

Scanned by and searchable text developed by Jim Artlip (VHS1960)

Copyright © 2012 Jim Artlip, all rights reserved

This file provided free to users for private, non-commercial use only







Introducing . . .



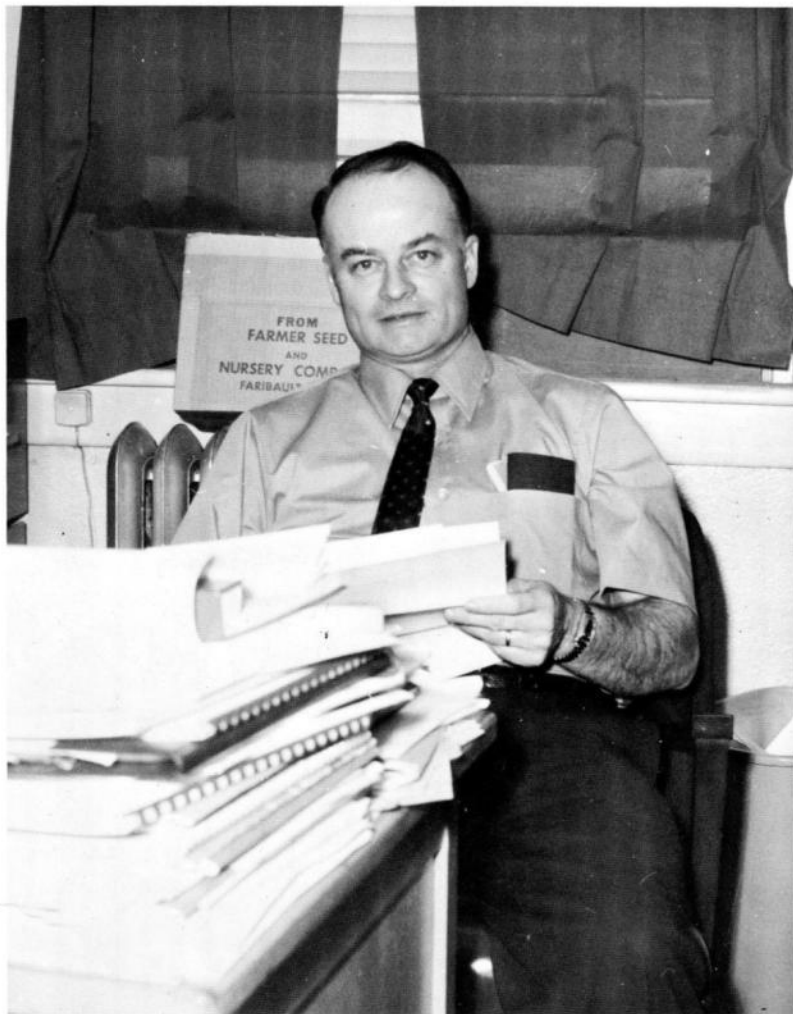
The 1970 Bluejay
Villisca Community High School
Villisca, Iowa
Volume XLV

Foreword



Man has trod farther from his primeval environment than any other species, in a relatively short period of time. This rapid development is basically the result of each succeeding generation handing down to its own all the accumulated knowledge and skill acquired bit by bit since the beginning. In this manner man has ventured from the shadows of his cave to the fringe of celestial space, and in this fashion man has opened the doors of the unknown and challenged present and future generations with man's greatest adventure. It was with this mind that Dr. Brian wrote, "Man's left hand is his dreamer hand; the right his doer hand. The future needs people who dream, it also needs people who do. But most of all it needs people who both dream and do. Education's obligation is to make the dreams real and deeds genuine."

Dedication



He has given his time, patience, and understanding to every student in VHS. The interest and cooperation he has shared with students and their problems are credits to his profession.

In addition to serving as guidance counselor, he has also been class sponsor.

With sincere appreciation, we dedicate the 1970 Bluejay to Mr. Dwight Lewis.

Administration



Mr. J. R. Henderson, Superintendent



Mr. Robert A. Baxter, Principal



SCHOOL BOARD—SEATED: Mr. Henderson, Pres. Tom Rusk, Sec. Roberta Dickey. STANDING: Willis Marvick, Gene Smith, Dean Sunderman, and Wendell Pollock.

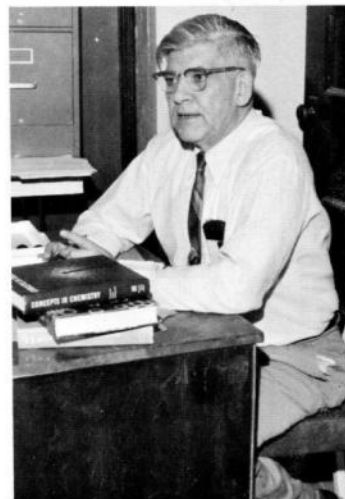
Faculty



MR. PAUL BARKER
Business Law
Bookkeeping
Shorthand
Secretarial Practice



MISS MARY BENNETT
Spanish
English 9



MR. WAYNE CHANEY
Physical Science
Senior Seminar
Chemistry

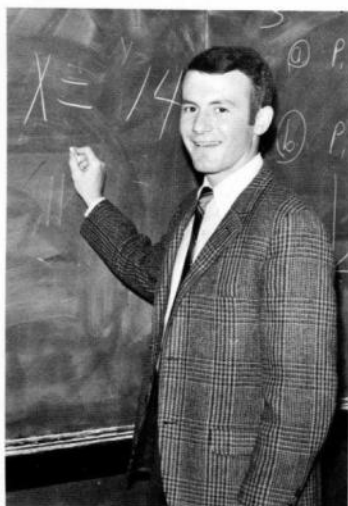


MR. DAVE ELSE
Molecular Biology
Biology
Head Football Coach
Assistant Basketball Coach
Track Coach



MR. ROBERT FELDMAN
Vocal Music





MR. GARY FOWLER
General Math
Algebra II



MR. JAKE GRASMICK
American Problems
Athletic Director
Boys' Basketball Coach



MR. LARRY HUMMEL
Industrial Arts
Drivers Education



MISS PAULA JENSEN
Sociology
Psychology
American History



MR. DWIGHT LEWIS
Guidance Counselor



MRS. JANICE LEWIS
Typing



MISS LINDA LONN
Art



MRS. RUTH MOORE
English 11 and 12
Journalism



MRS. RUTH PAULSEN
English 9
Librarian



MR. BILL SCOTT
Geometry
Senior Math
Algebra I
Girls Basketball Coach



MRS. KIM SMITH
Speech
English 10



MRS. SYLVIA SMITH
Home Economics
Family Living



MR. DALE SPENCER
Vocational Agriculture



MR. GAYLIN SUDIK
Band



MRS. LEONA WERTMAN
Physical Education



You guys really shouldn't have—
but I'm glad you did.



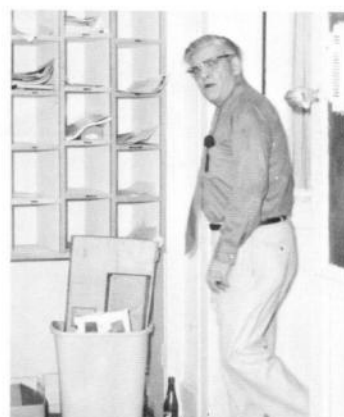
Hey Bill, I've got a cavity here.



I'm waiting.



Miss Jensen, Is this the real you?



What? People over 60 have their own
lounge?



I don't mind celebrating . . . as long as
it's for me.



Busy Day! Busy Day! Busy Day!

10: Personnel Cooks Secretaries Janitors BusDrivers Brannan,Irma Doan,Mildred Weaver,Edna Stackhouse,Evadna Grasmick,Loruss Greenfield,Carol Cooper,Jerry Zellmer,Alvin Northup,Paul Harris,Marvin Wirth,Don Lewis,Lawrence Feldman,Robert Kemery,John Buntsma,Bill Frazee,John Copelin,Joe Frazee,Lois Kraft,Carroll Buntsma,Loretta Abbott,Gladys Cooper,Jerry

Personnel



COOKS: Mrs. Robert Brannan, Mrs. Glenn Doan, Mrs. Harry Weaver, Mrs. Clyde Stackhouse.



LORUSS GRASMICK
Superintendent's Secretary



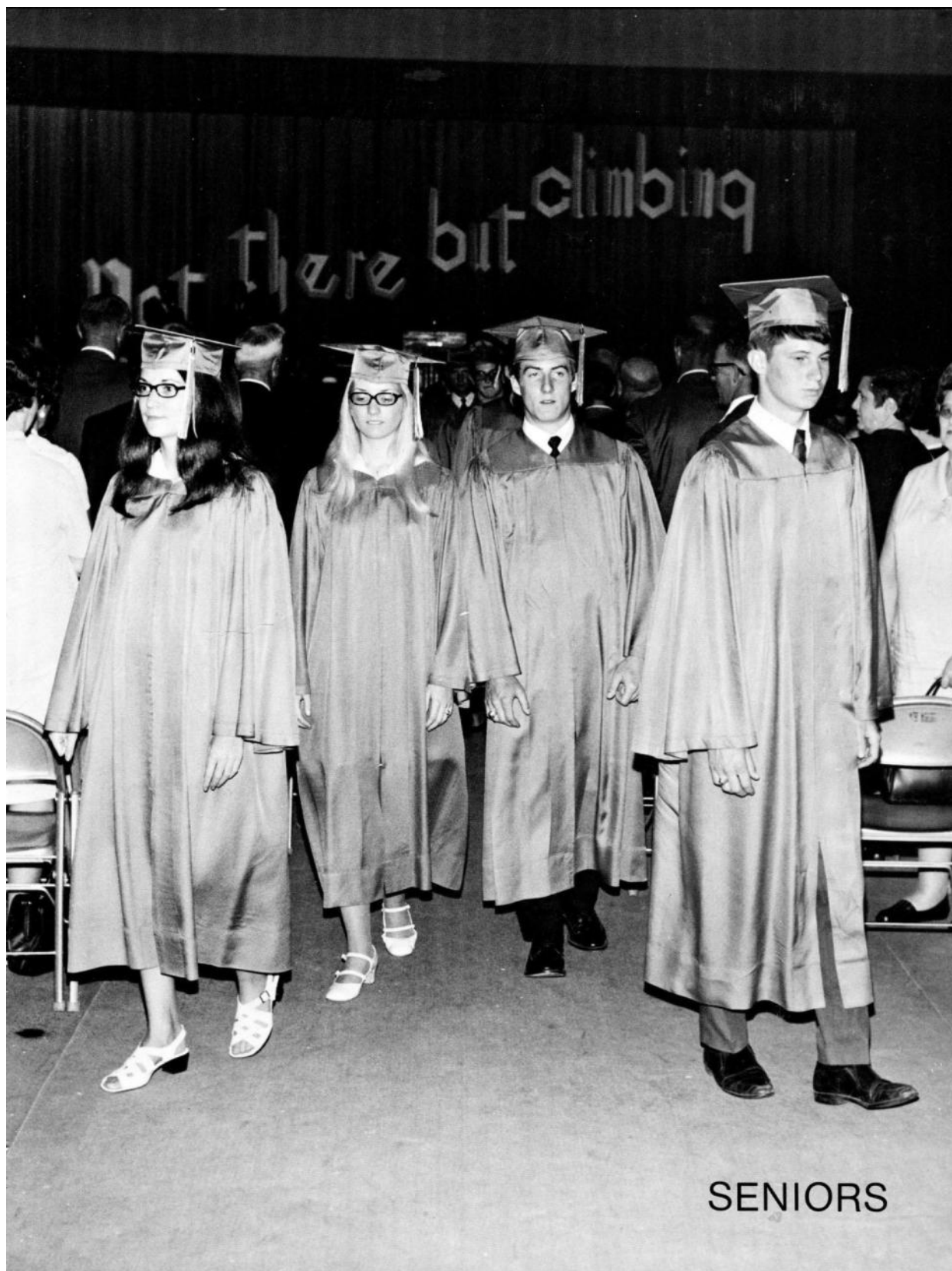
CAROL GREENFIELD
Principal's Secretary

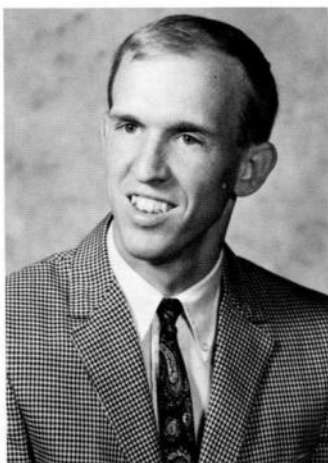


JANITORS: Jerry Cooper, Alvin Zellmer, Paul Northup, Marvin Harris.



BUS DRIVERS: Don Wirth, Lawrence Lewis, Robert Feldman, John Kemery, Bill Buntsma, John Frazee, Joe Copelin, Lois Frazee, Carroll Kraft, Loretta Buntsma, Gladys Abbott, Jerry Cooper.



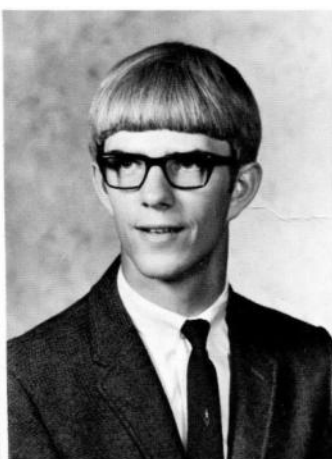
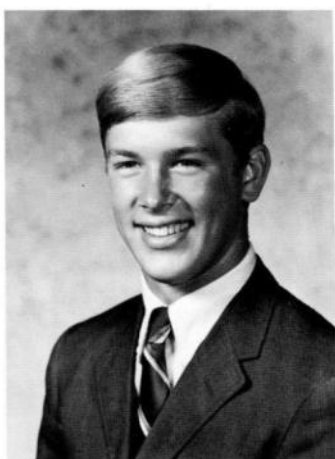


MR. DAVE ELSE, SPONSOR



MR. DWIGHT LEWIS, SPONSOR

DOUG FAST "He may lose his heart, but never his head." Class Officer: President 1,4; Student Council 1,4; FFA 1, 2,3,4, Treasurer 3, Vice-President 4; Football 1,2,3,4; Letterman's Club 2, 3,4; Math Club 2,3, 4, President 3; Science Club 4; Teen Haven Board 2.

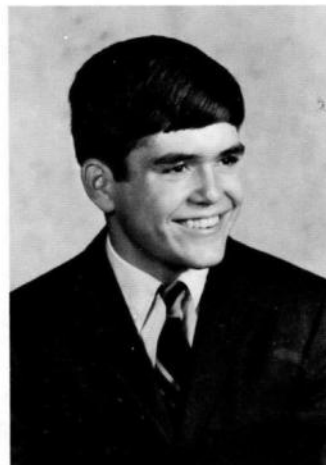


STANLEY DUNN "Who, me?" Class Officer: Vice-President 4; Concert Band 1,2; Marching Band 1,2,3; Chorus Little All-State 2; Chorus 1,2; Boys Glee 1,2; Drama Club 3,4; Thespians 3,4; All-School Play 3; FCA 2,3,4, Vice-President 4; Football 1,2,3,4; Track 1,2,3, 4; Baseball 1,2,3,4; Basketball 1,2,3,4; Letterman's Club 1, 2,3,4, Vice-President 4; Math Club 2,3; Spanish Club 1.



PAT ANDERSON "Bright and happy, short and snappy." Class Officer: Vice-President 1, Treasurer 2, Secretary 4; Chorus Little All-State 2,3,4; Chorus 1,2,3,4; Girls Glee 1,2,3,4; Y-Teens 1,2,3,4; Cabinet 1,2,3,4, Vice-President 3, President 4; Drama Club 3,4, Secretary 4; Thespians 3,4; All-School Play 3; Musical Review 3,4; Spanish Club 1,2,3,4, Treasurer 2, President 3; Cheerleading 2; FFA Sweetheart 4; Homecoming Candidate 4.

DENNIS RUCKER "I can resist anything except temptation." Class Officer; Treasurer 4; Drama Club 3,4, Treasurer 4; Thespian 3,4; All-School Play 3; FFA 1,2,3,4; Officer 3,4; Football 2; Math Club 2; Science Club 4.



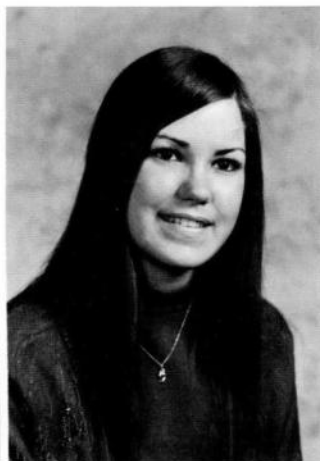


KEN ANDERSON "Knowledge comes but wisdom lingers." Concert Band 1,2,3,4; Marching Band 1,2,3,4; Band Little All-State 4; Cross Country 2,3,4; Baseball 1,2,3,4; Basketball 1,2,3,4; Letterman's Club 2,3,4; Math Club 3; Science Club 4; Spanish Club 2.

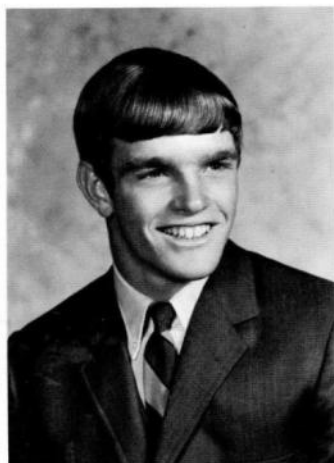


TOM BALDWIN "Some people are strange but I take the cake."

MERRI BANGSTON "Late hours are bad for one but nice for two." Chorus 1; Girls Glee 1; Y-Teens 1,2,3,4; Drama Club 3; Musical Review 3,4; Teen Haven Board 1; Annual Staff 3; Volcano 3,4; Cheerleading 1,2; Spanish 1; Librarian's Club 3,4.



SHARON BEEDLE "I'm a man-hater, but the Bible says love your enemies." Concert Band 1,2,3,4; Marching Band 1,2,3,4; Band Little All-State 4; Chorus 1; Girls Glee 1; Y-Teens 1,2,3,4; Cabinet 1; Drama Club 1,2,3; Musical Review 3; Science Club 3,4.



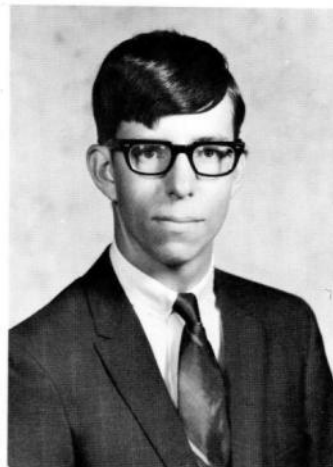
BILL BOGGESS "The word 'impossible' is not in my vocabulary." Concert Band 1,2; Marching 1,2,3; Chorus 1; FFA 1,2; FCA 2,3,4; Treasurer 4; Football 1,2,3,4; Track 1,2,3; Baseball 1,2,3; Basketball 1,2,3,4; Letterman's Club 2,3,4; President 4; Science Club 3; Math Club 1,2.

ELAINE BOGGESS "There's a little bit of mischief in every good girl." Concert Band 1,2,3,4; Marching Band 1,2,3,4; Band Little All-State 4; Science Club 2,3,4; Secretary-Treasurer 3; Vice-President 4; Volcano Staff 4; Chorus 1; Girls Glee 1; Y-Teens 1,2,3,4; Drama Club 4.



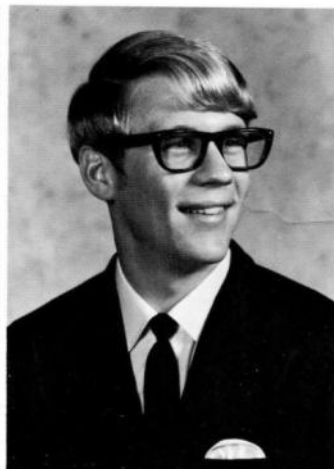


CHARM BROWN "It matters not how long we live but how." Class Officer; Secretary 2; Concert Band 1,2,3,4; Marching Band 1,2,3,4; Band Council 3; Band Little All-State 4; Chorus 1; Girls Glee 1; Y-Teens 1,2,3,4; Cabinet 3,4; Drama Club 4; Science Club 4.

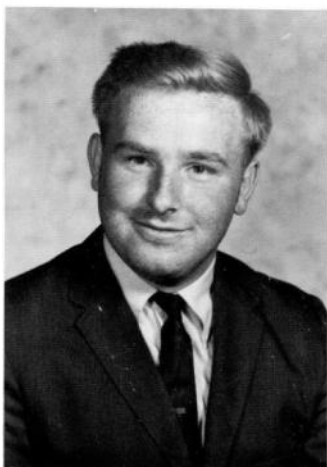


STAN BROWNLEE "Don't look at me. I didn't do it." Concert Band 1,2,3,4; Marching Band 1,2,3,4; Drum Major 4; Stage Band 1,2,3,4; Band Little All-State 4; Chorus 1; Boys Glee 1; Musical Review 3,4; FFA 1,2,3,4.

MARILYN CLARK
"I make the most of all that comes, and the least of all that goes." Y-Teens 1,2,3.



RANDY CLARK
"Tomorrow the world." Student Council 4; Vice-President 4; Chorus Little All-State 4; Chorus 1,2,4; President 4; Boys Glee 2; Musical Review 4; FFA 1,2,3,4; Reporter 4; Cross Country 2.



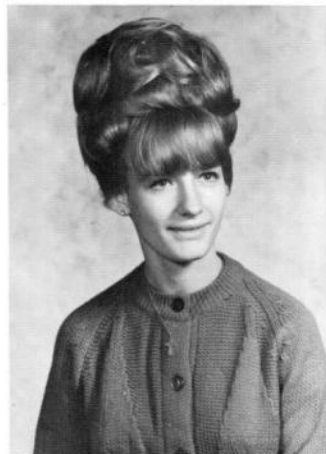
RUSSEL CURRIN "The less I learn, the less I have to remember." FFA 4; Janitor 2.



DONNIE DRESSER "Dat's okay!!" FFA 4.

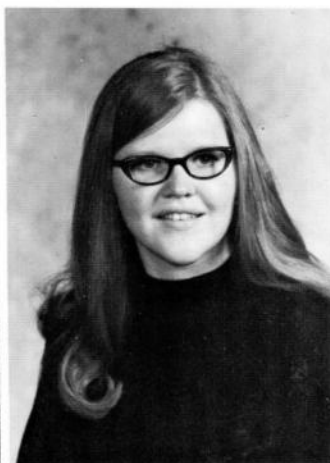


KINNEY DICKEY "Life's just one darned thing after another." Student Council 4; Secretary 4; Concert Band 1,2,3,4; Marching Band 1,2,3,4; Stage Band 1,2,3,4; SWI Honor Band 3; Band Little All-State 4; Chorus 1; Girls Glee 1; Y-Teens 1,2,3,4; Cabinet 2; Drama Club 1, 2,3,4; Musical Review 3,4; Letterman's Club 4; Science Club 3; Annual Staff 2,3,4; Editor 4; Volcano Staff 3; Band Queen Candidate 4; Track Queen Candidate 2,3; Cheerleading 2,3,4.

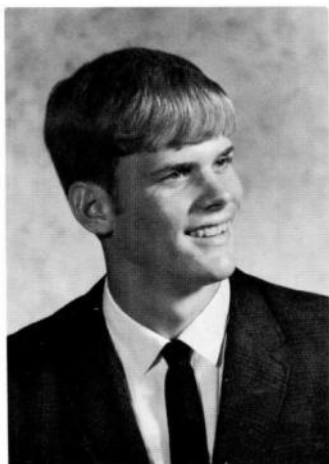


BUNNY DUKES "With a diamond on her finger and lots of gladness in her heart." Y-Teens 1,2,3,4; Track 1,2; Basketball 1; Letterman's Club 1,2.

DIRK DUNN "The truly great are often misunderstood." Class Officer 2,3; President 2,3; Student Council 2,3; Treasurer 2, Vice President 3; Football 1,2,3,4; Baseball 1,2,3,4; Basketball 1,2,3,4; Letterman's Club 2,3,4; Vice President 3; Math Club 2; Teen Haven Board 1; Spanish Club 1.

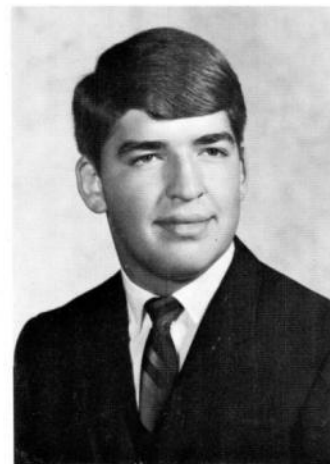


JINI FAST "A human song to the tune of a giggle." Transfer; Y-Teens 3,4; Cabinet 4; Drama Club 4.



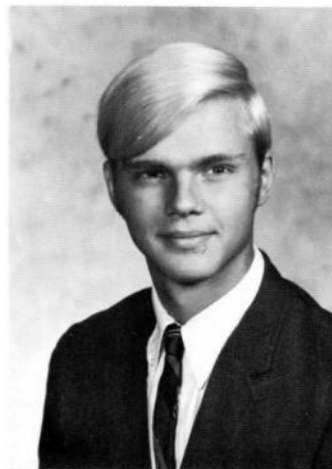
GALE FENGEL "Give me a push—my battery's dead." Chorus 1,2; Boys Glee 2; FCA 2,3,4; Football 1,2,3,4; Track 1,2,3,4; Basketball 1, 2,3,4; Letterman's Club 2,3,4; Annual Staff 3, 4; Volcano Staff 3; Spanish Club 1.

LYLE FREY "I swing to the beat of a different drummer—myself." Concert Band 1,2,3,4; Stage Band 1,2,3,4; Marching Band 1,2,3,4; Band Little All-State 4; Chorus 1; Boys Glee 1; All-School Play 3; Musical Review 3,4; FFA 1, 2,3,4; Reporter 4; FCA 3,4; Football 1,2,3,4; Letterman's Club 3,4; Math Club 2,3.





KENNY GAGE "I've got a general idea; now what do I do with it?" FFA 1,2,3,4; Sentinel 4.



ROD GETTING "Most is won when most is dead." Drama Club 3,4; FCA 3; Football 1,2,3; Track 1,2; Letterman's Club 3; Transfer.

VICKI GEYER
"The days are too short for all the thoughts I want to think." Chorus 1; Girls Glee 1,2; Section Representative 2; Y-Teens 1,2,3,4; Cabinet 3; Secretary 3; Drama Club 1; Cheerleading 2; Spanish Club 2,3; Secretary 3.



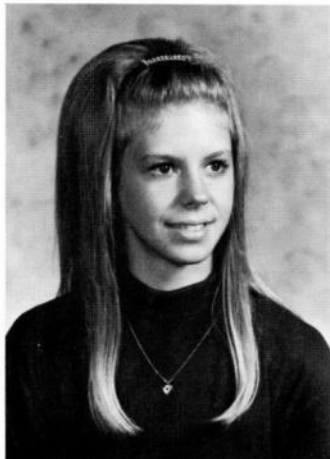
SHERRY GILLESPIE "Her asset poise; her hobby boys." Concert Band 1,2,3,4; Stage Band 1,2,3,4; Marching Band 1,2,3,4; Band Little All-State 4; Chorus 1,4; Girls Glee 1,4; Swing Choir 4; Chorus Little All-State 4; Y-Teens 1,2,3,4; Drama Club 2,3,4; Musical Review 3,4; Golf 4; Teen Haven Board 3; Secretary 3; Annual Staff 3; Volcano Staff 3,4; Band Queen Candidate 3.



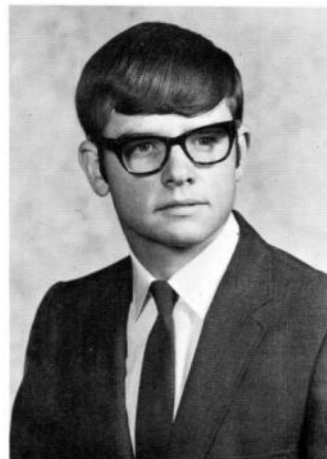
DENISE GOURLEY "How many days until Friday night?" Concert Band 1,2,3,4; Stage Band 1,2,3,4; Marching Band 1,2,3,4; Chorus 1; Girls Glee 1; Y-Teens 1,2,3,4; Drama Club 1,2,3; Musical Review 3,4; Annual Staff 3; Volcano Staff 3; Office Secretary 4; Spanish Club 1.



CONNIE GRAY "Without going, you get nowhere." Y-Teens 1,2,3,4.



JANICE GRAY "If silence were golden, she'd go bankrupt." Chorus 2; Girls Glee 2,4; Y-Teens 1,2,3,4; Track 1,2; Softball 3; Basketball 1,2,3,4; Letterman's Club 1,2,3,4; Librarian's Club 4.



MIKE GRAY "If you never get into mischief, you miss a lot of fun." FFA 1; Football 1,2,3; Baseball 1.

ALICE GRIFFITH

"I don't care how you spell my last name—I plan to change it anyway." Chorus Little All-State 4; Chorus 1,3,4; Girls Glee 1,2,3,4; File Clerk 3; Section Leader 4; Swing Choir 4; Y-Teens 1,2,3,4; Cabinet 4; Drama Club 3,4; Thespians 3,4; Musical Review 3,4; Track 1,2; Basketball 1; Letterman's Club 2; Science Club 2; Teen Haven Board 2,4; Treasurer 2,4; Annual Staff 3,4; Volcano Staff 3,4; FFA Sweetheart Candidate 4; Office Secretary 4; Spanish Club 1.



DEBBIE GUNDERMAN

"Dates are my favorite fruit." Class Officer: Vice-President 3; Student Council 3,4; Secretary 3; Concert Band 1,2,3,4; Marching Band 1,2,3,4; SWI Honor Band 3; Band Little All-State 4; Chorus 1; Girls Glee 1; Y-Teens 1,2,3,4; Cabinet 3; Drama Club 1,2,3,4; Clerk 4; Thespians 3,4; Musical Review 3; Letterman's Club 4; Band Queen Candidate 4; Track Queen Candidate 1; Homecoming Queen Candidate 4; Cheerleading 1,2,3,4; Office Secretary 3,4; Spanish Club 1.



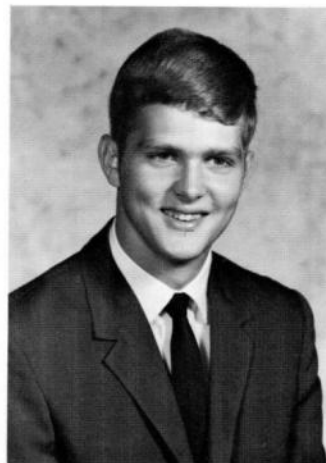
MARI GAY GUSTAFSON "She has a good time having a good time." Concert Band 1,2,3; Stage Band 2; Marching Band 1,2,3; Chorus 1,2; Girls Glee 1,2; Y-Teens 1,2,3,4; Drama Club 2; Annual Staff 3; Volcano Staff 3.

CHRIS HAUSEN "It's whatcha do with whatcha got." Chorus Little All-State 3,4; Chorus 1,2,3,4; Girls Glee 1,2,3,4; President 3; File Clerk 4; Y-Teens 1,2,3,4; Drama Club 2,3; Musical Review 3,4; Letterman's Club 4; Annual Staff 3; Volcano Staff 3; FFA Sweetheart Candidate 4; Cheerleading 2,4; Spanish Club 1,2,3,4; President 4.





RANDY JACKSON "One hour a day to study, one hour a day to eat, two hours to think how tired I am, and twenty hours to sleep." FFA 1,2,3,4; Sentinel 3; Secretary 4; Football 3; Math Club 1,2,3,4; Vice-President 4; Science Club 3,4; Spanish Club 1.

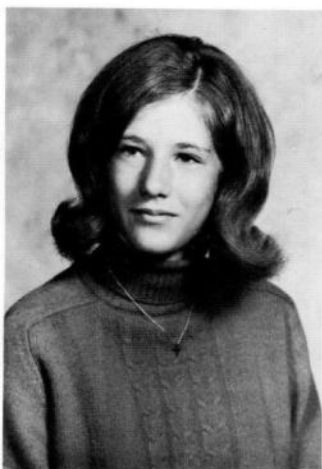


ED JOHNSON "The harder I try the gooder to be, the worser I get." Chorus Little All-State 3,4; Chorus 2,3,4; Section Leader 3; Boys Glee 2; Musical Review 3,4; Track 2; Letterman's Club 3,4.

MARCIA JOHNSON "A girl of cheerful yesterdays and confident tomorrows." Concert Band 1,2,3,4; Stage Band 1,2,3,4; Marching Band 1,2,3,4; Chorus Little All-State 3,4; Chorus 1,2,3,4; Section Leader 3; Girls Glee 1,2,3,4; Section Leader 4; Y-Teens 1,2,3,4; Cabinet 4; Drama Club 1,2,3; Musical Review 3,4; Softball 2; Basketball 1,2; Basketball Manager 3,4; Annual Staff 3,4; Volcano Staff 3,4; Swing Choir 4.

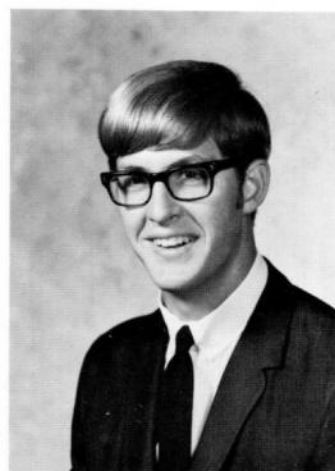


STEVE KERNEN "I LOVE school—closed!" Chorus 1,2; Boys Glee 2; FFA 1,2,3,4.



SHERYL KERR "When I'm sad, I sing. When I'm glad, I sing. I love to sing." Chorus Little All-State 3,4; Chorus 1,2,3,4; Officer 3; Girls Glee 1,2,3,4; Officer 4; Y-Teens 1,2,3,4; Drama Club 4; All-School Play 3; Musical Review 3,4; Softball 1,2,3; Basketball 1,2; Letterman's Club 3; Office Secretary 3; Spanish Club 1,2; Swing Choir 4.

ROGER KRAFT "If I had it to do over again, I still wouldn't work." Chorus 4; Boys Glee 4; Musical Review 4; FFA 1; FCA 2; Football 1,2,3; Track 1,2,3,4; Letterman's Club 1,2,3,4.



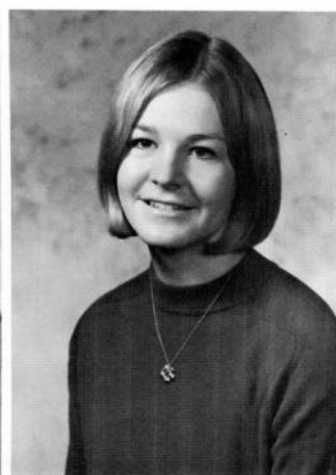


ALICE LEWIS "To study or not to study—that is the question." Y-Teens 1,2,3,4; Librarian's Club 3,4.



DANNY LINDBERG "Man was not made to hurry." Transfer; FFA 3,4; Football 3.

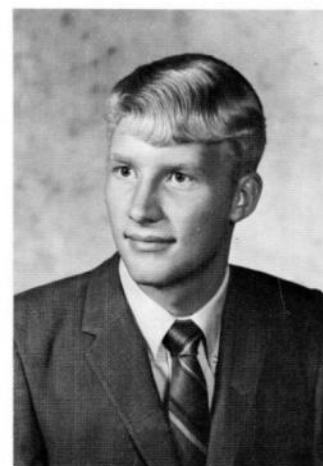
LORNA LONG "A bashful girl, but willing to learn." Chorus Little-All-State 4; Chorus 1,4; Girls Glee 1,2,3,4; Swing Choir 4; Y-Teens 1,2,3,4; Cabinet 3,4; Musical Review 3,4; Science Club 4; Librarians's Club 2,3,4.



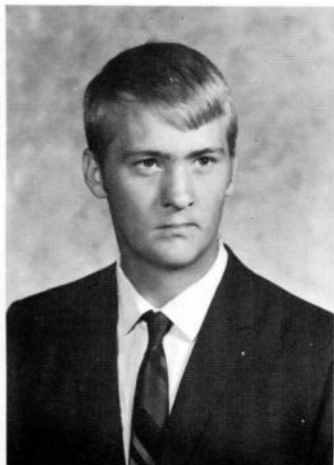
LINDA LOVIG "Win without boasting; lose without excuse." Class Officer: Secretary 3; Concert Band 1,2,3,4; Marching 1,2,3,4; Council 1,4; President 4; Band Little All-State 4; Chorus 1; Girls Glee 1; Y-Teens 1,2,3,4; Drama Club 1,2,3,4; Secretary 3; Science Club 3,4; Secretary-Treasurer 4; Band Queen Candidate 3,4; FFA Sweetheart Candidate 4.



MIKE LOWE "Life begins at 3:45." FFA 1,2; FCA 3,4; Football 1,2,3,4; Track 1,2,3,4; Math Club 1,2,3,4.



JIM LUCAS "Beware the fury of a silent man." Chorus Little All-State 4; Chorus 1,2,4; Boys Glee 2; Musical Review 4; Cross Country 2.



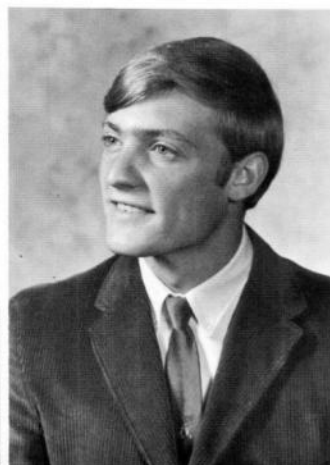
TOM MARSH "To insure peace of mind, always ignore the rules and regulations." FFA 3; FCA 2; Football 1,2; Math Club 1,2,3,4; Science Club 3; Spanish Club 1,2.



JOHN MEANS "He thinks too much. Such men are dangerous." FFA 1,2; Math Club 1,2,3,4; President 4.

JACK MULLER

"It is the man of mischief who keeps the world alive." Concert Band 1,2,3,4; Stage Band 1,2,3,4; Marching Band 1,2,3,4; SWI Honor Band 4; Band Little All-State 4; Drama Club 4; Thespians 4; All-School Play 3; Musical Review 3,4; FCA 3,4; Football 1,3,4; Track 1,2; Golf 3; Basketball Manager 2,3; Letterman's Club 3,4; Science Club 1,2,3,4; Historian 3; President 4.

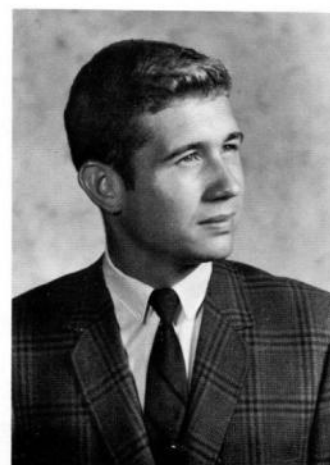


RANDY NASH "If fate means you to lose, give him a good fight anyway." Student Council 3; Chorus Little All-State 2; Chorus 1,2; Boys Glee 1,2; FFA 1,2,4; FCA 3,4; Football 3.



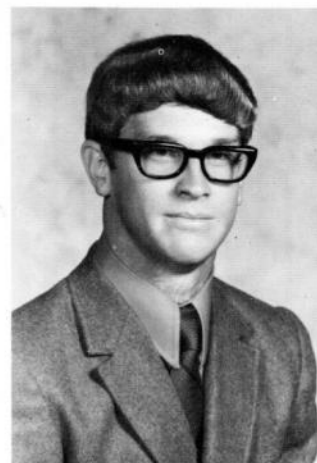
LARRY NORTHRUP "I want to be bashful, but the girls won't let me." Chorus 1,2; Boys Glee 1; Football 1,3; Track 1,2,3,4; Cross Country 2.

RICK O'ROURKE "He rattles on, just like his cars." Chorus 1,2; Boys Glee 1,2; FCA 2,3,4; Track 1,2,3,4; Cross Country 1,2,3,4; Letterman's Club 1,2,3,4; Science Club 3.



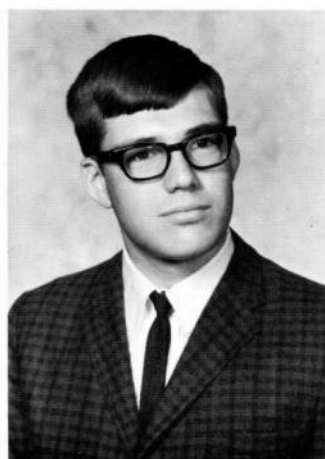
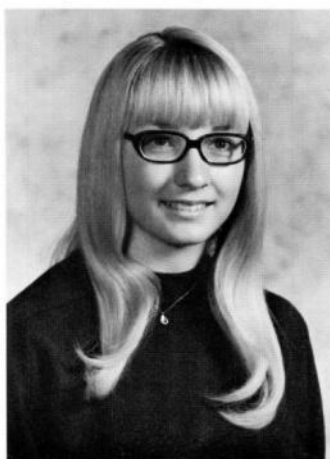


PEG PETERSON "Always laughing, never sad; sometimes ornery, never bad." Concert Band 1,2,3,4; Marching Band 1,2,3,4; Council 4; Band Little All-State 4; Chorus 1,2,3,4; Secretary-Treasurer 4; Girls Glee 1,2; Swing Choir 4; Chorus Little All-State 2,3,4; Y-Teens 1,2,3,4; Drama Club 1,2,3,4; All School Play 3; Musical Review 3,4; Golf 3,4; Annual Staff 3,4; Volcano Staff 3,4; Editor 4.

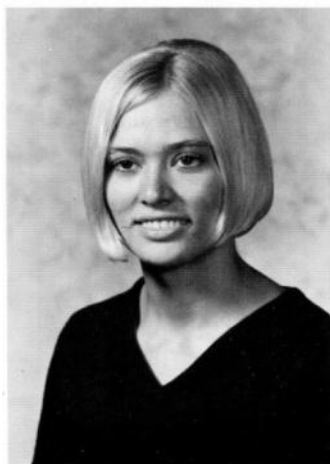


LARRY RANEY "I'd rather argue with a thousand men than with ONE woman." Class Officer: Vice President 1; Chorus 1; Drama Club 1,2,3,4; Secretary 2; FFA 1,2,3,4; Secretary 3; President 4; Football 1,2,3,4; Basketball 1; Letterman's Club 3,4; Teen Haven Board 4; Annual Staff 2.

SANDY ROBERTS "Full of pep and nonsense too; does what she's not expected to." Class Officer: Secretary 1; Treasurer 3; Student Council 2,3; Chorus Little All-State 3,4; Chorus 1,2,3,4; Secretary-Treasurer 3; Girls Glee 1,2,3,4; Y-Teens 1,2,3,4; Cabinet 4; Drama Club 3,4; Musical Review 3,4; Science Club 3,4; Homecoming Queen Candidate 4; FFA Sweetheart 4.



JIM RUSSELL "I love work; I can sit and stare at it for hours." Chorus Little All-State 3,4; Chorus 1,2,3,4; Boys Glee 2; Musical Review 3,4; FFA 1,2,3; Football 1,2,3; Track 1,2,3,4; Letterman's Club 4; Volcano 4.



CAROL SCHREMSER "Not by might, not by power, but by my spirit." Y-Teens 3,4; Thespians 4; Drama Club 4; All-School Play 3; Track 3; Basketball 3; Transfer.



CAROLE SHAVER "I'm not bashful, you just don't know me." Chorus 1,2; Girls Glee 1,2; Y-Teens 1,2,3,4; Librarian's Club 3,4; President

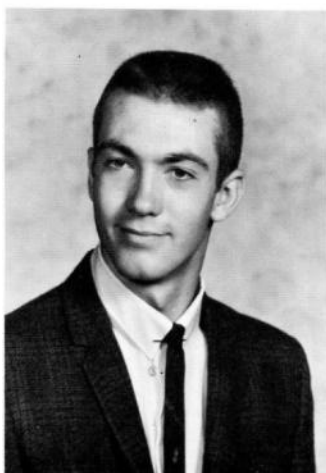


MIKE SKAHILL "My wit is thine." Drama 2, 3,4; Thespians 4; All-School Play 3; FFA 1,2, 3,4; Football 2; Baseball 1; Basketball 1,4.

JERI SMITH "It's nice to be natural, if you're naturally nice." Chorus 1; Girls Glee 1; Y-Teens 1,2,3,4; Track 3; Basketball 1,2,3,4; Letterman's Club 3,4; Annual Staff 3; Volcano Staff 3,4; Office Secretary 2.



CAROL SPRAGUE "A student with one objective; it is not yet to be discovered." Student Council 1; Chorus 1; Girls 1; Y-Teens 1,2,3,4; Drama 1,2,3; All-School Play 3; Track 1; Basketball 1,2; Letterman's Club 2; Office Secretary 3; Librarian's Club 3.



HOWARD STEPHENS "Behold! I am here!" Chorus Little All-State 3; Chorus 3,4; Section Leader 3; Drama Club 2,3; All School Play 3; Musical Review 3,4; FFA 1,2,3,4; FCA 1,2,3; Football 1,2,3,4; Track 1,2,3,4; Baseball 1,2; Basketball 1,2,3; Letterman's Club 3,4; Math Club 1,2; Science Club 2,3,4.

JOYCE STRAND "A diamond is like a tourniquet. It shuts off my circulation." Girls Glee 4; Y-Teens 1,2,3,4; Musical Review 4; Librarian's Club 2,3,4.



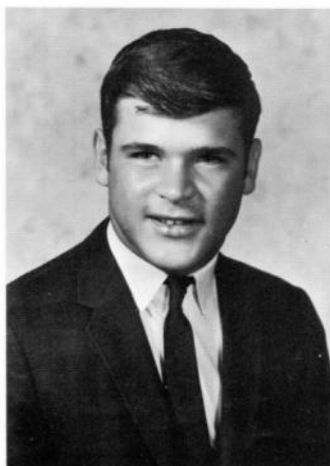


DIANA STUBBS "Lead her not into temptation—just show her the way." Girls Glee 2; Y-Teens 2,3,4; Librarian's Club 4.



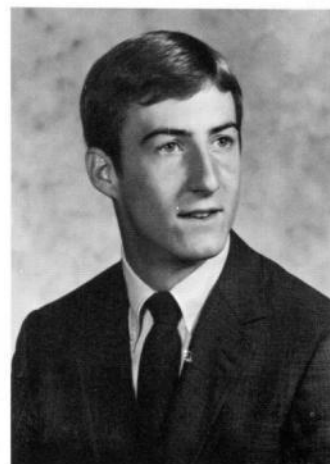
BETTY SUNDERMAN "What next—The Queen of England?" Concert Band 1,2,3,4; Stage Band 1,2,3,4; Marching Band 1,2,3,4; Council 2; SWI Band 3; Band Little All-State 4; Y-Teens 1,2,3,4; Drama Club 2,3,4; Thespians 3,4; Musical Review 3,4; Letterman's Club 4; Office Secretary 3,4; Cheerleading 1,2,3,4; Head Cheerleader 3,4; Track Queen Candidate 3; Band Queen 4; Homecoming Queen 4.

ROY TAYLOR "Just an accident looking for a place to happen." Chorus little All-State 3,4; Chorus 1,2,3,4; Vice-President 3; Boys Glee 2; Musical Review 3,4.



BILL WAGNER "Never put off until tomorrow what you can put off until the day after that." Concert 1,2; Marching Band 1,2; Football 3,4; Track 2; Letterman's Club 2,3,4; Science Club 3,4; Spanish Club 1.

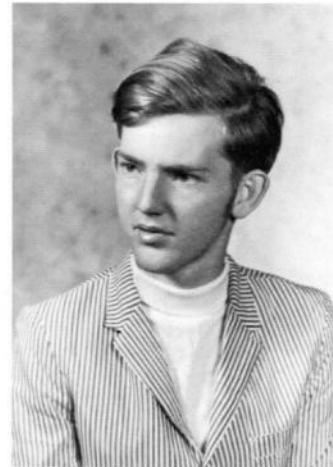
NORM WEAVER "Where there's a will, there's a way; and when there's a way, I will." Student Council 4; President 4; Chorus Little All-State 2; Chorus 1,2; Vice-President 2; Boys Glee 1,2; Drama Club 1,2,3,4; Vice-President 3; President 4; Thespians 3,4; All-School Play 2,3; Musical Review 3; FCA 2,3,4; Bulletin Chairman 2,3; Captain 4; Football 1,2,3,4; Basketball 2; Letterman's Club 3,4; Teen Haven Board 3; Vice-President 3; Boys State.





TOM WHEELER

"I came, I saw, I left." Football 3;
Math Club 4.



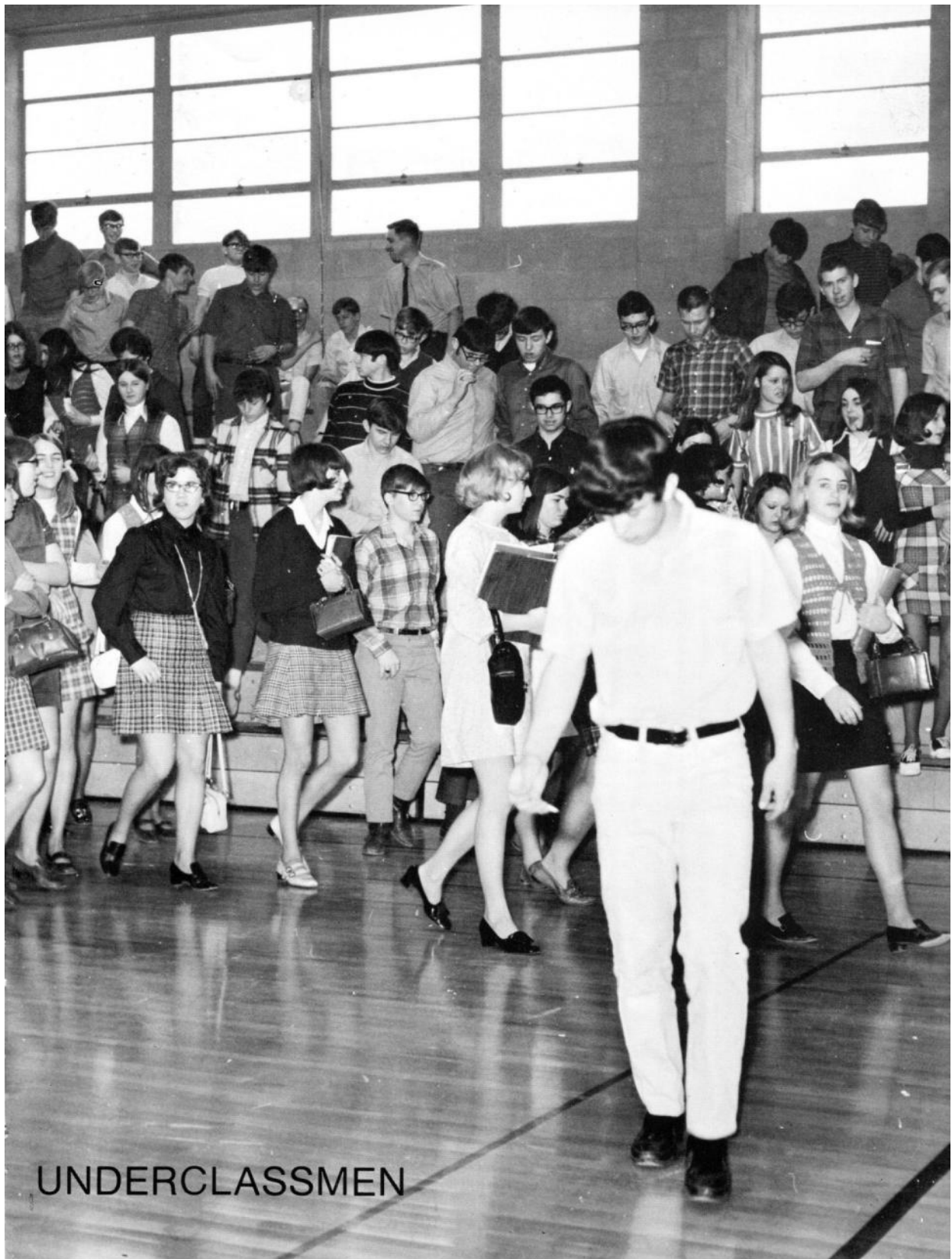
STEVE WILLIAMSON (Transfer)

"Confusion's MASTERPIECE."
Volcano Staff 4.



NORMA WILSON

"One who, when she has the choice
of two evils, chooses both." Y-
Teens 1,2,3,4; Softball 1,2,3; Let-
terman's Club 2,3,4.



UNDERCLASSMEN

26: Juniors JuniorClass Sudik, Gaylin Hummel, Larry Bangston, Martha Beedle, Doug Bowling, Susie Core, Jane Core, Joan Courcier, Jim Danielson, Denny Darnold, Denny Eifert, Gary English, Pam Everett, James Fast, Debbie Figgins, Felicia Focht, Kathy Garey, Sandy Goettsch, Jeanette Gray, Lee Haley, Karen Harris, Lynn Henderson, Diane Hunter, Michael Jacobs, Peggy Kerr, Connie Knoke, Pat

19 Juniors 71



Mr. Sudik
Mr. Hummel



Martha Bangston
Doug Beedle
Susie Bowling
Jane Core
Joan Core
Jim Courcier



Denny Danielson
Denny Darnold
Gary Eifert
Pam English
James Everett
Debbie Fast



Felicia Figgins
Kathy Focht
Sandy Garey
Jeanette Goettsch
Lee Gray
Karen Haley



Lynn Harris
Diane Henderson
Michael Hunter
Peggy Jacobs
Connie Kerr
Pat Knoke

27: Juniors JuniorClass Lindberg,Linda Lyle,LouAnn McAlpin,Jon McClelland,Joni McClelland,Judy McConnell,Dennis McCoy,Nancy Marsh,Larry Marsh,Susan Maxell,Ann Perry,Mary Peterman,Stan Quinn,Kathy Rhamy,Karla Ridenour,Marcia Saikaly,Elie Schrader,Janet Scott,Kathy Shipley,Tom Simmons,Larry Skahill,Susan Smith,Jackie Smith,Keith Sparks,Cheryl Strain,Jeanette Ward,Jan Thompson,Terry Williams,Jerry

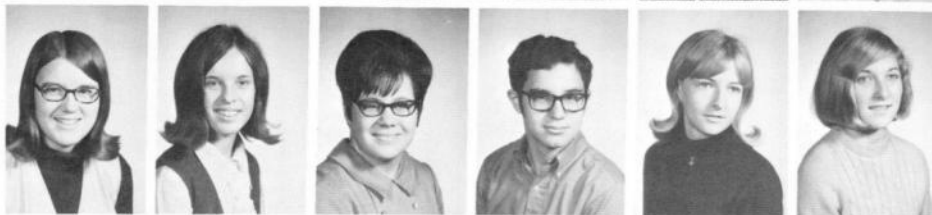
Linda Lindberg
Luanne Lyle
Jon McAlpin
Joni McClelland
Judy McClelland
Dennis McConnell



Nancy McCoy
Larry Marsh
Susan Marsh
Ann Maxell
Mari Perry
Stan Peterman



Kathy Quinn
Karla Rhamy
Marcia Ridenour
Elie Saikaly
Janet Schrader
Kathy Scott



Tom Shipley
Larry Simmons
Susan Skahill
Jackie Smith
Keith Smith
Cheryl Sparks



Jeanette Strain
Jan Ward
Terry Thompson
Jerry Williams





G-O-O-S-E! GooooOOSE!!



What did you say the recipe for this punch was?



Believe it or not, these things make my hair nice and straight.

Junior Candid



We don't care what you say Mr. Hummel, we're going to do it OUR way!



CLASS OFFICERS: Keith Smith, President; Pat Knoke, Vice President; Karen Haley, Secretary; Ann Maxell, Treasurer.



Don't look now but I think people are watching.



CHEERS!!



Knock it off, Kath! We know you're not that kind of girl.



Watch those pornographic pictures, Conni!



Poof . . . You're a pile of . . . !!



Show us how, Lynn.



I know I can! I know I can . . . I think I can? Well . . . I thought I could!



And you said he was intelligent?

30: Sophomores SophomoreClass Feldman,Robert Bangston,Brenda Bangston,Sheri Bashaw,Joel Beckett,Greg Fowler,Gary Bisbee,Dale Boggess,Dick Boggess,Mary Branan,Marilyn Carlson,Danny Doll,Galen Dunn,Shelley Eno,Mark Fengel,Michele Fitzwater,Steve Gourley,Debbie Gage,Karen Gourley,Rita Graham,Bob Gray,Terri Harris,Lana Hiltabidel,Barbara Jackson,Merrie Jergenson,LaDona Kasha,Henry King,Rick Knoke,Judy Lane,Susan Lehmkuhl,Laurie

19 SOPHOMORES 72



Mr. Feldman
Brenda Bangston
Sheri Bangston
Joel Bashaw
Greg Beckett
Mr. Fowler

Dale Bisbee
Dick Boggess
Mary Boggess
Marilyn Branan
Danny Carlson
Galen Doll

Shelley Dunn
Mark Eno
Michele Fengel
Steve Fitzwater
Debbie Gourley
Karen Gage

Rita Gourley
Bob Graham
Terri Gray
Lana Harris
Barbara Hiltabidel
Merrie Jackson

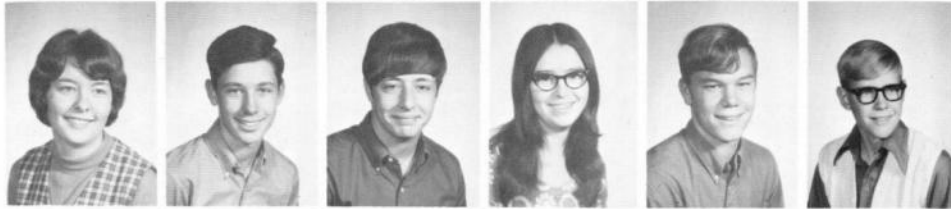
LaDona Jergenson
Henry Kasha
Rickey King
Judy Knoke
Susan Lane
Laurie Lehmkuhl

31: Sophomores SophomoreClass Long,Joyce Long,Karen Mack,Nora McAlpin,David McKinley,Lou Moates,Jolene Nelson,Julie Northup,Mike Parker,Mark Perry,Debbie Peterson,Fred Peterson,Neal Phillis,Linda Pollock,Tom Poore,Ruth Robinson,Larry Ross,Marty Russell,Steve Schafer,Marty Shearer,Rick Shipley,Charles Simmons,Rhonda Simpson,Roger Skahill,Mark Smith,Dwight Steffen,Eldonna Thompson,Beverly Wiechman,Doris Wilhelm,Judy Williams,Stuart Williamson,Sheryl Winther,Craig Wright,Peggy

Joyce Long
Karen Long
Nora Mack
David McAlpin
Lou McKinley
Jolene Moates



Julie Nelson
Mike Northup
Mark Parker
Debbie Perry
Fred Peterson
Neal Peterson



Linda Phillis
Tom Pollock
Ruth Poore
Larry Robinson
Marty Ross
Steve Russell



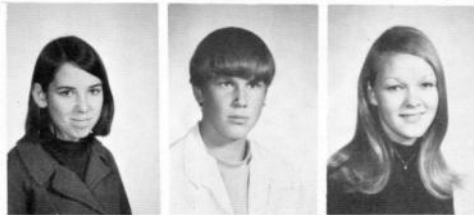
Marty Schafer
Rickie Shearer
Charles Shipley
Rhonda Simmons
Roger Simpson
Mark Skahill



Dwight Smith
Eldonna Steffen
Beverly Thompson
Doris Wiechman
Judy Wihelm
Stuart Williams

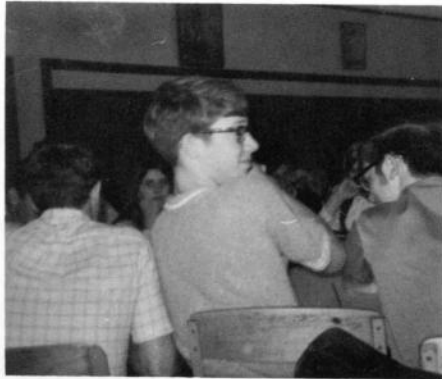


Sheryl Williamson
Craig Winther
Peggy Wright





Class Officers



"Quick! Give me the answer."



"Meet ya round the corner."



"Peace brother."



"This big???"



"I'd rather fight than switch!"



"It's got to be here some place."



"Me again??"



"And this is just the first night!"



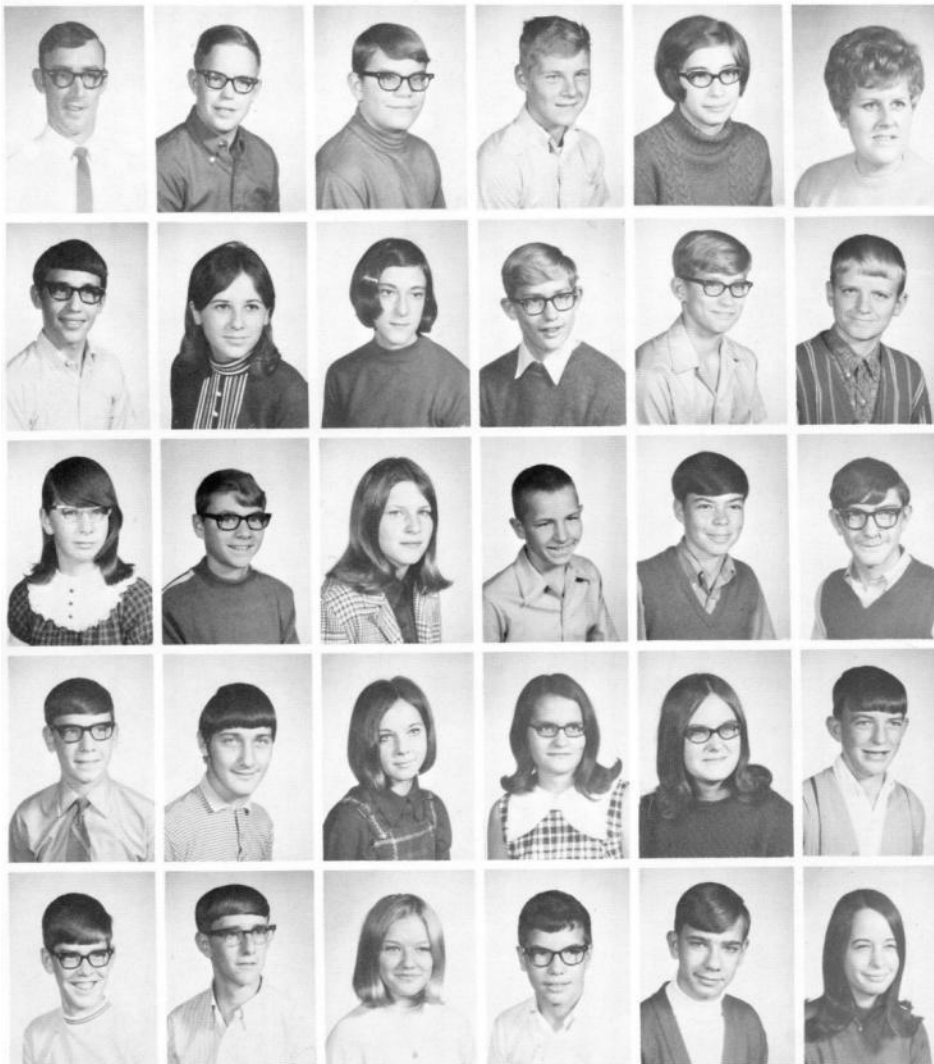
"What do you mean we can't do it my way?"



"One of these days I'll have to clean this out."

34: Freshmen FreshmanClass Scott,Bill Anderson,Carl Anderson,Phil Blank,Bob Brown,Starr Jensen,Paula Clark,Gary Cooper,Debbie Delehant,Candi Dicks,Alan Dicks,Arnold Dukes,Gary Eifert,Hazel Fitzwater,Skip Franson,Barbara Garey,Allen Gourley,Mike Gourley,Wendell Gray,Doug Gulick,Gene Gustafson,Sara Haley,Diane Hess,Elaine Jacobs,Ken Jergenson,Mike Johnson,Steve Kernen,Jacque Kernen,John Kleindienst,Ed Lewis,Carol

19 FRESHMEN 73



Mr. Scott
Carl Anderson
Phillip Anderson
Bobby Blank
Starr Brown
Miss Jensen

Gary Clark
Debbie Cooper
Kandi Delehant
Alan Dicks
Arnold Dicks
Gary Dukes

Hazel Eifert
Skip Fitzwater
Barbara Franson
Allen Garey
Mike Gourley
Wendell Gourley

Doug Gray
Gene Gulick
Sara Gustafson
Diane Haley
Elaine Hess
Kenneth Jacobs

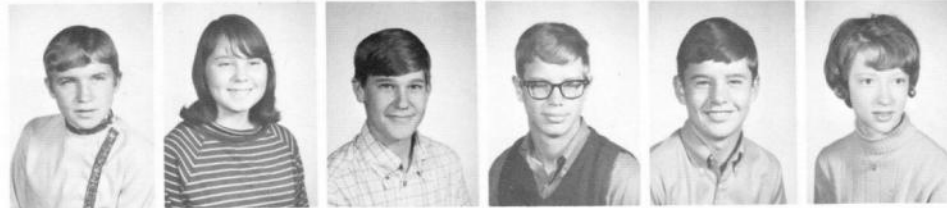
Mike Jergenson
Steve Johnson
Jacque Kernen
John Kern
Ed Kleindienst
Carol Lewis

35: Freshmen FreshmanClass Lovig,Lori McKinley,Teresa Marsh,Linda Maxwell,Dallas Moates,Vicki Muller,Jim O'Rourke,Kim O'Rourke,Tammy Peterson,Jim Raney,Mark Rhamy,David Roberts,Marsha Rucker,Jill Rupp,Debbie Scanlan,Steve Schafer,Anne Scott,Carla Shipley,Clifford Skahill,David Smith,Connie Smith,DennisE. Smith,Jim Sprague,Kenny Stalder,Gloria Steward,Donna Strand,Jona Strand,Robin Sunderman,Byron Sunderman,Chuck Thomas,Dorothy Watts,Bob Weaver,Jeff Wilson,SteveT. Yeske,John

Laureen Lovig
Teresa McKinley
Linda Marsh
Dallas Maxwell
Vicki Moates
Jim Muller



Kim O'Rourke
Tammy O'Rourke
Jim Peterson
Mark Raney
David Rhamy
Marsha Roberts



Jill Rucker
Debbie Rupp
Steve Scanlan
Anne Schafer
Karla Scott
Clifford Shipley



Dave Skahill
Connie Smith
Dennis Smith
Jim Smith
Kenny Sprague
Gloria Stalder



Donna Steward
Jona Strand
Robin Strand
Byron Sunderman
Chuck Sunderman
Dorothy Thomas



Bobby Watts
Jeff Weaver
Steve Wilson
John Yeske





Class Officers



"That's where the good part starts!"



"Time Out!"



"Rush Hour!"



"Watch it there!"



"1-2-3-Ugh!"



"Boy, that was a good one!"



"Look at those muscles!"



"Guess what? The teacher's gone!"



"That's the way to tell him!"



"Oh, no!!" P. E., again!"



"You aren't that shy, are you?"





Student Council



Norm Weaver, Mark Eno, Elie Saikaly, Judy Knoke, Diane Haley, Doug Fast, Pat Knoke, Jim Peterson, Kinney Dickey, Randy Clark, Mrs. Kim Smith, sponsor. Debbie Gunderman, Not Pictured.

The Student Council this year has been under the able leadership of Norm Weaver and Randy Clark. Some of the accomplishments this year were a Student Forum, addition of coat racks for the students' use, revision of the dress code, and a Student Lounge for the seniors' use. The Student-Faculty Advisory Board is a group comprised of Student Council members and Miss Paula Jensen and Mr. Robert Feldman, Faculty members. Their job is to help the administration with decisions on the dress code.



OFFICERS: Pat Knoke, Treasurer; Randy Clark, Vice-President; Norm Weaver, President; Kinney Dickey, Secretary.



Advisory Board

41: TeenHaven Shipley, Tom McCoy, Nancy Franson, Barbara Griffith, Alice Raney, Larry Lane, Susan Peterson, Neal Sunderman, Chuck McConnell, Raymond Fowler, Gary Haley, Delores Williams, Corrine Beckett, Dick Pollock, Barb Harris, Carolyn Kernen, Kenneth Watts, Bob

Teen Haven Council



TEEN HAVEN OFFICERS: Tom Shipley, President; Nancy McCoy, Vice-President; Barb Franson, Secretary; Alice Griffith, Treasurer. Other members are Larry Raney, Susie Lane, Neal Peterson, Chuck Sunderman.

MEMBERS OF THE ADULT BOARD: President, Raymond McConnell; Student Advisor, Gary Fowler; Delores Haley, Corrine Williams. Not pictured are Dick Beckett Barb Pollock, Carolyn Harris, Kenneth Kernen, Bob Watts.



During one of the serious meetings?!

Volcano Staff



The Volcano staff worked hard this year to meet their deadlines and to have the school paper out by the first of every month.



Originality was one of the paper's chief assets this year.

Annual Staff



The 69-70 Annual Staff consisted of four seniors, 3 juniors, 2 sophomores and one freshman, all working hard to meet this year's deadlines.



Working one night a week throughout the school year, the 1970 Bluejay was assembled. We've enjoyed working on it and hope you'll enjoy each and every page.

44: Y-Teens Anderson, Pat Bangston, Martha Jensen, Paula Focht, Kathy Knoke, Pat Fast, Jini Roberts, Sandy Griffith, Alice Bangston, Brenda Long, Lorna Johnson, Marcia Maxell, Ann Jacobs, Peggy Scott, Kathy Fast, Debbie Marsh, Susan Brown, Charm Knoke, Judy Lehmkuhl, Laurie Franson, Barbara Marsh, Linda

Y-Teens



CABINET—FRONT ROW: Pat Anderson, President; Martha Bangston, Vice-President; Miss Paula Jensen, Sponsor; Kathy Focht, Secretary; Pat Knoke, Treasurer. SECOND ROW: Jini Fast, Sandy Roberts, Alice Griffith, Brenda Bangston, Lorna Long. THIRD ROW: Marcia Johnson, Ann Maxell, Peggy Jacobs, Kathy Scott, Debbie Fast, Susan Marsh. FOURTH ROW: Charm Brown, Judy Knoke, Laurie Lehmkuhl, Barb Franson, Linda Marsh.



Y-Teen
Activities Throughout the Year



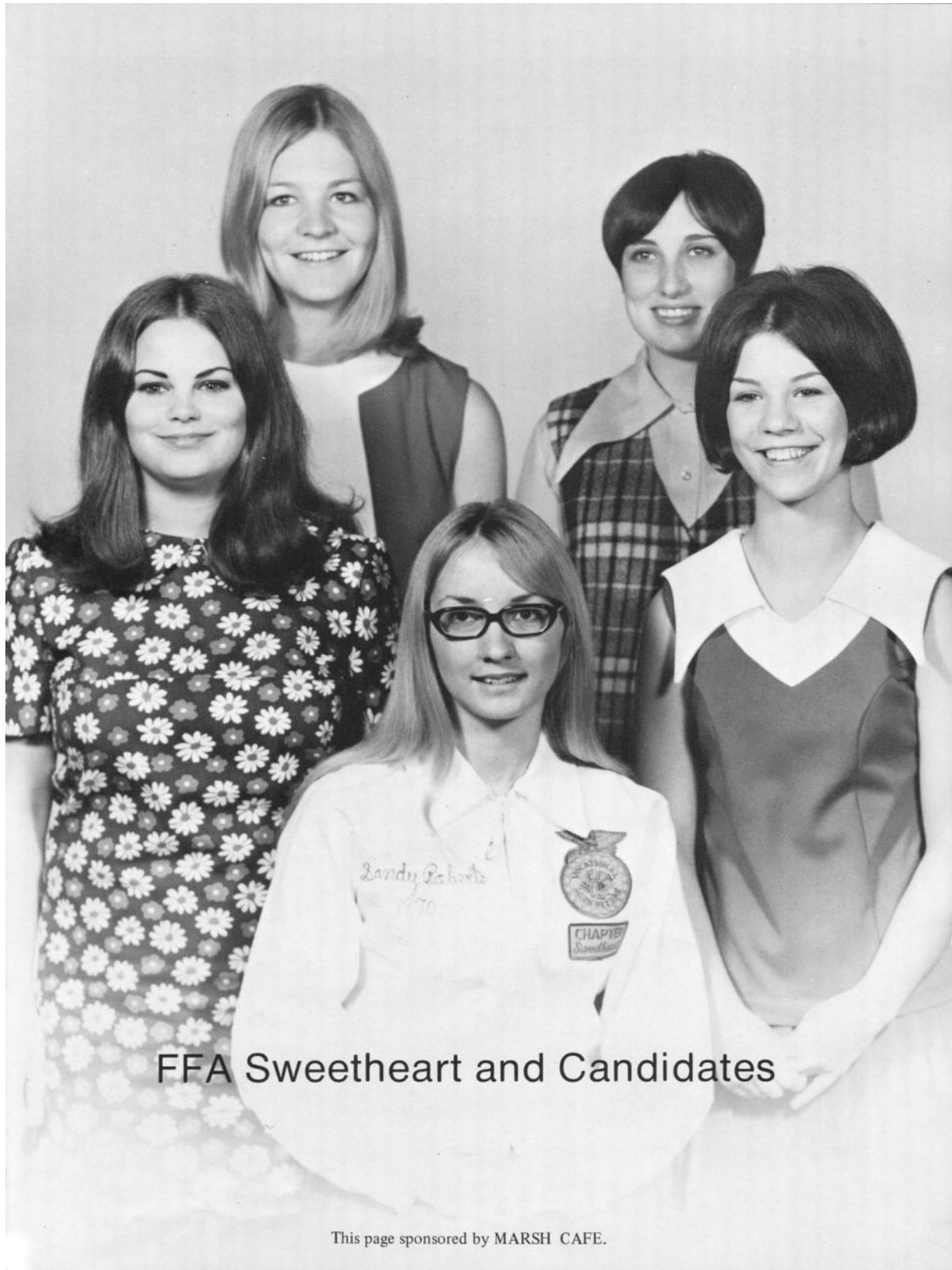
1970 Miss Y-Teen



Miss Charm Brown was named Miss Y-Teen at the annual Twerp Dance. She was chosen for her outstanding work during her membership in Y-Teens. Other candidates also showed outstanding work while in Y-Teens.



CANDIDATES AND ESCORTS: Charm Brown, Jim Lucas, Marcia Johnson, Mike Lowe, Lorna Long, and Gaylin Goodvin.



FFA Sweetheart and Candidates

This page sponsored by MARSH CAFE.

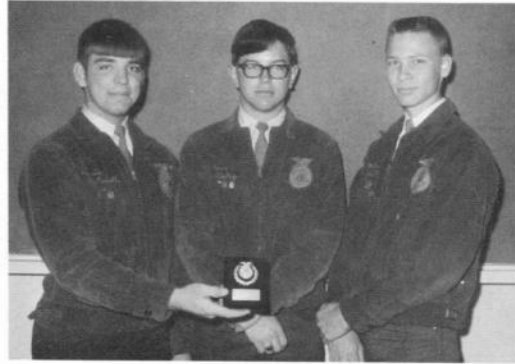


OFFICERS—FRONT ROW: Lyle Frey, Reporter; Doug Fast, Vice President; Larry Raney, President; Randy Jackson, Secretary; Keith Smith, Treasurer. BACK ROW: Dale Spencer, Advisor; Randy Clark, Reporter; Tom Shipley, Sentinel; Dennis Rucker, Parliamentarian.





Annual FFA Banquet



Program of Work Award



FFA honors outstanding citizens of the community.



Spanish Club



FRONT: Chris Hausen, President; Tom Pollock, Vice-President; Stuart Williams, Treasurer; Lauren Lovig, Secretary.

Librarians Club



SEATED: Judy Knoke, Treasurer; Karla Rhamy, Secretary; Peg Wright, Vice-president; Carole Shaver, President; Mrs. Ruth Paulsen, Sponsor.

Math Club



FRONT: John Means, President; Debbie Fast, Secretary; Randy Jackson, Vice-president. STANDING: Mr. Bill Scott, Sponsor.

Science Club



FRONT: Mr. Wayne Chaney, Sponsor; Linda Lovig, Secretary-Treasurer; Elaine Boggess, Vice-president; Elie Saikaly, Historian; Jack Muller, President.



Drama Society



Thespians

53: DramaCouncil Thespian Anderson,Pat Rucker,Dennis Griffith,Alice Sunderman,Betty Dunn,Stan Muller,Jack Weaver,Norman Focht,Kathy Schremser,Carol Kerr,Connie Knoke,Pat



DRAMA COUNCIL—FRONT ROW: Pat Anderson, Dennis Rucker, Alice Griffith, Betty Sunderman. BACK ROW: Stan Dunn, Jack Muller, Norm Weaver, Kathy Focht, Carol Schremser, Conni Kerr, Pat Knoke.



Thespian Initiation.

Letterman's Club



OFFICERS—CENTER FRONT ROW: Bill Boggess, President; Martha Bangston, Secretary-Treasurer; Stan Dunn, Vice President.



OFFICERS—CENTER: Stan Dunn, Vice-Captain; Norm Weaver, Captain.

55: StudentSecretaries Sunderman,Betty Harris,Lynn Garey,Sandy Quinn,Kathy Gourley,Denise Bangston,Brenda Lyle,LouAnn McCoy,Nancy Bowling,Susie Maxell,Ann Fast,Debbie Hausen,Chris Bangston,Sheri Wright,Peggy Strain,Jeanette Sprague,Carol Wilson,Norma Smith,Jeri Griffith,Alice Lindberg,Linda Harris,Lana Gunderman,Debbie Peterson,Peggy

Student Secretaries

ATHLETIC OFFICE: Betty Sunderman and Lynn Harris.



ADMINISTRATION: Sandy Garey, Kathy Quinn, Denise Gourley, Brenda Bangston, Luanne Lyle, Nancy McCoy, Susie Bowling, Ann Maxell, Debbie Fast.



FACULTY—SEATED: Luanne Lyle, Chris Hausen, Sheri Bangston, Peg Wright, Jeanette Strain. STANDING: Carol Sprague, Norma Wilson, Jeri Smith, Alice Griffith, Linda Lindberg, Lana Harris, Debbie Gunderman, Peg Peterson.

Chorus



The VHS Chorus this year consisted of 52 members. Their performances included concerts at Christmas, spring and the Honors Concert, with the highlight of the year as the Musical Revue.

Girls Glee



The Girls Glee received a I at State Large Group Contest at Lewis Central in the spring. The Mixed Chorus received a II. Small Group Contest was held at Oakland with Susan Marsh and Kathy Focht's solos receiving I ratings.

57: Music,Vocal SwingChoir Anderson,Pat Peterson,Peggy Kerr,Sheryl Russell,Jim Clark,Randy Lucas,Jim Kerr,Connie Knoke,Pat Long,Lorna Bashaw,Joel Maxwell,Dallas Fitzwater,Skip Skahill,David Maxell,Ann Gillespie,Sherry Johnson,Marcia Gray,Doug Jacobs,Ken Skahill,Mark Roberts,Sandy Griffith,Alice Schrader,Janet Marsh,Susan Focht,Kathy Hausen,Chris Taylor,Roy Johnson,Ed Pollock,Tom

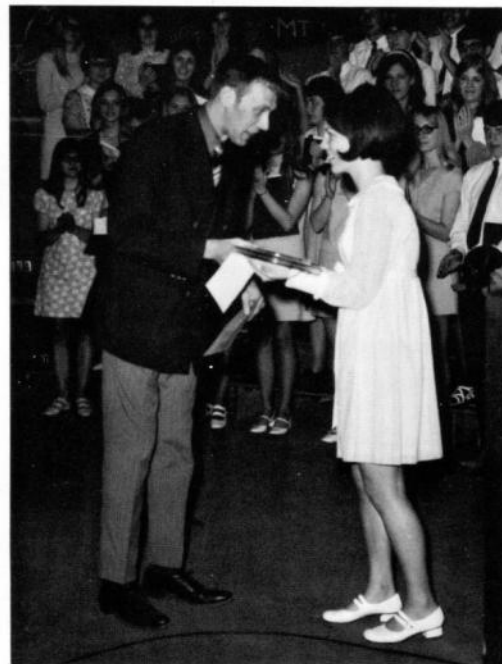
Swing Choir



FOURTH ROW: Peg Peterson, Sheryl Kerr, Jim Russell, Randy Clark, Jim Lucus, Connie Kerr, Pat Knoke. THIRD ROW: Lorna Long, Joel Bashaw, Dallas Maxwell, Skip Fitzwater, David Skahill, Ann Maxell. SECOND ROW: Sherry Gillespie, Marcia Johnson, Doug Gray, Kenny Jacobs, Mark Skahill, Sandy Roberts, Alice Griffith. FIRST ROW: Janet Schrader, Susan Marsh, Kathy Focht, Pat Anderson, Chris Hausen, Not Pictured Roy Taylor, Ed Johnson, Tom Pollock.



Glee and Chorus Council.



Outstanding Vocal Musician, Pat Anderson.



MUSICAL REVUE





Band



Concert Band



Stage Band



Marching Band had a very successful year as they received I's at both Iowa and Nebraska state contest. They also got first in Class B at Mt. Ayr Band Day and Clarinda Band Day.

61: Music Band Lovig,Linda Peterson,Peggy Lyle,LouAnn Sudik,Gaylin Pollock,Tom Clark,Gary Brownlee,Stan Muller,Jack Gunderman,Debbie Brownlee,Stan



BAND COUNCIL: Linda Lovig, president; Peg Peterson, senior; Luanne Lyle, junior; Mr. Gaylin Sudik, director; Tom Pollock, sophomore; Gary Clark, freshman; and Stan Brownlee, drum major.



OUTSTANDING BANDSMEN: Jack Muller, Debbie Gunderman, Stan Brownlee.

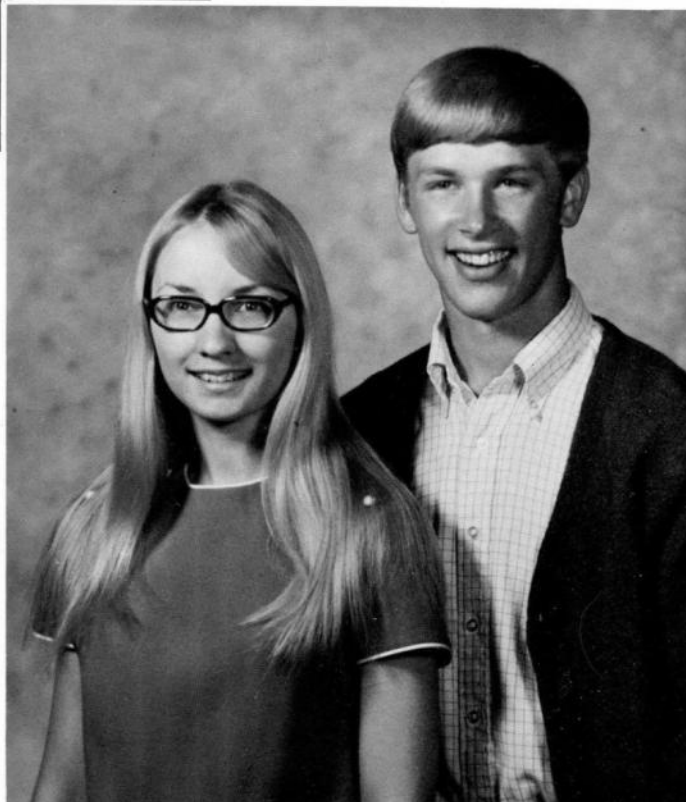


Band Queen

Betty Sunderman was chosen this year to represent the Bluejay Marching Band. Betty and four other girls were nominated on the basis of beauty, poise, and personality. The other candidates were Kinney Dickey, Debbie Sunderman, Linda Lovig, and Lynn Harris. Betty represented VHS well by being second runner up at Mt. Ayr Band Day and finally reigning as queen of the Clarinda Band Jamboree, having been chosen over representatives from several other schools.

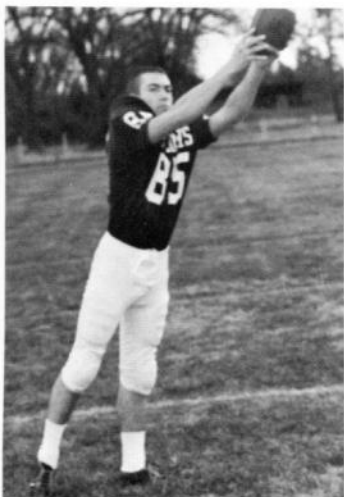
March of Dimes Queen & King

Sandy Roberts and Doug Fast represented Villisca High School as queen and king candidates at the March of Dimes dance held in Red Oak January 24. Road blocks, canisters, and blanket throws helped to bring in money.





SPORTS

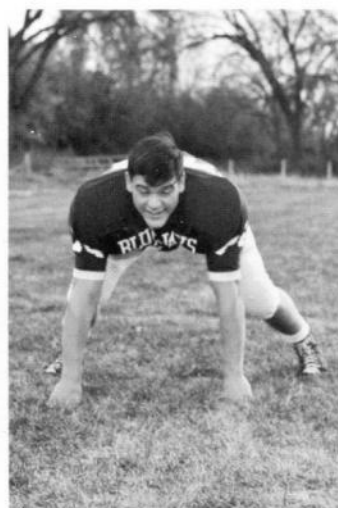


HOWARD STEPHENS
End



MIKE LOWE
Guard

BILL WAGNER
Tackle

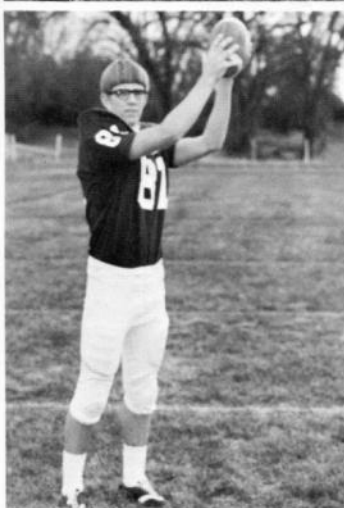


DICK BOGGESS
HB

LARRY MARSH
Tackle



LYLE FREY
Center

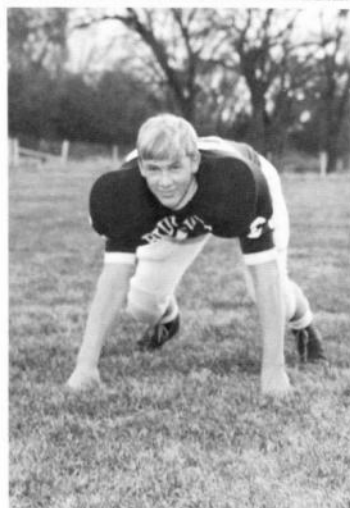


STAN DUNN
End

Foot

ball

JACK MULLER
Tackle



DOUG FAST
Guard

GALE FENGEL
HB



DIRK DUNN
HB

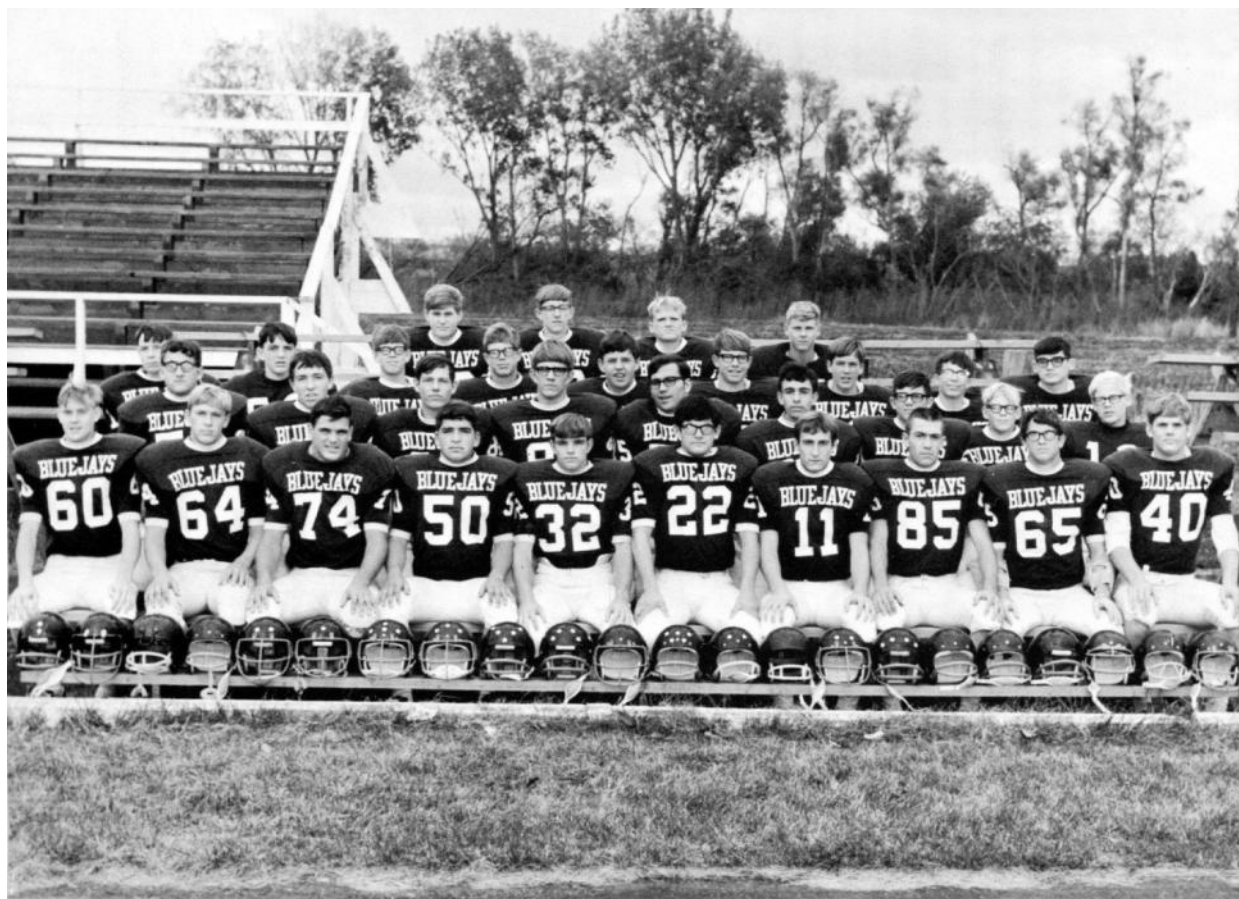
NORM WEAVER
QB

LARRY RANEY
Guard



BILL BOGGESS
HB



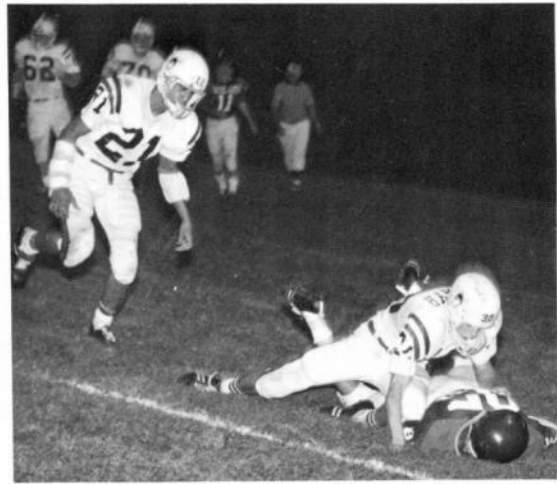


The football team of 1969 had to overcome the obstacle of many injuries during the season which caused the team to have a poorer record than was anticipated. Their season record was two wins and seven losses. Their conference record was two wins and three losses which was fourth place standing.

The Jays who made All-Conference team this year were Doug Fast, Bill Wagner, Lyle Frey, Larry Raney, Bill Boggess, and Stan Dunn. Dirk Dunn, Larry Marsh, and Norm Weaver were posted on Honorable Mention. On All-State Bill Wagner and Stan Dunn made Honorable Mention.

Games		
	Villisca	Opponents
Red Oak	20	21
Corning	6	22
East Union	28	2
Bedford	33	6
Mt. Ayr	6	26
Lenox	6	22
Greenfield	14	15
Clarinda	0	42
Avoha	0	52







Miss Betty Sunderman
1969 Homecoming Queen

This page sponsored by NODAWAY ELEVATOR.



PAT ANDERSON



KINNEY DICKEY



DEBBIE GUNDERMAN



SANDY ROBERTS



HOMECOMING —OCTOBER 3, 1969—







Betty Sunderman
Head Cheerleader



Ann Maxell



Varsity



Kathy Focht



Joyce Long



JR. VARSITY: Sheri Bangston,
Jaque Kernen, Debbie Gourley,
Lori Lovig, Susie Lane.



Cheerleaders



Jeanette Strain



Chris Hausen

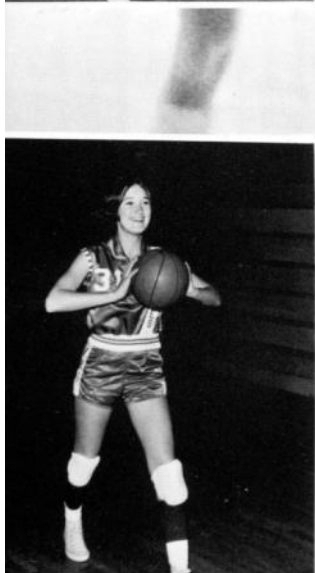
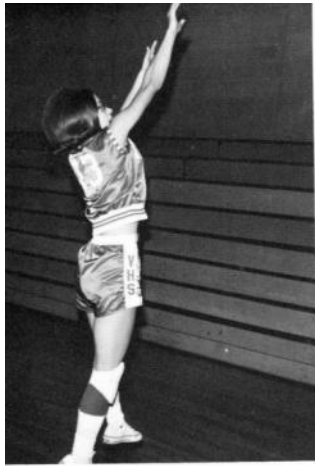


Kinney Dickey



Debbie Gunderman





75: Basketball, Girls Bangston, Martha Harris, Lana Kerr, Connie Haley, Karen Smith, Jeri Scott, Kathy Gray, Janice Dunn, Shelley McCoy, Nancy Knoke, Pat Fengel, Michele Smith, Jackie Johnson, Marcia Wright, Peggy Scott, Carla Delehant, Candi Wilhelm, Judy Haley, Diane Bangston, Brenda Lehmkuhl, Laurie Smith, Connie Hess, Elaine Long, Karen Schafer, Anne Franson, Barbara Gray, Terri

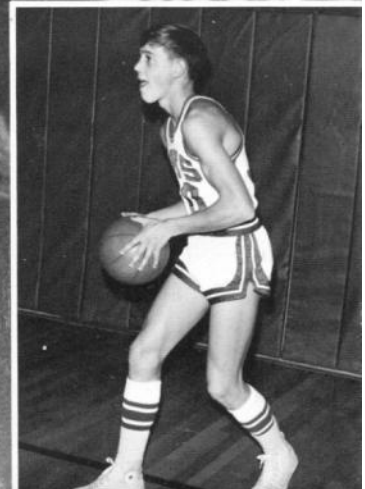
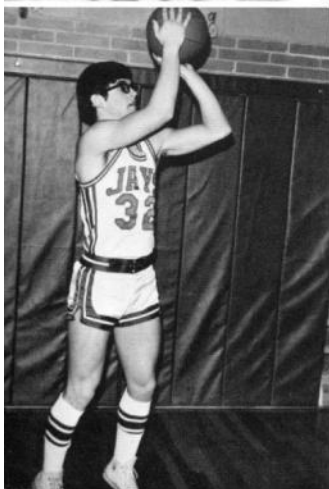
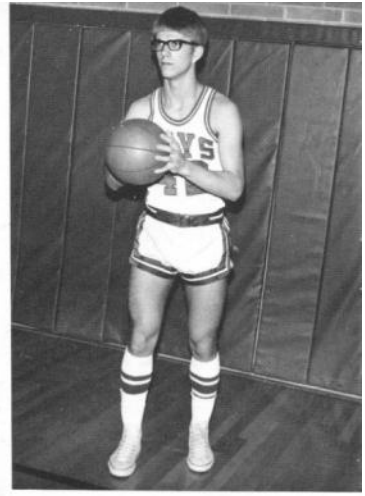


VARSITY—FRONT ROW: Martha Bangston, Lana Harris, Conni Kerr, Karen Haley, Jeri Smith, Kathy Scott. BACK ROW: Janice Gray, Shelley Dunn, Nancy McCoy, Pat Knoke, Michele Fengel, Jackie Smith, Marcia Johnson, Manager.

KATHY SCOTT, DISTRICT FREE THROW CHAMPION.



JUNIOR VARSITY—FRONT ROW: Peggy Wright, Carla Scott, Candi Delehant, Judy Wilhelm, Diane Haley, Brenda Bangston, Lauri Lehmkuhl. BACK ROW: Connie Smith, Elaine Hess, Karen Long, Ann Schafer, Barb Franson, Terri Gray.



77: Basketball, Boys Darnold, Denny McConnell, Dennis Smith, Keith Eno, Mark Graham, Bob Skahill, Mike Else, Dave Boggess, Bill Dunn, Dirk Fengel, Gale Peterman, Stan Dunn, Stan Anderson, Kenneth Grasmick, Jake Anderson, Carl Fitzwater, Skip Gourley, Mike Kernen, John Gourley, Wendell Scanlan, Steve Rhamy, David Skahill, David Jergenson, Mike Dukes, Gary Boggess, Dick McAlpin, David Smith, Dwight Graham, Bob Northup, Mike Eno, Mark Williams, Stuart Peterson, Neal Russell, Steve Schafer, Marty



VARSITY—FRONT ROW: Denny Darnold, Dennis McConnell, Keith Smith, Mark Eno, Bob Graham, and Mike Skahill. BACK ROW: Coach Dave Else, Bill Boggess, Dirk Dunn, Gale Fengel, Stan Peterman, Stan Dunn, Ken Anderson, and Coach Jake Grasmick.

This page sponsored by HOWARD'S CLOTHING AND SPORTING GOODS.



JR. VARSITY—FRONT ROW: Carl Anderson, Skip Fitzwater, Mike Gourley, John Kernen, Wendell Gourley, Steve Scanlan, Dave Rhamy, Dave Skahill, Mike Jergenson, Gary Dukes. BACK ROW: Dick Boggess, Dave McAlpin, Dwight Smith, Bob Graham, Mike Northup, Mark Eno, Stuart Williams, Neal Peterson, Steve Russell, Marty Schafer.

Track and Cross Country



1970 Track Squad



Rick O'Rourke—Cross Country winning effort at Clarinda



Good relay exchange for the Villisca Team

79: Track,Boys CrossCountry O'Rourke,Rick Kernen,John Skahill,Mark McAlpin,Jon Darnold,Denny Anderson,Kenneth Shearer,Rick Boggess,Bill



State distance Runners



1969 CROSS COUNTRY SQUAD: John Kernen, Mark Skahill, Jon McAlpin, Denny Darnold, Kenney Anderson, Rick Shearer, and State Champ, Rick O'Rourke.



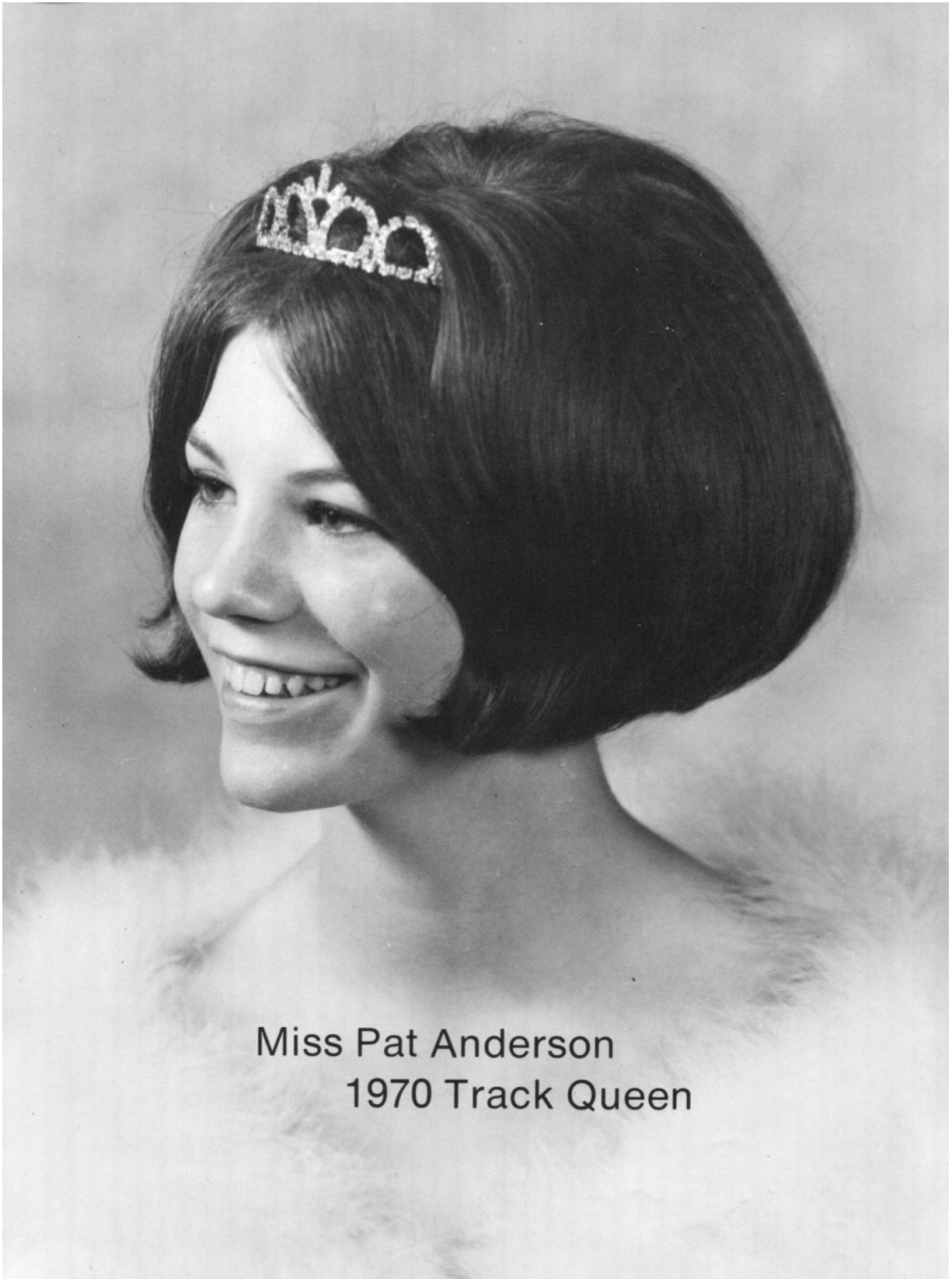
State Relay Team



A Winning Relay Effort



LONG JUMPER: Bill Boggess

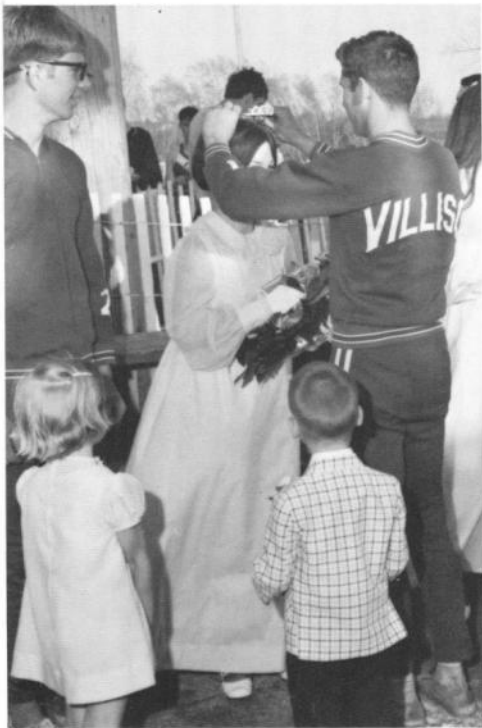


Miss Pat Anderson
1970 Track Queen

81: Track, Queen, Candidates Franson, Barbara Bangston, Brenda Focht, Kathy Anderson, Pat Sunderman, Betty Dickey, Kinney Harris, Lynn O'Rourke, Rick Brown, Chele (flowergirl) Sudik, David (crownbearer)



TRACK QUEEN CANDIDATES: Barb Franson, freshman; Brenda Bangston, sophomore; Kathy Focht, junior; Pat Anderson, senior; Betty Sunderman, senior; Kinney Dickey, senior; Lynn Harris, junior.



Pat Anderson receives her crown from Rick O'Rourke.



1970 Track Queen, Miss Pat Anderson and her escort Rick O'Rourke. Flower girl was Miss Chele Brown and Crownbearer was Master David Sudik.

82: Track, Girls Softball Smith, Jackie Scott, Kathy Long, Karen Smith, Jeri Scott, Bill Haley, Karen Schafer, Anne Knoke, Pat Fengel, Michele Haley, Diane Schenck, Sally Else, Vince Gray, Terri Grashorn, Becky Helton, Ruth

Girls' Track



FRONT ROW: Jackie Smith, Kathy Scott, Karen Long, Jeri Smith. SECOND ROW: Coach Bill Scott, Karen Haley, Anne Schaffer, Pat Knoke, Michele Fengel, Diane Haley.

Girls' Softball



FRONT ROW: Karen Long, Karen Haley, Pat Knoke, Kathy Haley, Sally Schenck. SECOND ROW: Clach Else, Terri Gray, Diane Haley, Kathy Scott, Becky Grasshorn, Ruth Helton.

83: Golf Fengel, Michele Lehmkuhl, Laurie Nelson, Julie Harris, Lynn Lane, Susan Lovig, Linda Harris, Lana Knoke, Judy Bangston, Martha Henderson, Diane Gourley, Denise Peterson, Peggy Gillespie, Sherry Knoke, Pat Eno, Mark Pollock, Tom Simpson, Roger Carlson, Danny Watts, Bob Schafer, Marty Darnold, Denny Anderson, Kenneth Anderson, Phil Grasmick, Jake

Girls' and Boys' Golf



FRONT ROW: Michele Fengel, Laurie Lehmkuhl, Julie Nelson, Lynn Harris, Susie Lane. SECOND ROW: Linda Lovig, Lana Harris, Judy Knoke, Martha Bangston, Diane Henderson. THIRD ROW: Denise Gourley, Peg Peterson, Sherry Gillespie, Pat Knoke.



FRONT ROW: Mark Eno, Tom Pollock, Roger Simpson, Danny Carlson. BACK ROW: Bob Watts, Marty Schaffer, Denny Darnold, Kenny Anderson, Philip Anderson. (Not Pictured, Coach Jake Grasmick.)

84: Baseball Eno, Mark Graham, Bob Boggess, Bill Boggess, Dick Williams, Stuart Peterson, Neal Schafer, Marty Stephens, Howard Dunn, Dirk Anderson, Kenneth Gray, Lee Dunn, Stan Peterman, Stan Smith, Keith Darnold, Denny Gourley, Mike Rhamy, David Sunderman, Byron Clark, Gary Fitzwater, Steve Shipley, Charles Blank, Bob Anderson, Carl Skahill, David Kernen, John Dicks, Arnold Skahill, Mark

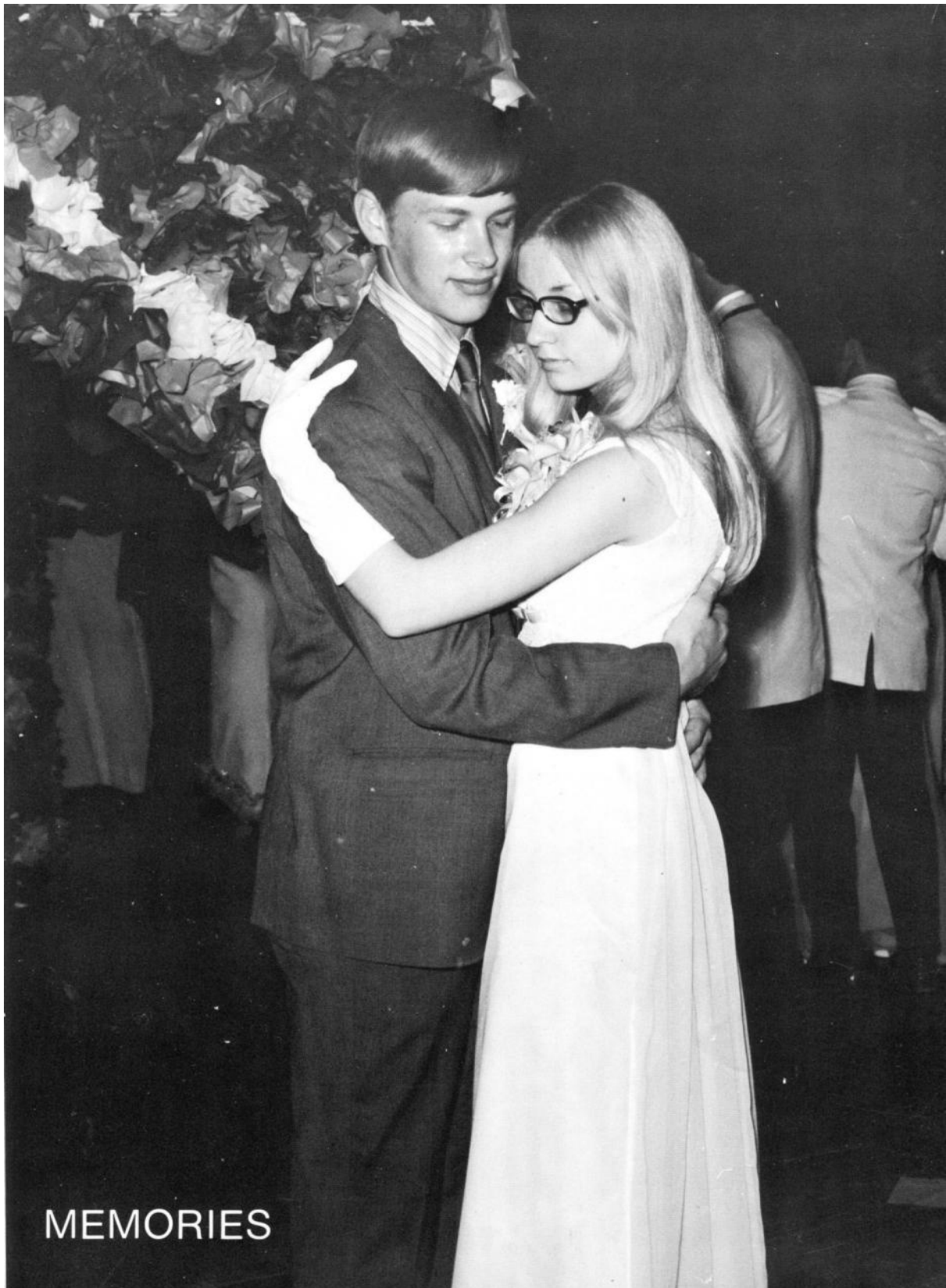
Baseball



VARSITY—FRONT ROW: Mark Eno, Bob Graham, Bill Boggess, Dick Boggess, Stuart Williams, Neal Peterson, Marty Schafer. BACK ROW: Howard Stephens, Dirk Dunn, Ken Anderson, Lee Gray, Stan Dunn, Stan Peterman, Keith Smith, Denny Darnold.



JR. VARSITY—FRONT ROW: Mike Gourley, David Rhamy, Byron Sunderman, Gary Clark, Steve Fitzwater, Charles Shipley. BACK ROW: Bob Blank, Carl Anderson, David Skahill, John Kernen, Arnold Dicks, Mark Skahill.





1970 Junior-Senior Banquet & Prom



WAITRESSES: Diane Haley, Barb Franson, Carol Lewis, Sara Gustafson, Lauren Lovig, Carla Scott.



WAITERS: Marty Schafer, Joel Bashaw, Mark Eno, Tom Pollock, Mark Parker, Danny Carlson.



Sutphen Scholarship (Science Award).

Awards



Citizenship Award



Schroeder Scholarship



Annual
Dedication



Home Ec. Award



Agriculture Awards



Sportsmanship Awards.

89: Scholars Anderson, Pat Boggess, Elaine Boggess, Bill Brown, Charm Clark, Randy Dunn, Dirk Fast, Doug Johnson, Marcia Muller, Jack Weaver, Norman Roberts, Sandy

Top Scholars



Pat
Anderson



Elaine
Boggess



Bill
Boggess



Charm
Brown



Randy
Clark



Dirk
Dunn



Doug
Fast



Marcia
Johnson



Norm
Weaver



Sandy
Roberts



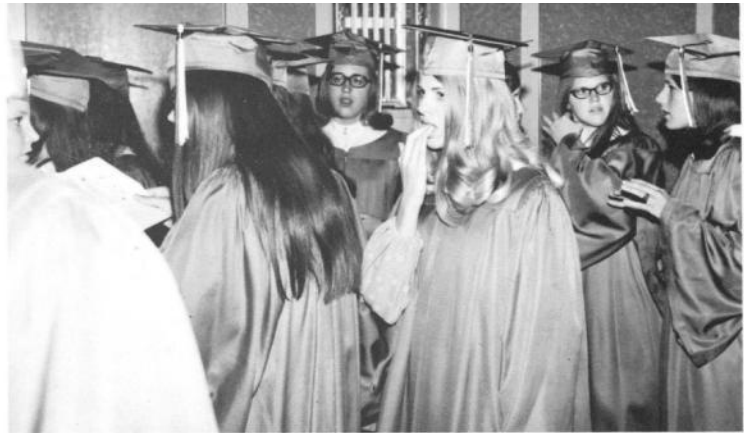
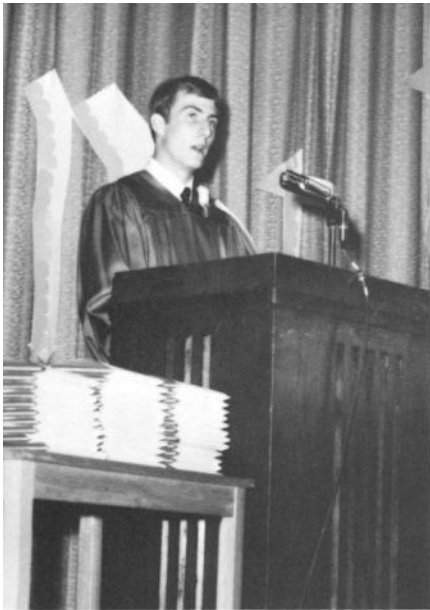
Jack
Muller



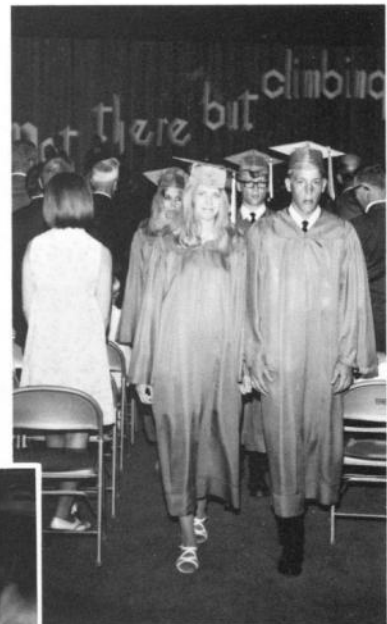
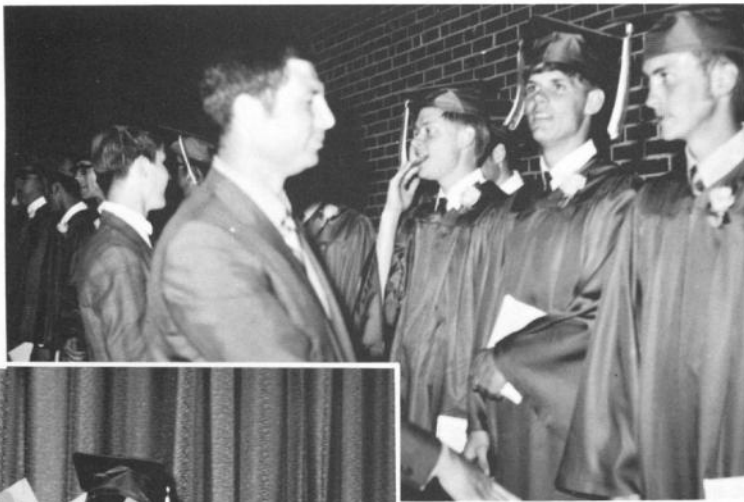
SALUTATORIAN: Dirk Dunn

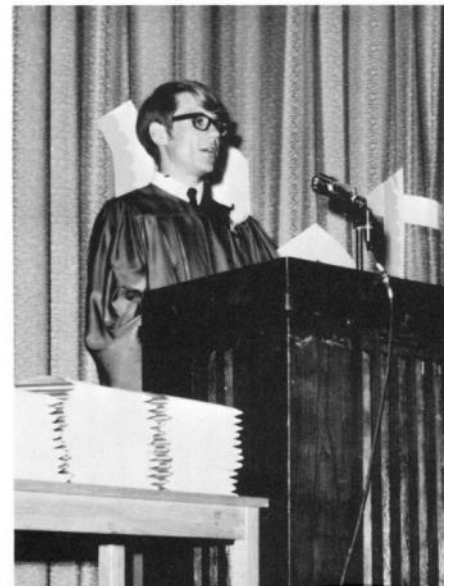


VALEDICTORIAN: Bill Boggess



Graduating Class
of
1970





Those Were the Days . . .



Athletic Banquet



A fun-filled hour with Mrs. Wertman.



Sr. Float



Trick or Treat



Pep Assembly



A busy Econ. class.



"I love ya little cutie but my office is my duty."



"Boy! You should have seen the one I had out last night."



FAREWELL



GUNDERMAN
INSURANCE
AGENCY

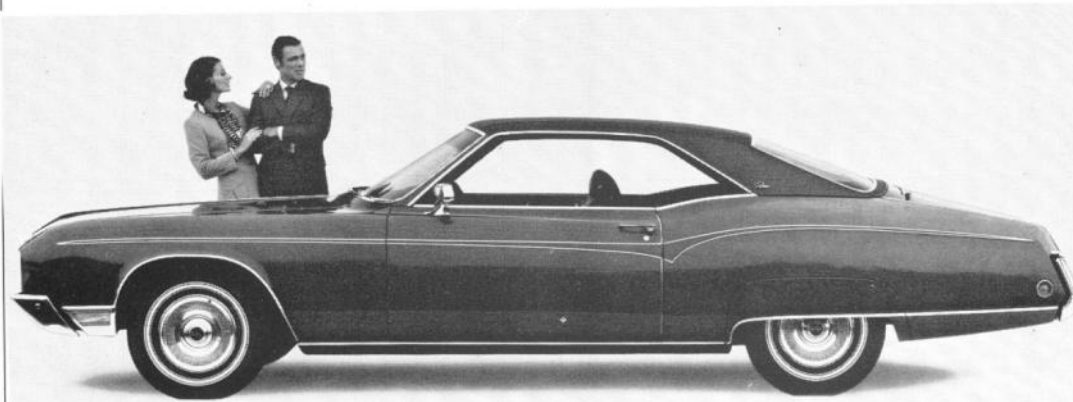


THERE'S A LOT GOING FOR YOU



IF YOU SHOP HY-VEE!

McALPIN MOTORS INC.



Washington Ave. & Hwy. 48

Red Oak, Iowa

STERN STUDIO

"Portraits In the Modern Trend"

Distinctive Portraiture

School Photography

JANE'S PAPER—PAINT—AND GIFTS

Tim Marsh

761-5643

Villisca, Iowa

GREEN LANTERN CAFE

Villisca, Iowa

761-5333

Donations:

Dr. Claude Richey

Dr. Sam Poore

Geneva Taylor

Tom Dodsén

Paul & Helen Sutphen

Dr. Wendell Pollock

LEONARD POSTEN
SALES COMPANY



RED CROSS
DRUG STORE

Phone 3370

Red Oak, Iowa

The Store of Quality

HONEYMAN DRUG STORE



Villisca, Iowa

SEARS

508 Fourth Street

Phone 2508

Red Oak, Iowa

TOM ENARSON

Representing:



Ia. Mutl. Ins. Ass'n.

Villisca, Iowa

McKENZIE DRUG STORE
Dial 2372 Red Oak, Iowa

Vitamin Headquarters

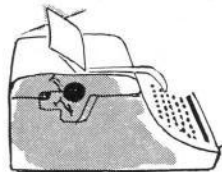


DANIELSON IMPLEMENT CO.
INCORPORATED
Sales—Service—Farm Seeds
Phone 761-5212—Villisca, Ia. 50864



Southwest Iowa's Lowest Grocery
Prices
HUNT'S SUPER VALU
Red Oak

RED OAK OFFICE EQUIPMENT CO.
210 Coolbaugh St. Phone 4106
Red Oak, Iowa
W. A. (Bill) Stoural



GAMBLES

Autho. Dealer
Jim Williams and Darrel Wichman
Clarinda, Iowa

ENO FURNITURE COMPANY



Villisca, Iowa

761-2102

LIVINGSTON'S CLOTHING STORE

The Men's Corner

Men and Boys' Wear

Clarinda, Iowa

MULLER'S STORE

Fabrics and Fashions

in Villisca

Since 1913

BOB'S SKELLY SERVICE



Bob Brown—Manager

Gasolines
Phone 761-4242

Firestone Tires
Villisca, Ia.

ART'S SHOES

SHOES



Fine Family Footwear
Southside Square Clarinda, Iowa

CLARINDA OUTLET STORE

Shop here and Save—We Sell for
Less

Southeast Corner Square
Vernon and Esther Hamilton
Clarinda, Iowa

Wolfe Funeral Home
Villisca, Iowa

Clark Brothers Garage
Villisca, Iowa

Jim's Barber Shop
Villisca, Iowa

Larson Jewelers
Red Oak, Iowa

Jessen's Clothing
Red Oak, Iowa

Brown's Shoe Fit Company
Red Oak, Iowa

Sundell Shoe Company
Red Oak, Iowa

Carol's Dress Shop
Red Oak, Iowa

Cole's Jewelry Store
Red Oak, Iowa

Thomsen-Bergren Hardware
Red Oak, Iowa

Marsh Motors Villisca
Chrysler & Plymouth Dealer

Nodaway, Service and
Jerry's Grocery, Cafe & Bar

Shaver's Popcorn
Villisca, Iowa 761-4772

Weil's Clothing
Clarinda, Iowa

Nodaway Beauty Shop
Nodaway, Iowa 761-3226

G & S Plumbing, Heating, & Wiring
761-5181 or 761-5085 Villisca, Ia.

Villisca Monument Works
761-5342 L. R. Farmer

Jackie's Beauty Salons
404 3rd & 410 Reed Red Oak

Mode-O-Day
Red Oak, Iowa

The Sew'n'Sew Fabric Shop
419 Reed St. Red Oak, Iowa

Community Gas
761-5102 Villisca, Iowa

Means Hardware
Villisca, Iowa

Blue Jay Barber Shop
Dale Carmichael Main Street

Marion Needham General Repair
Phone 761-5233 Villisca

Corner Lunch
Villisca 761-3179

Villisca Review
Villisca Community Newspaper

Sierp Oil Company
761-3102 Villisca

Villisca Laundromat
Villisca, Iowa

The Crest—Men's Headquarters
Red Oak, Iowa

Cramer's Jewelry Since 1905
Clarinda, Iowa

Peterson's Mercantile
Clarinda, Iowa

Weiner's Town & Country
Villisca, Iowa

Draper's Produce & Grocery
Villisca, Iowa 761-3165

Izola Jenkins Tea Room
Villisca, Iowa 761-4646

Brown's Shoe Fit Company
Clarinda, Iowa

Forsythe's Hatchery—Wayne Feed
Villisca, Iowa

Co-op Supply Assn.
Villisca, Iowa 712-761-5142

Mary Lou's Island of Beauty
Villisca, Iowa

Houghton State Bank
Red Oak Elliott

Montgomery County Bank
Red Oak, Iowa

Smith Jewelers
Red Oak, Iowa

Don's Grocery
Viking Lake

Bob's Service
Nodaway, Iowa

