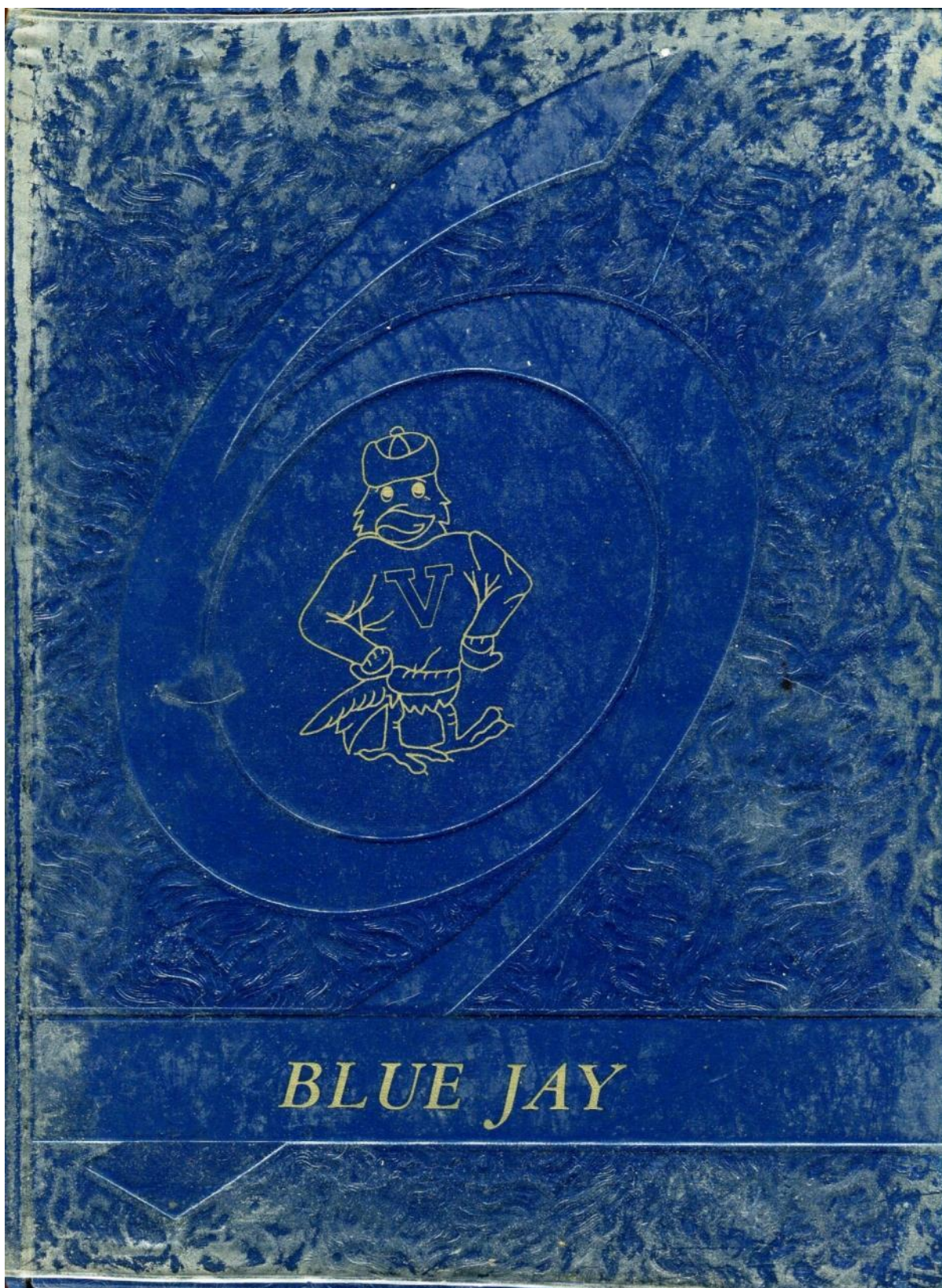


Scanned by and searchable text developed by Jim Artlip (VHS1960)

Copyright © 2012 Jim Artlip, all rights reserved

This file provided free to users for private, non-commercial use only







Presenting . . .



The 1969 Bluejay

Villisca Community School

Villisca, Iowa

Volume XLIV

Table of Contents

Title Page	1
Tribute	3
Foreward	4
Dedication	5
Administration and Personnel	6
Seniors	13
Underclassmen	25
Organizations	33
Sports	57
Social	71
Prom	82
Awards	84
Graduation	86
Advertisements	90

A Tribute to Dr. and Mrs. Sullivan



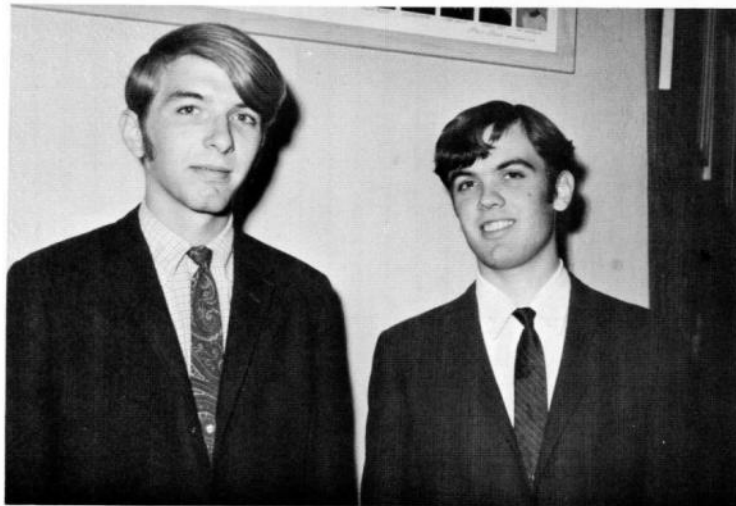
Gifts of appreciation from the Villisca Faculty.



A dedicated Administrator.

The Sullivans moved to Villisca in 1959. Mr. Sullivan was principal his first two years at VHS and superintendent the last eight years. While serving as superintendent in '66, he received his Doctors degree from the University of Nebraska. The past three years Dr. Sullivan served as President of Southwest Iowa Education Association and was on the Executive Board of S.W.I.E.A. and also the South Central Iowa Education Association. Besides being on the Representative Council of Girls Athletic Union for four years, Dr. Sullivan is a member of American Association of School Administrators, professional fraternity Phi Delta Kappa, National Education Association, Iowa School Administrators, Iowa Education Association, and Association of Supervision and Curriculum. The Sullivans will be missed by the students and faculty of VHS as well as many friends of the community.

Foreword



Mankind is going down the drain. So say the self-appointed critics of our time. What they don't realize is that mankind has at no time been any place else. Man has actually advanced no farther than the level of civilization attained by the most primitive caveman. Modern man still discriminates, destroys, and defies. Technical advancement has merely made it easier to accomplish these ends.

We, the class of '69, have the opportunity to make a contribution far greater in potential than the electric light, automobile, or atomic bomb. We can attempt to restore human honor and dignity to every individual; we can promote compassion for one's adversaries; and, we can strive to instill respect for one's chosen leaders. Discrimination and persecution, or respect and dignity? Selfishness or generosity? Contempt or concern? Hatred or compassion? In short, primitive futility or true civilization?

... It's up to us.

Dedication



In addition to teaching history and speech, she has been a loyal Y-Teen and Drama sponsor. Using her own talents in the field of dramatics, she has helped to put on such entertainment as the Musical Review, Home Talent Show, and many plays.

Her school spirit and ability to get along with others has made her a well-liked teacher of V.H.S. and the community.

With sincere appreciation for her tireless work, we proudly dedicate the 1969 Bluejay to Miss Sharon O'Leary.

Administration



LOUIS A. SULLIVAN
Superintendent



ROBERT BAXTER
Principal



SCHOOL BOARD—BACK: Willis Marvick, Don Means, Vice-president; Gerald Maxwell, Gene Smith. FRONT: Tom Rusk, President; Louis Sullivan, Roberta Dickey, Secretary; Ethel Gunderman, Treasurer (NOT PICTURED).

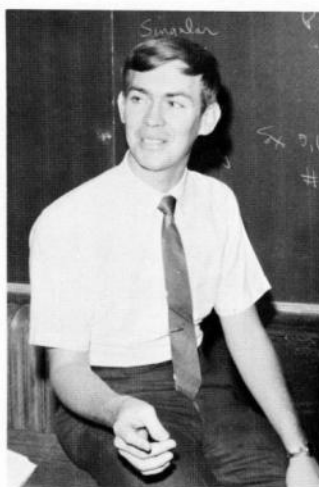
Faculty



PAUL BARKER
Commercial
Annual



WAYNE CHANEY
Chemistry
Physics



PATRICK BENNETT
Psychology-Sociology
English 9 & 10



PHIL COMSTOCK
General Science
Biology
Coach

VICTOR ELLISON
Spanish
English 9



ROBERT FELDMAN
Vocal Music
Study Hall



JAKE GRASMICK
American Problems
Athletic Director
World History

LARRY HUMMEL
Industrial Arts



GARY JOHNSON
Algebra II
General Math
Coach



DWIGHT LEWIS
Guidance Counselor



JANICE LEWIS
Typing



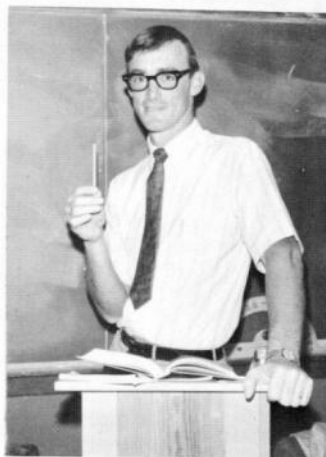
SHARON O'LEARY
American History
Speech



RUTH PAULSEN
English 9
Library



NADIM SAIKALY
Study Hall Monitor



BILL SCOTT
Alegbra I
Geometry
Coach



SYLVIA SMITH
Home Economics
Family Living



DALE SPENCER
Agriculture



GAYLIN SUDIK
Band



MARCH TINKHAM
English
Volcano



HELEN SUTPHEN
School Nurse



TERRY TWIGG
Art



LEONA WERTMAN
Physical Education

Personnel



LORUSS GRASMICK
Superintendent's Secretary



CAROL GREENFIELD
Principal's Secretary



JERRY COOPER
Custodian



ALVIN ZELLMER
Head Custodian



PAUL NORTHUP
Custodian

12: Personnel Cooks BusDrivers Doan,Mildred Weaver,Edna Brannan,Irma Stackhouse,Evadna Marvick,Floyd Frazee,John Kraft,Carroll Abbott,Gladys Copelin,Joe Cooper,Jerry Lewis,Lawrence Buntsma,Bill Kemery,John March,Julius Wirth,Don

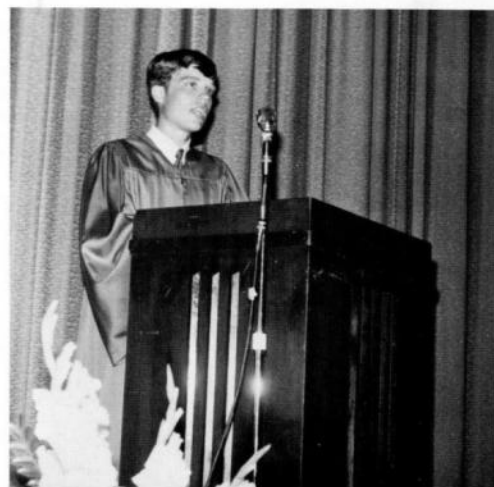
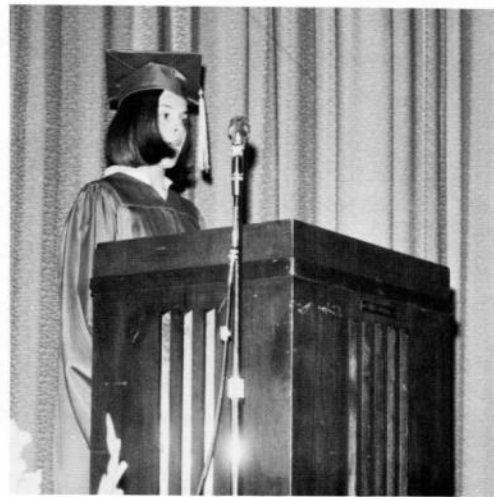
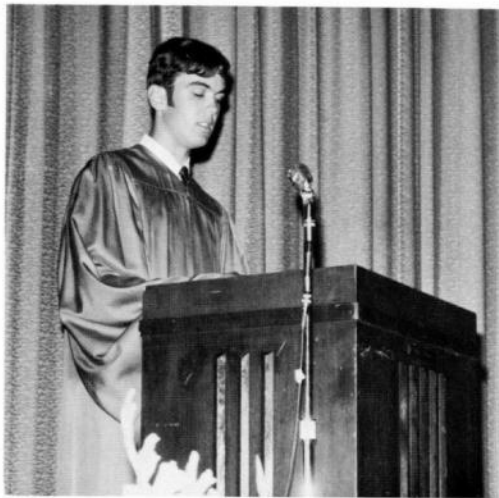
Cooks and Bus Drivers



Mildred Doan, Edna Weaver, Irma Brannan, Evadna Stackhouse.

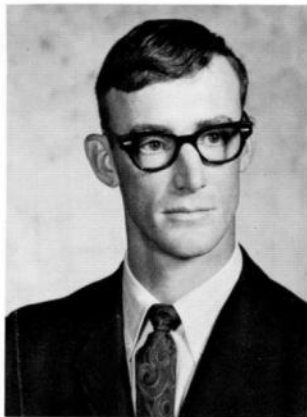


Floyd Marvick, John Frazee, Carroll Kraft, Gladys Abbott, Joe Copelin, Jerry Cooper, Lawrence Lewis, Bill Buntsma, John Kemery, Julius March, Don Wirth.

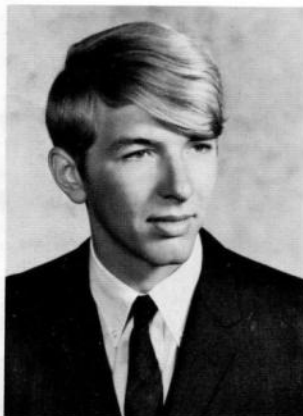


We're out to change the shape of things
to come
SENIORS

BILL SCOTT, Sponsor

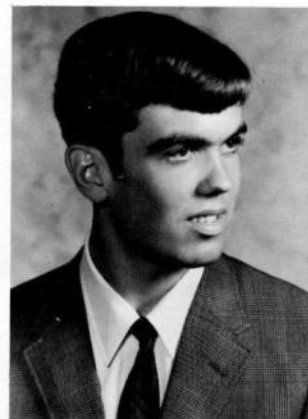


PAUL BARKER, Sponsor



BOB HARPER "He may lose his heart but never his head." Science Club 3,4, Student Council 3,4, Class Officer 4, Pres.

JIM RUSK "I can drive better with one hand, than most men can with two." Letter Club 4, Science Club 1, 2,3,4, Annual Staff 3, Volcano Staff 3, Football 1,2,3,4, Basketball 1,2,3, Track 1,3, Baseball 1,2,3,4, Class Officer 4, Vice-pres., Concert Band 1,2,3, Marching Band 1,2,3.



PAT McCONNELL "There are many subjects, but only one queen." Drama 1,2,3,4, Council 2,3,4, Vice-pres. 3, Pres. 4, Y-Teens 1,2,3,4, Cabinet 2,3,4, Vice-pres. 3, Treas. 4, Chorus Council 4, Girls Glee 2,3, Chorus 1,2,3, 4, Little All State-Chorus 3, Musical Review 4, One Act 4, Class Officer 3,4, Sec. Homecoming Queen 4, Office Sec.-Princ. 2,3, Ag. Sec. 1,2, Supt. 4.



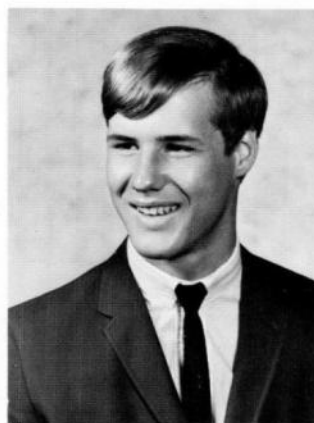
MARY POORE "Calm as the night, deep as the sea." Y-Teens 1,2,3,4, Cabinet 2,3,4, Pres. 4, Band 1,2,3,4, Council 3, Spanish Club 1,2, Volcano Staff 3, Concert Band 1,2,3,4, Marching Band 1,2,3,4, Little Allstate-Band 4, Class Officer 4, Treas.



PAT ANDERSON "If silence were golden she would be a millionaire" Drama 4, Y-Teens 1, 2, 3, 4, Spanish Club 2, Librarians 1, 2.



JOHN BAKER "I've served my term now let me out" Drama 2, 3, Teen Haven Council 3, Letter Club 2, 3, 4, Pres. 4, Student Council 2, 3, 4, Vice-pres. 3, Treasurer 4, Math 4, Football 1, 2, 3, 4, Basketball 2, Track 1, 3, Golf 2, 4, Class Officer Vice-president 1, President 2.



PAM BANGSTON "If you can't convince 'em confuse 'em" Drama 2, 3, 4, Council 4, Clerk, Y-Teens 1, 2, 3, 4; Cabinet 3, 4, Band Council 3, Spanish 1, Librarians 2, 3, 4, Vice-president 4, Annual Staff 2, 3, 4, Jr. Editor 3, Editor 4, Volcanco Staff 4, Class Secretary 1, J.V. Cheerleader 2, Varsity Cheerleader 4, Band Concert 1, 2, 3, 4, Marching 1, 2, 3, 4, Band Queen Candidate 3, 4, Homecoming Queen Candidate 4.



CURTIS BLAND "Why should the devil have all the fun?" Letter Club 2, 3, 4, F.F.A. 2, 3, Science Club 1, Football 1, 2, 3, 4, Basketball 1, 2, 3, 4, Track 1, 2, 3, Baseball 1, 2, 3.



RANDY BLOOM "There is only one leading lady in his cast of many characters" F.C.A. 3, 4, Secretary 4, Drama 1, 2, 3, 4, Council 2, 3, Treasurer 2, Letter Club 2, 3, 4, Science Club 4, Annual Staff 1, 2, 3, Football 1, 2, 3, 4, Track 1, 2, 4, All-Conference Football 4, Class Officer 1, Treasurer 1, Boy's Glee 1, 2, 3, One-Act 3, 4.



ED BOGGES "Frequently with my brain, I gently think a thought" F.C.A. 3, Letter Club 2, 3, 4, Science Club 1, 2, 3, 4, Volcanco Staff 3, Football 1, 2, 3, 4, Track 1, 2, 3, 4, Class Officer Treasurer 3, Little All State-Band 4, Concert 1, 2, 3, 4, Marching 1, 2, 3, 4.



KATHY BOYLE "No one has to amuse me. I amuse myself." Y-Teens 1,2,3, Spanish 1, 2, Girls Glee 2, Chorus 1,2,3.



PAT BRADLEY "The truly great are often misunderstood." Drama 4, Y-Teens 1,2,3,4, Cabinet 4, Spanish Club 1, Little All State —Chorus 4, Girls Glee 2,3, Chorus 1,2,3,4.

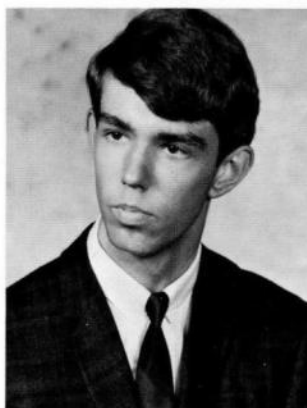


VICKY BROWN "I'll do anything once." Drama 1,2,3,4, Y-Teens 1,2,3,4, J-V Cheerleader 1, Ag. Secretary 2,3,4, Girls Glee 2, Chorus 2, FFA Sweetheart Candidate 4, Musical Review

JAMES BRUCE "If only I could sleep as soundly at night as I can when it's time to get up."

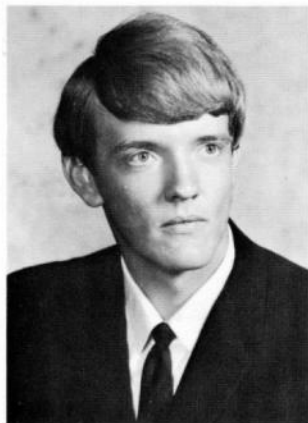


GLORIA BUCKNEBERG "How come my temperature rises when I see a blonde?" Drama 2,3,4, Y-Teens 1,2,3,4, Band Council 1, Letter Club 4, Spanish Club 1, Librarians 3,4, Treasurer 4, J-V Cheerleader 1, Track Queen Candidate 1,2,3, Band Queen Candidate 2, Homecoming Queen Candidate 4, March of Dimes Queen 4, Office Secretary 4, Little All State 4, FFA Sweetheart Candidate 4, Small Groups Instrumental 1,2,3,4, Golf 3, Class Officer, Sec. 2, Varsity Cheerleader 2,3,4, Band 1,2,3,4,

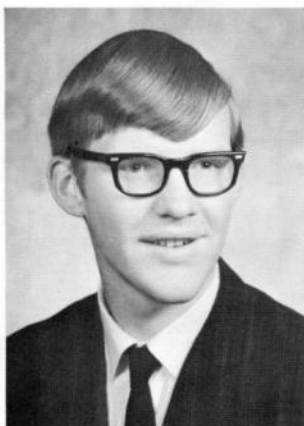
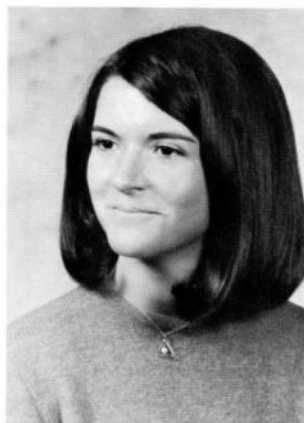


DOUG DARNOLD "Personally, I think the best presents come in small packages." Band Council 2,3,4, Letter Club 2, Spanish Club 1, Science Club 1,2,3, Basketball 1, Golf 1,2, Little All State 4, Band 1,2,3,4, Concert Band 1,2,3,4, Marching Band 1,2,3,4, Small Group Instrumental 1,2,3,4.

LARRY DeMeo
"Whenever I feel like
working, I lay down
until the feeling goes
away."



BEV ERICKSON
"Somebody strangle her
before she talks herself
to death." Y-Teens 1,2,
3,4, Letter Club 3,4,
Spanish Club 1, Vol-
cano Staff 3, Basketball
2,3,4, Band Queen Can-
didate 4, Little All State
-Band 4, Concert Band
1,2,3,4, Marching Band
1,2,3,4.



DENNY FAST "A
welcome new face, with
a personality which be-
lies his red hair." Trans-
fer. Letter Club 4, Bas-
ketball 4, Golf 4.

GREG FRANSON
"There are two sides to
every story—the wrong
side and my side."
Drama 1,2,3,4, FFA 2,
3,4, Spanish Club 1,
Football 1,2,3, Track 1,
Class Officer 2, Vice-
pres., One Act 4.



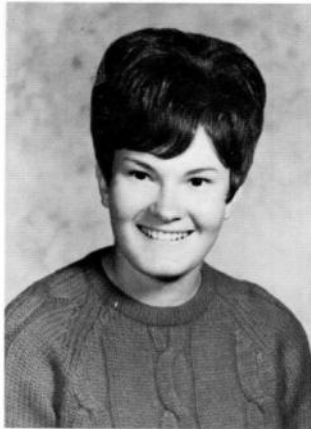
CHERYL FREY "If
the teachers would
listen they could learn
a lot from me." Drama
1, Y-Teens 1,2,3,4,
Cabinet 2, Letter Club
3,4, Spanish Club 1,
Volcano Staff 3, Math
Club 1,2,3,4, Basketball
1,2,3, Softball 1,2,4,
Office Sec. 4, Concert
Band 1,2,3,4, Marching
Band 1,2,3,4.



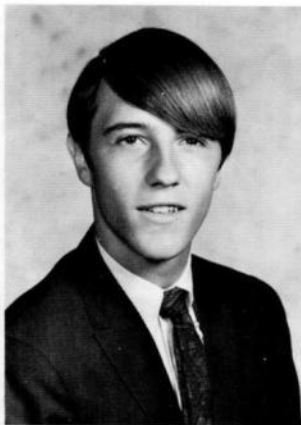
CAROL GEYER "Play
and I'll play with you,
study and you'll study
alone." Y-Teens 1,2,3,
4, Chorus Council 3,
Girls Glee 1,2,3, Chorus
1,2,3, Small Groups-
Vocal 1, Little All
State-Corus 1, Li-
brarians 1, Spanish
Club 1,2.



KATHY GOURLEY
 "I'm here, but my thoughts are elsewhere." Y-Teens 1,2,3,4, Letter Club 3, Spanish Club 1, Librarians 4, Basketball 1,2,3, Track 1, Softball 1,2, Concert Band 1,2,3,4, Marching Band 1,2,3,4.

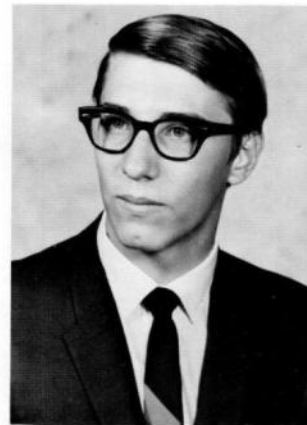


MARSHA GREENFIELD "Around this girl never blink, it might be mistaken for a wink." Drama 4, Y-Teens 1,2,3,4, Cabinet 2,3, Teen Haven Council 4, Chorus Council 3,4, Girls Glee 3,4, Girls Glee Council, Pres. 3, V.-Pres. 4, Varsity Cheerleader 4, Office 4, Varsity Cheerleader 4, Office Secretary 2,3,4, Little All State Chorus 3,4, Girls Glee 2,3,4, Chorus 1,2,3,4.

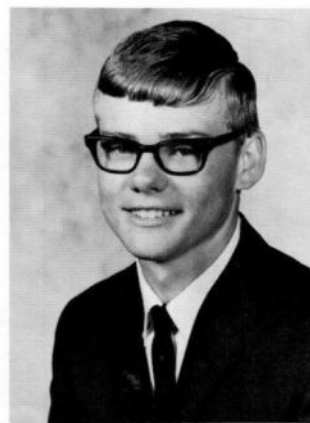
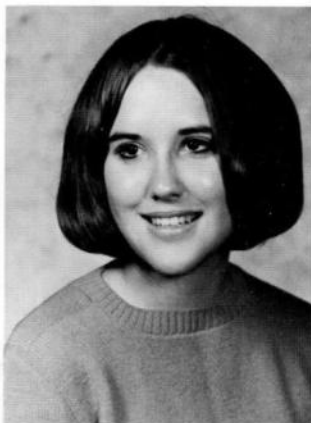


JEFF GRIFFIN "I can resist anything but temptation." FCA 3,4, Captain 3,4, Drama 1,2,3,4, Drama Council 3, Teen Haven Council 2, Chorus Council 3, Letter Club 3,4, Spanish Club 1, Volcano Staff 3, Student Council 1, FTA 2, Football 1,2,3,4, Basketball 1,2,4, Track 1,2,3, Baseball 1,2,3, Class President 1, Vice-president 3, Boys Glee 2,3, Boys Glee President 3, Chorus 2,3, One Act Play 3,4, Small Vocal Group 3.

DOUG HONEYMAN "Bashful and quiet but noticeable." Drama 1,2, Spanish Club 1, Science Club 2,3,4, Football 1, Golf 2,3,4, Little All State Band 1, Concert Band 1,2,3,4, Marching Band 1,2,3,4.

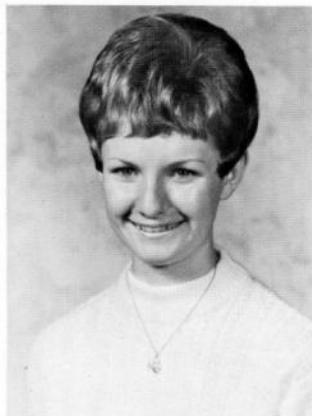


SANDY HYINK "The days are too short for all the thoughts I want to think." Transfer. National Junior Honor Society 1, Pep Club 2, Red Cross 2, Girl Scouts Vice-Pres. 2,3.

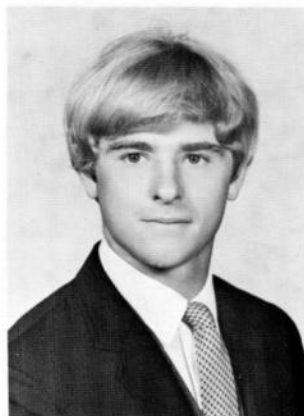


MIKE JACKSON "Don't look at me, I didn't do it." FFA 1,2,3,4, FFA Chapter Reporter.

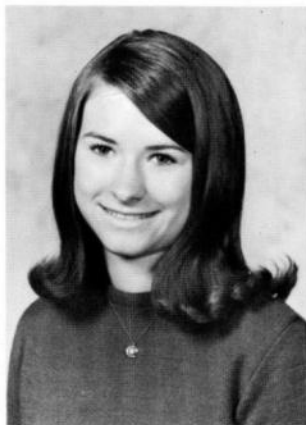
BRENDA JOHNSON
 "Always work—no play." Drama 1,3,4, Y-Teens 1,2,3,4, Cabinet 3, Band 4, Concert 1,2,3,4, Marching 1,2,3,4, Basketball 1, Little All State Band 4, Girls Glee 3,4, Small Group Vocal 3,4.



STEVE LYLE "I'll tell you, they need more men like me." Drama 1,2,3,4, Letter Club 2,3,4, FFA 2,3,4, Spanish 1,2, Volcano Staff 3, Student Council 4, Pres. 4, FFA District Vice-Pres. 3,4, Football 1,2,3,4, Basketball 2, Track 2,3, Golf 4, Baseball 1, Class Pres. 3, March of Dimes King 4, One Act Play 3,4, Boy's State 3.



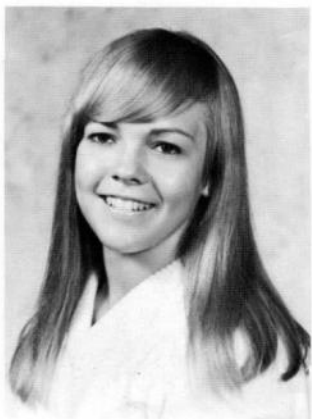
JANESE McALPIN
 "Life is only what you make it—nothing more." Drama 1,2,3,4, Y-Teens 1,2,3,4, Librarians 2,3, Annual Staff 4, Volcano Staff 4, Girls Glee 1,2,3, Chorus 1,2,3.



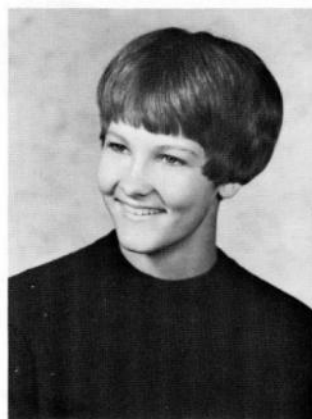
SANDY McCLELLAND "A head full of knowledge, a heart full of music." Drama 4, Y-Teens 1,2,3,4, Cabinet 4, Chorus 1,4, Spanish Club 1,2, Office Sec. 1,2,3, Little All State—Chorus 3,4, Girls Glee 1,2,3,4 Chorus—Small Groups 1,2,3,4, Musical Review 4.



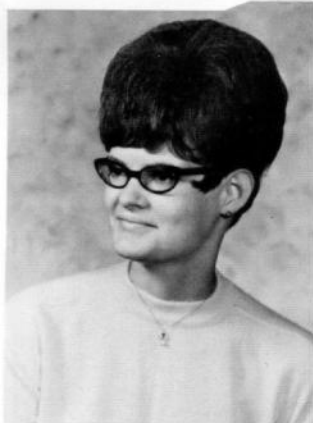
DEED MARCKMANN
 "I didn't live long—single." Y-Teens 1,2,3, Teen Haven Council 1, Girls Glee 1,2,3, Librarians 2,3, Annual Staff 4, Volcano Staff 4, Office Secretary Ag. 3, FFA Sweetheart Candidate 4, Small Group Vocal 2.



COLLEEN MEANS "I was cut out to be an angel, but somehow the pattern got lost." Drama 2,3,4, Council 4, Y-Teens 1,2,3,4, Letter Club 1,2,3,4, Spanish Club 1, Volcano Staff 3, Student Council 1, Basketball 1,2,3, Athletic Secretary 2.



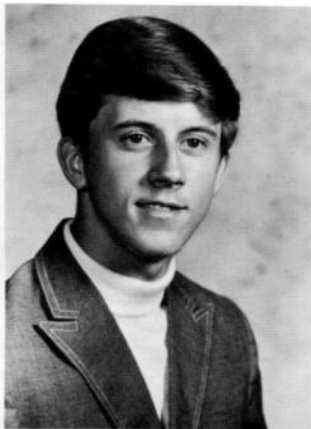
LINDA MEANS "Oh! will a week ever pass that everything goes right?" Drama 2,3, Y-Teens 1,2,3,4, Letter Club 3,4, Basketball Manager 1, Office Sec. 1,2,3,4, FFA Sweetheart Candidate 4, Crisco Homemaking Award 3.



LOIS MEANS "Follow my rule—it's more fun." Drama 2,3,4, Treas. 4, Y-Teens 1,2,3,4, Letter Club 2,3,4, Volcano Staff 3, Student Council 4, Basketball 1,2,3,4, Golf 3, Homecoming Queen Candidate 4, FFA Sweetheart 4, Office Sec. 1, Ag. Sec. 2,3,4.



RICK MEEK "A big smile and loud pipes get attention in life."



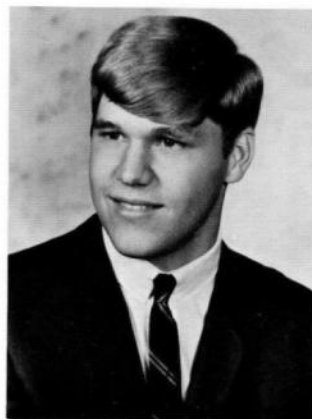
MARLIN OLSON "Chase me girls I'm full of fun." Drama 3, FFA 1,2,3,4 Math Club 1, Class Officer 3 Treas. One Act Play 3.



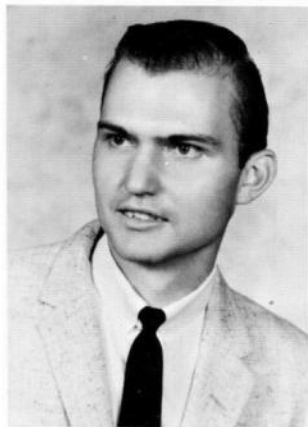
LINDA PERRIN "It matters not how long you live, but how." Drama 1,2,3,4, Y-Teens 1,2,3,4, Cabinet 4, Annual Staff 4, Volcano Staff 3,4, Editor 4, Little All State Band 4, Girls Glee 1, Band 1,2,3,4, Marching and Concert Small Group—Instrumental 2,3,4.



ED PETERSON "He rattles on just like his cars." Band Council 4, Pres. 4, Band 1,2,3,4, Marching and Concert Little All State Band 4, Small Group—Instrumental 2,3,4, Letter Club 3,4, Spanish Club 1,2,3,4, Football 1,2,3,4.



STEVE PETERSON
"God bless the man
who invented sleep."
FFA 2,3,4; Parilamen-
tarian 4.

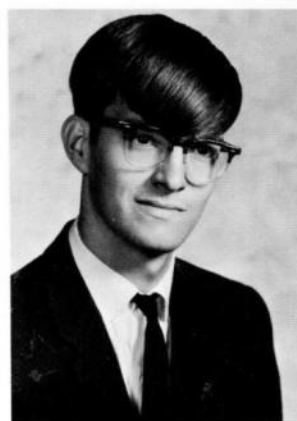


SUE PETERSON "Life
is a picture paint it
well." Drama 1,2,3,4,
Y-Teens 1,2,3,4, Y-
Teen Cabinet 3, Span-
ish Club 1, Band Queen 4
4, Little All State 4,
Band, Concert Band 1,
2,3,4, Marching Band
1,2,3,4.

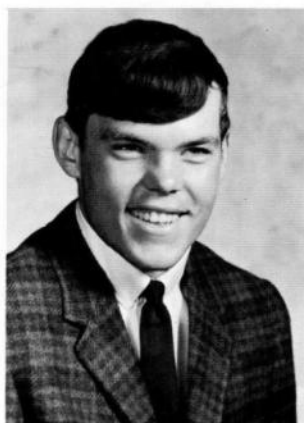


ED PHILPOTT "So
I've graduated, what
else is new?" Drama 2,
Science Club 3, One
Act Play 3, Football 1,
2.

JIM REENTS "He may
do something sensation-
al yet—but then." Li-
brarians 3,4, Basketball
2,4, Track, 3,4, Cross
Country 4, Baseball 4.



GARY RHAMY "It
is the man of mischief
who keeps the world
alive." Teen Haven
Council 4, Letterman's
Club 2,3,4, FFA 1,2,3,
4, Annual Staff 3, Foot-
ball 1,2,3,4, Basketball
1,2,3,4, Track 1,2,3,4,
Baseball 1,2,3,4, One
Act Play 3.



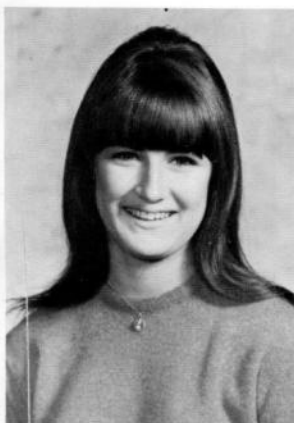
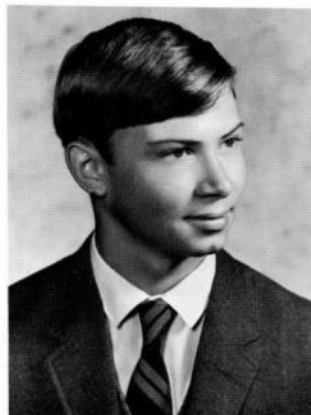
SHERI SCANLON
"The course of true
love never did run
smooth." Drama 2,3,4,
Y-Teens 3,4, Letter-
man's Club 2,3,4, Span-
ish Club 1, Librarians
1,2,3,4, Pres. 4, Sec. 3,
District Sec. 4, State
Historian 4, Basketball
1,2,3,4, Track 1,2,3,
Softball 1,2,3,4, Con-
cert Band 1,2,3, March-
ing Band 1,2,3, One
Act Play 4, Student
Director 4.



SANDY SIMMONS
 "The gift of being agreeable." Y-Teens 1, 2,3,4, Chorus 2, Girls Glee 2,3,4, Spanish Club 2,3,4, Sec.-Treas. 4, Librarians 2,3,4, Sec. 4.

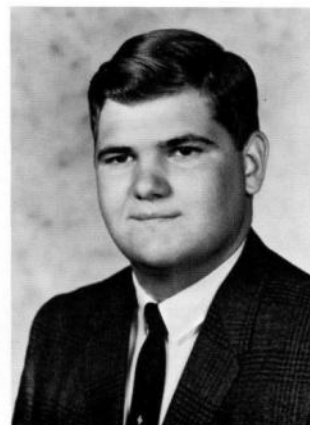


DENNIS SMITH "It was obvious he was cut out to be a leader, he was just sewn up wrong." FFA 1,2,3,4, Reporter 4, Science Club 4.



JEANNE STRAIN "I sigh at many, but love only one." Drama Club 1,2,3,4, Council 1, Y-Teens 1,2,3,4, Cabinet 1, Teen Haven Council 3, Annual Staff 4, Volcano Staff 4, Student Council 2,3, Varsity Cheerleader 2,3,4, 3,4, J.-V. Cheerleader 1, Track Queen Candidate 3, Homecoming Queen Candidate 4, Office Sec. 2,3, Ag. Sec. 1, Girls Glee 1,2, Chorus 1,2, Musical Review 4.

DAVID STALDER
 "The best thing I like about school is going home." Letter Club 1, 2,3,4, Football Mgr. 1, 2,3,4, Basketball Mgr. 1,2, Track Mgr. 1,2, Baseball Mgr. 1,2, Marching Band 1,2,3, Concert Band 1,2,3.



MELODY STRICKLAND "I make the most of all that comes and the least of all that goes." Drama Club 3,4, Y-Teens 1,2,3,4, Teen Haven Council 2, Spanish Club 1, Librarians 2,3, Volcano Staff 3,4, Editor 4, Student Council 3, J.-V. Cheerleader 2, Girls Glee 1,2, Chorus 1,2, Musical Review 4.

KURT WARD "Height
turned upside down."
FFA 1,2,3, Science
Club 1.



HOWARD WHITE
"Till I came the world
was incomplete." Sci-
ence Club 1,2,3,4, Li-
brarian, Historian 3,
Vice-Pres. 4, Volcano
Staff 3.



CODY WINTHER
"Someone who likes
life and life likes him."
FFA 1,2,3,4; Treas. 3,
Pres. 4, District Treas.
4, Football 1.

LYNN WOLFE
"Always leave them
laughing when you
say good-bye." Teen
Haven Council 1, FFA
2,3, Science Club 1,2,
Football 1,2, Basket-
ball 1,2,3,4, Baseball 1,
2,3,4, Softball 3, Cross
Country 1, Class Of-
ficer 3, Treas.





Seniors





26: Juniors JuniorClass Anderson,Kenneth Beedle,Sharon Clark,Marilyn Dukes,Bunny Gage,Kenneth Gray,Connie Anderson,Pat Boggess,Elaine Clark,Randy Dunn,Stan Getting,Rod Gray,Janice Baldwin,Tom Boggess,Bill Currin,Russell Fast,Doug Geyer,Vicki Gray,Mike Griffith,Alice Brown,Charm Dickey,Kinney Fengel,Gale Gillespie,Sherry Hausen,Chris Lewis,Dwight Brownlee,Stan Dresser,Donnie Frey,Lyle Gourley,Denise Johnson,Ed Dunn,Dirk Johnson,Marcia Gustafson,Mari Gunderman,Debbie Kernen,Steve Jackson,Randy Bangston,Merri

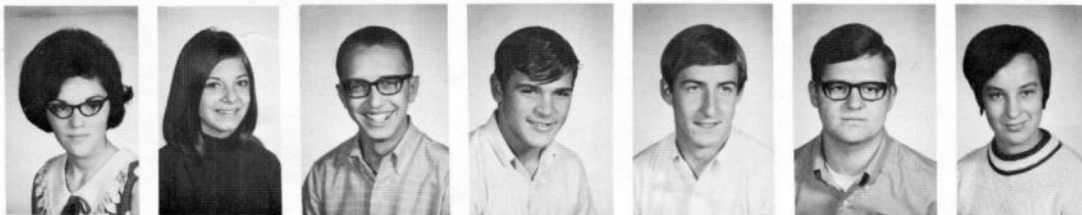
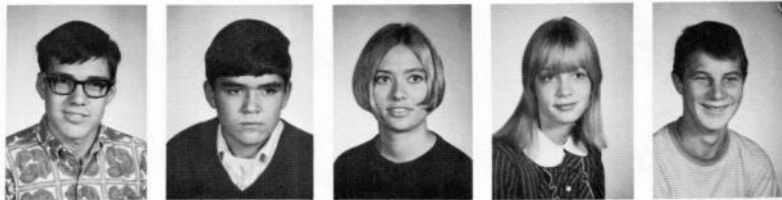
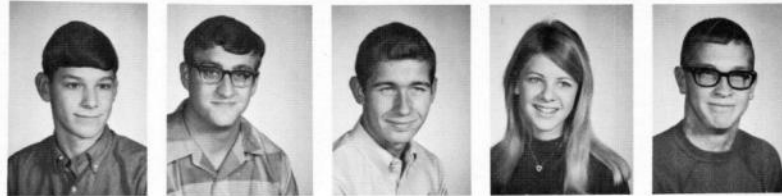
						
					<p><i>Class</i></p> 	
						
						
						
						
						

Ken Anderson	Pat Anderson	Tom Baldwin	Alice Griffith	Mr. Lewis	Dirk Dunn	Debbie Gunderman
Sharon Beedle	Elaine Boggess	Bill Boggess	Charm Brown	Stan Brownlee	Pres.	Vice-Pres.
Marilyn Clark	Randy Clark	Russell Currin	Kinney Dickey	Donnie Dresser	Marcia Johnson	Steve Kernen
Bunny Dukes	Stan Dunn	Doug Fast	Gale Fengel	Lyle Frey	Mari Gustafson	Randy Jackson
Kenny Gage	Rod Getting	Vicki Geyer	Sherry Gillespie	Denise Gourley	Not Pictured	Not Pictured
Connie Gray	Janice Gray	Mike Gray	Chris Hausen	Ed Johnson		Not Pictured

27: Juniors JuniorClass Lovig,Linda Stubbs,Diana Nash,Randy Roberts,Sandy Sunderman,Betty Northup,Larry Comstock,Phil Long,Lorna Means,John Russell,Jim Smith,Jeri Taylor,Roy Kerr,Sheryl Lowe,Mike Muller,Jack Rucker,Dennis Sparks,Betty Wagner,Bill Kraft,Roger McKinley,Wayne O'Rourke,Rick Schremser,Carol Sprague,Carol Weaver,Norman Lewis,Alice Lucas,Jim Peterson,Peggy Shaver,Carole Strand,Joyce Wheeler,Tom Lindberg,Danny Marsh,Tom Raney,Larry Skahill,Mike Stephens,Howard Wilson,Norma



of



Linda Lovig
Sec.
Diana Stubbs
Randy Nash
Not Pictured

Sandy Roberts
Treas.
Betty Sunderman
Larry Northrup
Not Pictured

Mr. Comstock
Lorna Long
John Means
Jim Russell
Jeri Smith
Roy Taylor

Sheryl Kerr
Mike Lowe
Jack Muller
Dennis Rucker
Betty Sparks
Bill Wagner

Roger Kraft
Wayne McKinley
Ricki O'Rourke
Carol Schremser
Carol Sprague
Norm Weaver

Alice Lewis
Jim Lucas
Peg Peterson
Carole Shaver
Joyce Strand
Tom Wheeler

Danny Lindberg
Tom Marsh
Larry Raney
Mike Skahill
Howard Stephens
Norma Wilson

28: Sophomores SophomoreClass Bangston,Martha Core,Joan English,Pam Garey,Sandy Kerr,Connie Beedle,Doug Courcier,Jim Everett,James Goetsch,Jeanette Knoke,Pat Bowling,Susie Danielson,Denny Fast,Debbie Gray,Lee Lindberg,Linda McClelland,Joni Core,Jane Eifert,Gary Figgins,Felicia Harris,Lynn Lyle,LouAnn McClelland,Judy Sudik,Gaylin Eifert,Lewis Focht,Kathy Jacobs,Peggy McAlpin,Jon McConnell,Dennis Peterman,Stan McCoy,Nancy Hunter,Michael Haley,Karen Mack,Connie Sparks,Cheryl



Martha Bangston
Joan Core
Pam English
Sandy Garey
Connie Kerr

Doug Beedle
Jim Courcier
James Everett
Jeanette Goetsch
Pat Knoke



Susan Bowling
Dennis Danielson
Debbie Fast
Lee Gray
Linda Lindberg
Joni McClelland



Jane Core
Gary Eifert
Felicia Figgins
Lynn Harris
LouAnn Lyle
Judy McClelland



Mr. Sudik
Lewis Eifert
Kathy Focht
Peggy Jacobs
Jon McAlpin
Dennis McConnell



Stan Peterman
Pres.
Nancy McCoy
Mike Hunter
Not Pictured



Karen Haley
Vice-Pres.
Connie Mack
Cheryl Sparks
Not Pictured

29: Sophomores SophomoreClass Maxell,Ann Twigg,Sue Winther,Mark Darnold,Denny Ward,Jan Bennett,Patrick Williams,Jerry Marsh,Larry Perry,Mary Ridenour,Marcia Shipley,Tom Smith,Keith Zellmer,Don Marsh,Susan Peterson,George Saikaly,Elie Simmons,Larry Sprague,Rick Zellmer,Jon Means,Nancy Quinn,Kathy Schrader,Janet Skahill,Susan Strain,Jeanette Newlon,Jane Rhamy,Karla Scott,Kathy Smith,Jackie Thompson,Terry

of

1

Ann Maxell
Sec.
Sue Twigg
Mark Winther
Not Pictured

Denny Darnold
Treas.
Jan Ward

Mr. Bennett
Jerry Williams

Larry Marsh
Mary Perry
Marcia Ridenour
Tom Shipley
Keith Smith
Don Zellmer

Susan Marsh
George Peterson
Elie Saikaly
Larry Simmons
Rick Sprague
Jon Zellmer

Nancy Means
Kathy Quinn
Janet Schrader
Susan Skahill
Jeanette Strain

Jane Newlon
Karla Rhamy
Kathy Scott
Jackie Smith
Terry Thompson

30: Freshmen FreshmanClass Bangston,Brenda Bisbee,Dale Brees,Doris Fengel,Michele Harris,Lana King,Rick Bangston,Sheri Boggess,Dick Carlson,Danny Gourley,Debbie Hiltabidel,Barbara Knoke,Judy Bashaw,Joel Boggess,Mary Eno,Mark Gourley,Rita Jackson,Merrie Lehmkuhl,Laurie Beckett,Greg Branan,Marilyn Gage,Karen Graham,Bob Jergenson,LaDonna Long,Joyce Feldman,Robert Brees,Donna Fitzwater,Steve Gray,Terri Kasha,Henry Long,Karen Williams,Stuart Lyle,Beth Doll,Galen Lane,Susan Matherly,Glenn Parker,Mark



Class



Brenda Bangston
Dale Bisbee
Doris Brees
Michelle Fengel
Lana Harris
Ricky King

Sheri Bangston
Dick Boggess
Danny Carlson
Debbie Gourley
Barbara Hiltabidel
Judy Knoke

Joel Bashaw
Mary Boggess
Mark Eno
Rita Gourley
Merri Jackson
Laurie Lehmkuhl

Greg Beckett
Marilyn Brannan
Karen Gage
Bob Graham
LaDonna Jergenson
Joyce Long

Mr. Feldman
Donna Brees
Steve Fitzwater
Terri Gray
Henry Kasha
Karen Long

Stuart Williams
Pres.
Beth Lyle
Galen Doll
Not Pictured

Susie Lane
V.-Pres.
Glenn Matherly
Mark Parker
Not Pictured

31: Freshmen FreshmanClass Dunn,Shelley Smith,Dwight Mack,Nora Pollock,Tom Steffen,Eldonna McKinley,Minnie Ellison,Victor Thompson,Beverly McAlpin,David Newlon,Billy Peterson,Neal Ross,Marty Shipley,Charles Wiechman,Doris Means,Tom Northup,Mike Phillis,Linda Russell,Steve Simmons,Rhonda Wilhelm,Judy Moates,Jolene Perry,Debbie Poore,Ruth Schafer,Marty Simpson,Roger Winther,Craig Nelson,Julie Peterson,Fred Robinson,Larry Shearer,Rick Skahill,Mark Wright,Peggy

of

2



Shelley Dunn Sec. Dwight Smith Nora Mack Not Pictured	Tom Pollock Treas. Eldonna Steffen Minnie McKinley Not Pictured	Mr. Ellison Bev Thompson	David McAlpin Billy Newlon Neil Peterson Marty Ross Charles Shipley Doris Weichmann	Tom Means Mike Northrup Linda Phillis Steve Russell Rhonda Simmons Judy Wilhelm	Jolene Moates Debra Perry Ruth Poore Marty Schafer Roger Simpson Craig Winther	Julie Nelson Fred Peterson Larry Robinson Ricky Shearer Mark Skahill Peggy Wright
---	---	-----------------------------	--	--	---	--





34: Student Council Chaney, Wayne Baker, John L. Lyle, Steve Dunn, Dirk Gunderman, Debbie Twigg, Sue Harper, Bob Nash, Randy Peterman, Stan Roberts, Sandy Long, Joyce Williams, Stuart

Student Council



FRONT: Wayne Chaney, Sponsor: John Baker, Steve Lyle, Dirk Dunn, Debbie Gunderman. BACK ROW: Sue Twigg, Bob Harper, Randy Nash, Stan Peterman, Sandy Roberts, Joyce Long, Stuart Williams.



OFFICERS: Wayne Chaney, Sponsor; John Baker, treasurer; Steve Lyle, president; Debbie Gunderman, secretary; Dirk Dunn, vice-president.

The Student Council has been very active during the 68-69 school year. This year's project included sponsoring the homecoming parade and the Christmas dance. In the school schedule they included many fine assemblies, set up the student lounge, Dress Down Day, and Twirp Week. The 68-69 Student Council has done a fine job and we owe them many thanks.

35: TeenHaven Means, Tom Lehmkuhl, Laurie Gillespie, Sherry Greenfield, Marsha Bennett, Patrick Simmons, Larry Weaver, Norman Rhamy, Gary Knoke, Pat Peterson, Marvin Bloom, Wayne McConnell, Raymond Harris, Carolyn Haley, Calvin Mrs. Williams, David Mrs. Strain, Clarence Mrs. Pollock, Wendell Mrs. Dunn, Bill Mrs.

Teen Haven



FRONT ROW: Tom Means, Laurie Lehmkuhl, Sherry Gillespie, Marse Greenfield. BACK ROW: Sponsor Mr. Bennett, Larry Simmons, Norman Weaver, Gary Rhamy, Pat Knoke.



FRONT ROW: Marvin Peterson, Wayne Bloom, Raymond McConnell. BACK ROW: Mrs. Bob Harris, Mrs. Calvin Haley, Mrs. David Williams, Mrs. Clarence Strain, Mrs. Wendell Pollock, Mrs. Bill Dunn.

Teen Haven council has been busy during the 68-69 school year. Money-raising projects such as selling raffle tickets for a radio and holding a "sloppy joe" supper were successful. Much thanks should be given to the adult board who helped redecorate the Teen Haven. The new look includes paneling the walls, a psychedelic mural on the small wall opposite the door, and a lowered cable ceiling.



Band

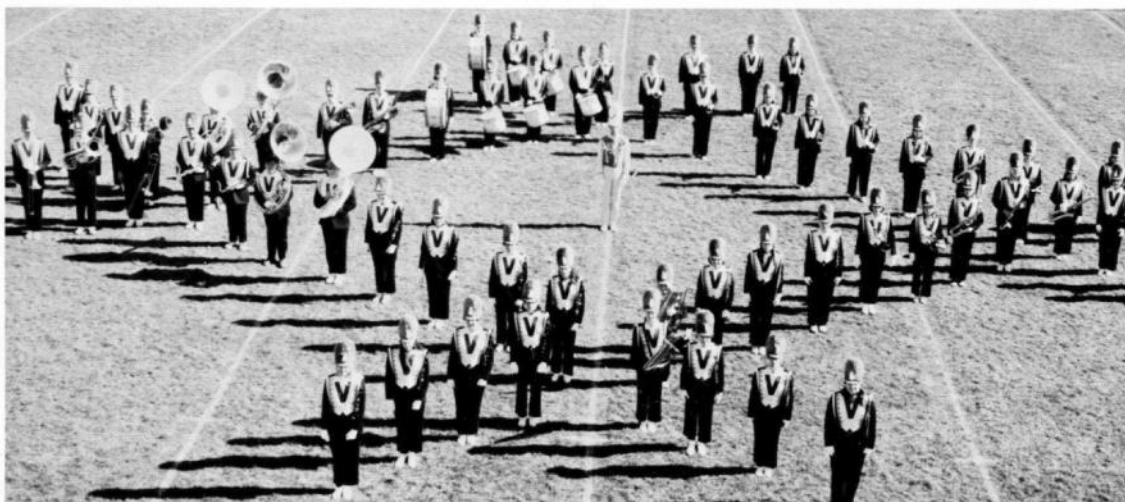


VHS Pep Band added to school spirit this year with their pep songs and yelling. Without them, pep assemblies and football games would have been pretty dull.

Bluejay marching Band received a I rating at State Marching Band Contest this year.

Villisca High School Concert Band attended State Contest at Lomoni and also received a I rating.

The Stage Band participated in Creston's Stage Band Contest and took first place trophy in Class B. The band's efforts for the entire year have been very successful.



BLUEJAY MARCHING BAND

37: Music Band ConcertBand StageBand BandCouncil Peterson,Ed Peterson,Neal Sunderman,Betty Gillespie,Sherry Gourley,Denise Scott,Kathy Dickey,Kinney Pollock,Tom Frey,Lyle Muller,Jack Bashaw,Joel Honeyman,Doug Brownlee,Stan Johnson,Marcia Shipley,Tom Anderson,Kenneth Lyle,Beth Bangston,Martha Sudik,Gaylin Simpson,Roger Darnold,Doug Brown,Charm Knoke,Pat Johnson,Brenda



CONCERT BAND



STAGE BAND—FRONT ROW: Ed Peterson, Neal Peterson, Betty Sunderman, Sherry Gillespie, Denise Gourley, Kathy Scott, and Kinney Dickey. SECOND ROW: Tom Pollock, Lyle Frey, Jack Muller, Joel Bashaw, Doug Honeyman, and Stanley Brownlee. BACK ROW: Marcia Johnson, Tom Shipley, Ken Anderson, Beth Lyle, and Martha Bangston.



BAND COUNCIL: Gaylin Sudik, Director; Roger Simpson, Freshman Rep., Doug Darnold, Drum Major; Ed Peterson, President; Charm Brown, Junior Rep., Pat Knoke, Sophomore Rep.; Brenda Johnson, Senior Rep.

Choir



The VHS choir this year consisted of 33 members. Their concerts included one at Christmas time, a spring concert and the Honors Concert. Highlight for the entire year was the Musical Review in November.



CHORUS COUNCIL: Marcia Johnson, Howard Stephens, Roy Taylor, Ed Johnson, Sandy Roberts, Alice Griffith, Pat McConnell, Marse Greenfield, Sandy McClelland.



Sandy McClelland received the Outstanding Musician Award for 1969.

Glee



The Girls Glee received a I at State Large Group Contest in Lamoni in the spring. The Mixed Chorus rated a II. Small Groups for the vocal department attended Small Group Contest at Corning with the girls' trio, Pat Anderson's piano solo, and Kathy Focht's solo receiving I's.



Mr. Feldman at Creston Little All-State.



GLEE COUNCIL: Ann Maxell, Sheryl Kerr, Nancy McCoy, Martha Bangston, Pat Anderson, Marse Greenfield, Chris Hausen.

Y-Teens



Freshman Initiation



Kiddie Party

41: Y-Teens Y-Teens,Queen,Candidates English,Pam Knoke,Judy Long,Lorna Dunn,Shelley McClelland,Sandy Brown,Charm Knoke,Pat Bangston,Martha Focht,Kathy Bradley,Pat Gunderman,Debbie Bangston,Pam Perrin,Linda O'Leary,Sharon Anderson,Pat McConnell,Pat Poore,Mary Geyer,Vicki Johnson,Brenda McConnell,Pat Bangston,Pam Greenfield,Marsha



FIRST ROW: Pam English, Judy Knoke, Lorna Long, Shelley Dunn, Sandy McClelland. SECOND ROW: Charm Brown, Pat Knoke, Martha Bangston, Kathy Focht, Pat Bradley, THIRD ROW: Debbie Gunderman, Pam Bangston, Linda Perrin, Sponsor Miss Sharon O'Leary. FOURTH ROW: Pat Anderson, Pat McConnell, Mary Poore, Vicki Geyer.



Candidates Brenda Johnson, Pat McConnell, Miss Y-Teen Pam Bangston, Marse Greenfield.



Twerp Dance



Beta Phi Rho

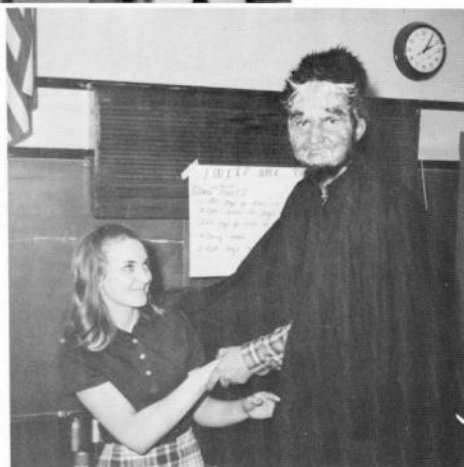
Pep Club



Council



Hey, she needs a pacifier!!



Friendly persuasion.



Drama awards.

44: Publications Newspaper Volcano Annual Bluejay Fengel, Gale Peterson, Peggy Griffith, Alice Gourley, Denise Smith, Jeri Johnson, Marcia Gillespie, Sherry Marckmann, Diana Strain, Jeanne Barker, Paul Hausen, Chris Bangston, Merri Dickey, Kinney Perrin, Linda Strickland, Melody Bangston, Pam Tinkham, March

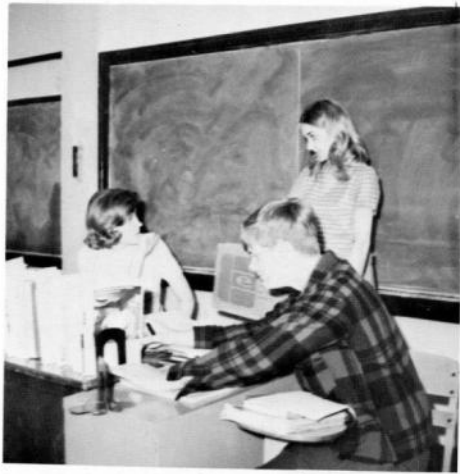
Publications



BACK ROW: Gale Fengel, Peg Peterson, Alice Griffith, Denise Gourley, Jerri Smith, Marcia Johnson, Sherry Gillespie, Deed Marckman, Jeanne Strain. FRONT ROW: Mr. Barker, Annual Staff sponsor, Chris Hausen, Merri Bangston, Kinney Dickey, Linda Perrin, Volcano editor, Melody Strickland Volcano editor, Pam Bangston, Annual Staff editor, Miss Tinkham, Volcano Staff sponsor.



Some of our hard-working members.



1969 Blue Jay



Volcano



46: FCA Peterson, Neal Darnold, Denny Frey, Lyle Marsh, Larry Nash, Randy Getting, Rod Means, Tom Boggess, Dick Dunn, Stan Muller, Jack Boggess, Bill Comstock, Phil Robinson, Larry Graham, Bob Fengel, Gale Griffin, Jeff Dunn, Dirk Bloom, Randy Weaver, Norman

F.C.A.



BACK ROW: Neal Peterson, Denny Darnold, Lyle Frey, Larry Marsh, Randy Nash, Rod Getting. SECOND ROW: Tom Means, Dick Boggess, Stan Dunn, Jack Muller, Bill Boggess, sponsor; Mr. Comstock. FRONT ROW: Larry Robinson, Bob Graham, Gale Fengel, Jeff Griffin, Dirk Dunn, Randy Bloom.



FCA OFFICERS—FRONT ROW
Dirk Dunn, Vice-Pres.; Randy
Bloom, treasurer. BACK ROW:
Jeff Griffin, Pres.; Mr. Comstock,
sponsor. NOT PICTURED: Norm
Weaver, bulletin board manager.

47: ScienceClub MathClub O'Rourke,Rick Sprague,Rick Peterson,George Marsh,Tom Harper,Bob Ward,Kurt Pollock,Tom Simpson,Roger Honeyman,Doug Lovig,Linda Gourley,Rita Core,Joan Rusk,Jim Muller,Jack Schafer,Marty Beckett,Greg Peterson,Neal Figgins,Felicia McClelland,Joni Core,Jane Ward,Jan Scott,Kathy Quinn,Kathy Bangston,Martha Jacobs,Peggy Chaney,Wayne Saikaly,Elie Carlson,Danny Long,Karen Boggess,Elaine Lehmkuhl,Laurie Boggess,Mary Thompson,Beverly Beedle,Sharon Boggess,Ed White,Howard Fast,Doug Jackson,Randy Frey,Lyle Anderson,Kenneth Bashaw,Joel Scott,Bill Williams,Stuart Pollock,Tom Simpson,Roger Frey,Cheryl Fast,Debbie Means,John Fengel,Gale

Science and Math



BACK ROW: Rick O'Rourke, Rick Sprague, George Paterson, Tom Marsh, Bob Harper, Kurt Ward, Tom Pollock, Roger Simpson, Doug Honeyman, Linda Lovig, Rita Gourley, Joan Core, Jim Rusk, Jack Muller, (historian). SECOND ROW: Marty Schafer, Greg Beckett, Neal Peterson, Felica Figgins, Joni McClelland, Jane Core, Jan Ward, Kathy Scott, Kathy Quinn, Martha Banston, Peg Jacobs, Wayne Chaney, (sponsor). FRONT ROW: Elie Saikaly, Danny Carlson, Karen Long, Elaine Boggess (sec.-treas.) Lauri Lehmkuhl, Mary Boggess, Beverly Thompson, Sharon Beedle, Ed Boggess, (president), Howard White, (vice-pres.).



BACK ROW: Doug Fast, (pres.), Randy Jackson, Lyle Frey, Ken Anderson, Joel Bashaw, FRONT ROW: Bill Scott, (sponsor), Stuart Williams, Tom Pollock, Roger Simpson, Cheryl Frey, Debbie Fast, (sec. treas.) John Means, (vice-pres.) NOT PICTURED Gale Fengel, NOT PICTURED.

48: SpanishClub Anderson,Pat Geyer,Carol Geyer,Vicki McClelland,Judy Hausen,Chris Schremser,Carol Peterson,Ed Ellison,Victor Simmons,Sandra Chaney,Wayne Chaney,WayneMrs.

Spanish Club



FRONT ROW: Pat Anderson, Carol Geyer, Vicki Geyer, Judy McClelland, and Chris Hausen. BACK ROW: Carol Schremser, Ed Peterson, and Mr. Ellison.



Chris and Mr. and Mrs. Chaney at the annual Spanish Banquet.



OFFICERS: Pat Anderson, President; Vicki Geyer, Secretary; and Sandy Simmons, Treasurer.



OFFICERS: Gloria Buckneberg, V.-Pres.; Pam Bangston, Treas.; Sandy Simmons, Sec.; and Sheri Scanlan, Pres.

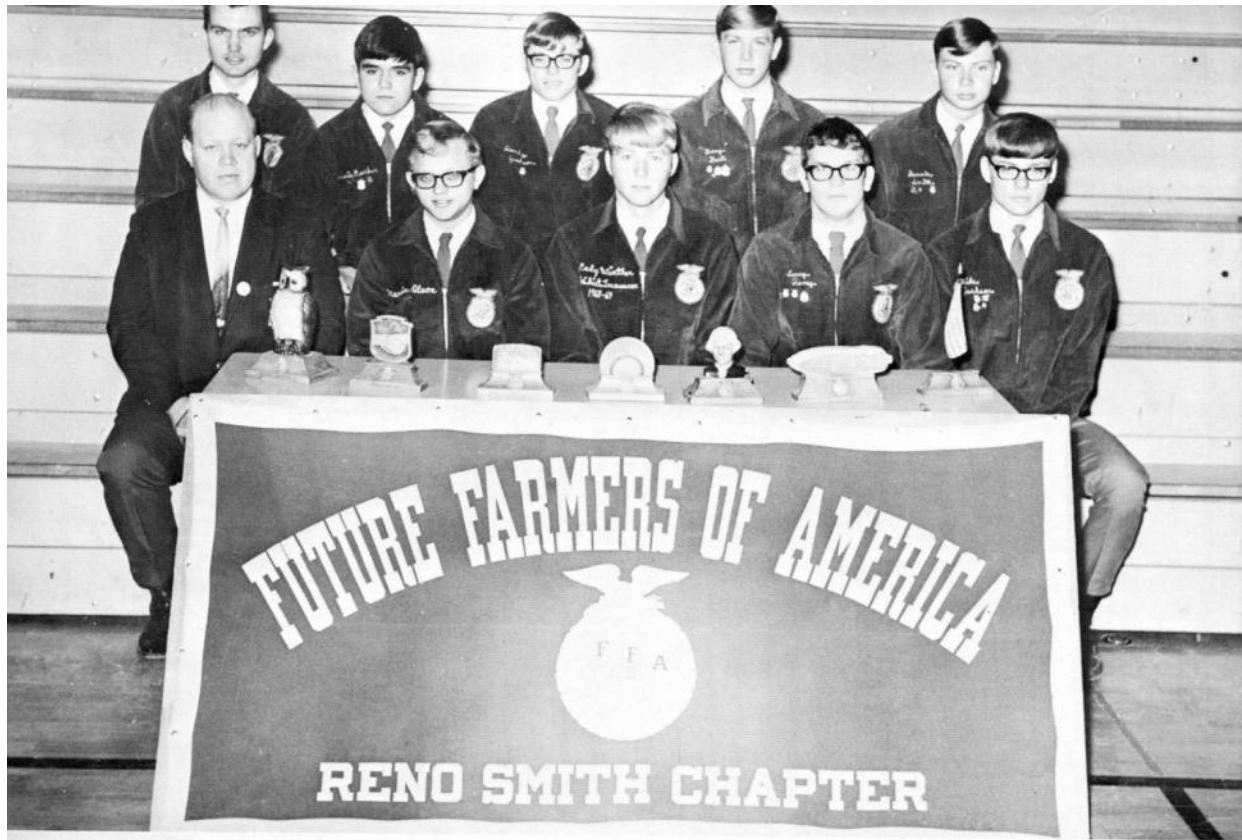


Librarians at work. (?)

Librarians Club



50: FFA Spencer, Dale Olson, Marlin Winther, R. Cody Raney, Larry Jackson, Mike Peterson, Steve Rucker, Dennis Jackson, Randy Fast, Doug Smith, Dennis McConnell, Dennis Beedle, Doug Kernan, Steve Hunter, Michael Stephens, Howard Frey, Lyle Skahill, Mike



FIRST ROW: Dale Spencer, Advisor; Marlin Olson, Vice-President; Cody Winther, President; Larry Raney, Secretary; Mike Jackson, Reporter. SECOND ROW: Steve Peterson, Parliamentarian; Dennis Rucker, Sentinel; Randy Jackson, Sentinel; Doug Fast, Treasurer; Dennis Smith, Reporter.



Dekalb awards went to Dennis McConnell, Doug Beedle, Steve Kernan and Michael Hunter. NOT PICTURED: Howard Stephens, Larry Raney, Randy Jackson, Mike Jackson, Cody Winther, and Lyle Frey.



Mike Skahill, Doug Fast, Larry Raney display exhibit at State Convention in Des Moines.

F.F.A.



Ron Bradley—1968 Villisca graduate was this years State Secretary.



1968-69 FTA members

52: LettermansClub Shearer,Rick Maxell,Ann Dukes,Bunny Gray,Janice Means,Colleen Baker,JohnL. Dunn,Dirk Frey,Lyle Grasmick,Jake Stalder,David Rhamy,Gary Johnson,Ed Fengel,Gale Raney,Larry Peterson,Ed Griffin,Jeff Boggess,Bill Fast,Doug Comstock,Phil Means,Nancy Harris,Lynn Erickson,Bev Boggess,Ed Rusk,Jim Marsh,Larry Bloom,Randy Getting,Rod Muller,Jack Anderson,Kenneth Kerr,Sheryl Knoke,Pat Skahill,Susan McAlpin,Jon O'Rourke,Rick Dunn,Stan Wolfe,Lynn Ward,Jan Scott,Kathy Wilson,Norma Scanlan,Sheri Frey,Cheryl Buckneberg,Gloria Means,Lois Kraft,Roger Wagner,Bill

Lettermans Club



FIRST ROW: Ricky Shearer, Ann Maxwell, Bunny Dukes, Janice Gray, Colleen Means, sec-treas., John Baker Pres., Dirk Dunn, vice-pres., Lyle Frey, Mr. Grasmick. SECOND ROW: Dave Stalder, Gary Rhamy, Ed Johnson, Gale Fengel, Larry Reney, Ed Peterson, Jeff Griffin, Bill Boggess, Doug Fast, Mr. Comstock. THIRD ROW: Nancy Means, Lynn Harris, Bev Erickson, Ed Boggess, Jim Rusk, Larry Marsh, Randy Bloom, Rod Getting, Jack Muller, Ken Anderson. FOURTH ROW: Cheryl Kerr, Pat Knoke, Susan Skahill, Jon McAlpin, Rick O'Rourke, Stan Dunn, Lynn Wolfe. FIFTH ROW: Jan Ward, Kathy Scott, Norma Wilson, Sheri Scanlon, Cheryl Frey, Gloria Buckneberg, Lois Means, Roger Kraft, Bill Wagner.



Sponsors—Mr. Comstock and Mr. Grasmick, Vice-President Dirk Dunn, Secretary-Treasurer Colleen Means, President John Baker.

53: Secretaries Office Secretaries Kerr, Sheryl Sunderman, Betty Strain, Jeanette Means, Lois Brown, Vicky Means, Nancy Grasmick, Loruss Lyle, LouAnn Fast, Debbie McConnell, Pat Wright, Peggy McCoy, Nancy Greenfield, Marsha Twigg, Sue Kerr, Sheryl Garey, Sandy Quinn, Kathy English, Pam Sprague, Carol Lyle, LouAnn Frey, Cheryl Buckneberg, Gloria Greenfield, Carol Means, Linda



Mr. Grasmick's secretaries—Cheryl Kerr and Betty Sunderman.



Mr. Spenser's secretaries—Jeannette Strain, Lois Means, Vicky Brown, and Nancy Means.

Office Secretaries



Superintendent's secretaries—Mrs. Grasmick, LuAnne Lyle, Deb Fast, Pat McConnell, Peg Wright, Nancy McCoy, Marce Greenfield, Sue Twigg, and Cheryl Kerr.



Principal's secretaries—Sandy Garey, Kathy Quinn, Pam English, Carol Sprague, LuAnne Lyle, Cheryl Frey, Gloria Buckneberg, Mrs. Greenfield, and Linda Means.

Cheerleaders



Pam Bangston



Jeanne Strain



Gloria Buckneberg



Pat McConnell



Betty Sunderman



Debbie Gunderman



Kinney Dickey



Marse Greenfield

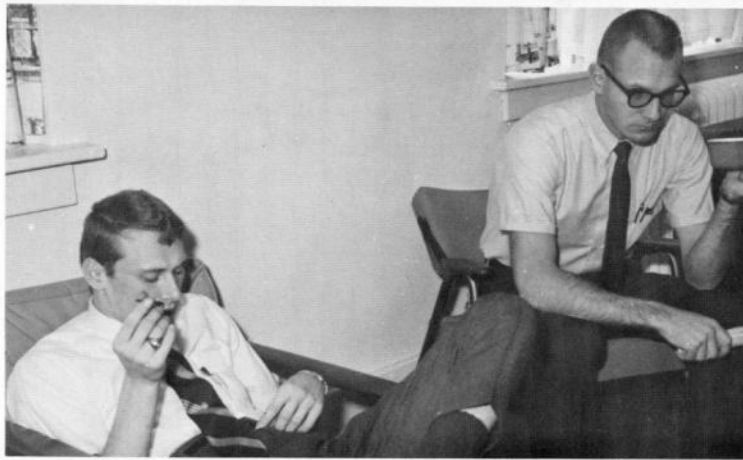


JUNIOR VARSITY: Ann Maxell, Debby Fast, Kathy Focht, Jeanette Strain, Nancy Means.





Hmmm . . . The whole place to myself.



What's this, Mr. Sudik?



What these students need is better posture!



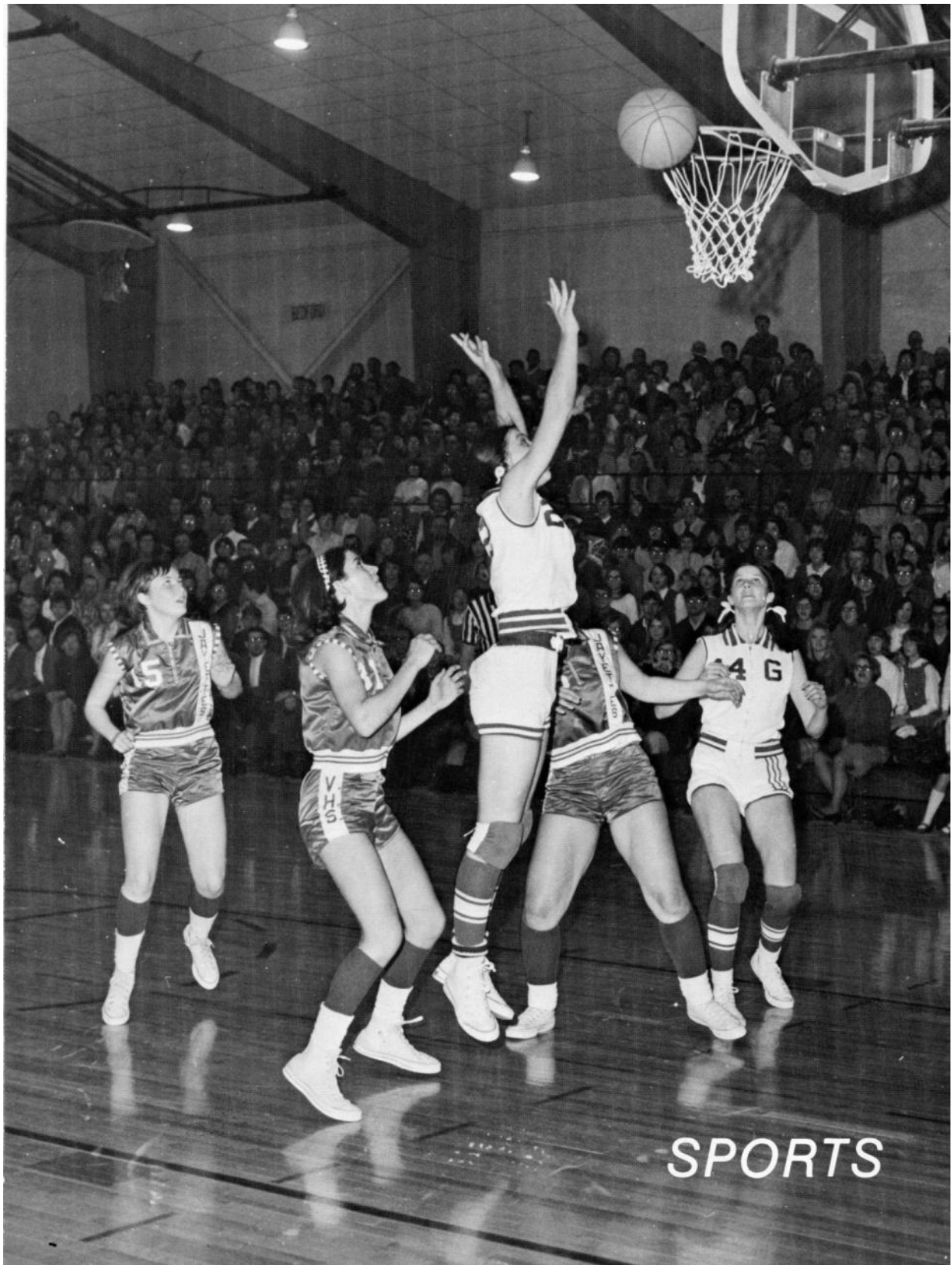
I wonder if this will make it taste any better.



But I was thirsty!



Those two just don't appreciate good geometry.

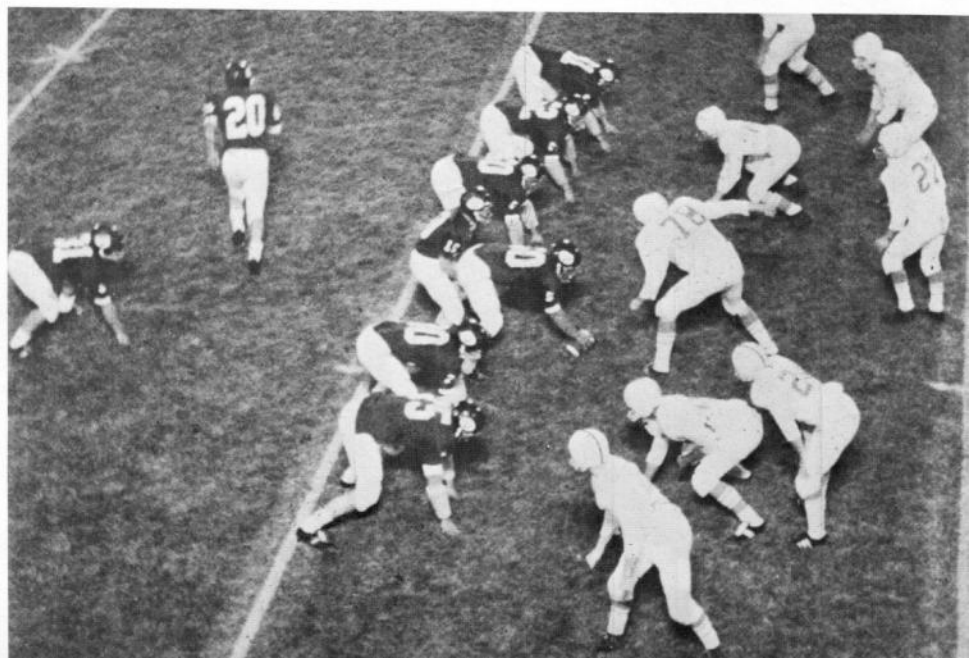




"You can't put OUR
boys down!"

Football Season 1968

Active Seniors 1969



"Hit him back Lar-
ry!!"



Randy Bloom
Guard



Ed Boggess
Guard



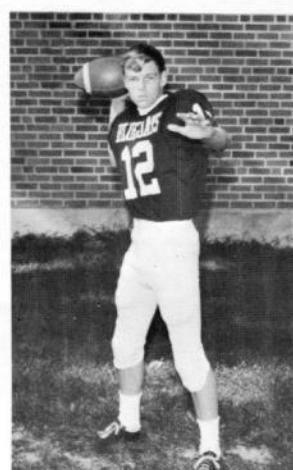
Gary Rhamy
Tackle



Jim Rusk
End



Ed Peterson
Tackle



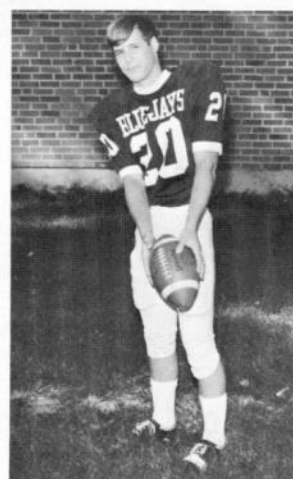
Curtis Blank
Quarterback



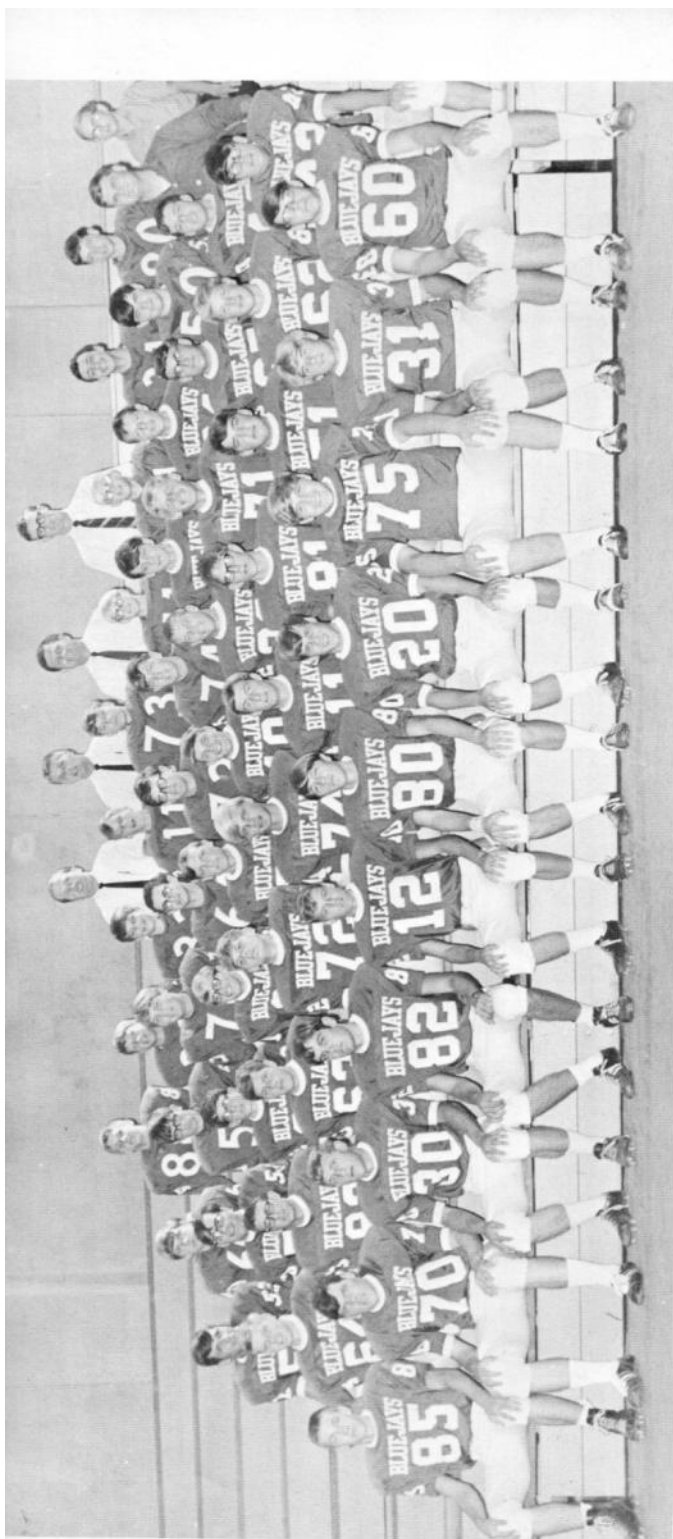
Jeff Griffin
End



Steve Lyle
Back



John Baker
Back



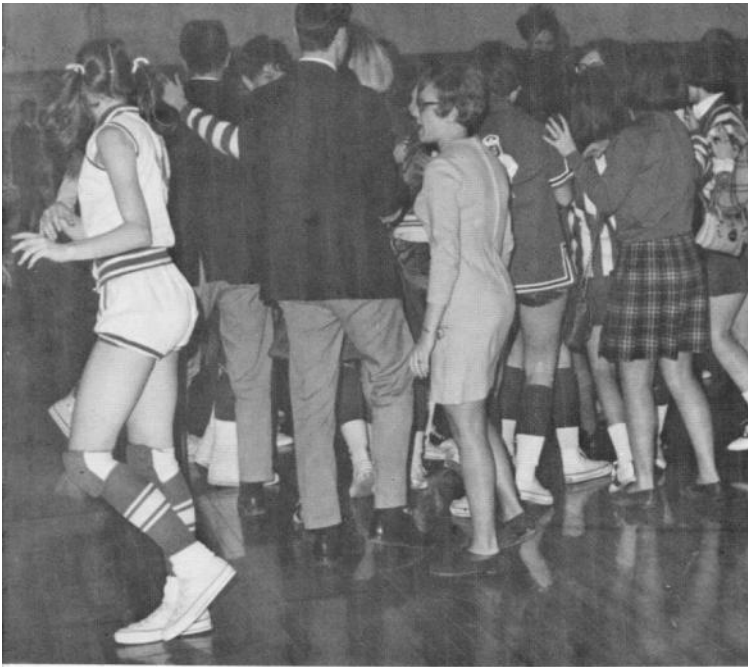
VHS finished the 1968 Bluejay season with a record of four wins, two losses, and two ties. Unfortunately, four forfeited defeats reduced our record to one victory, six losses, and one tie.

Selected to all conference team were: "Offense", Tackles—Gary Rhamy and Ed Peterson; Fullback—Dirk Dunn. "Defense", Linebacker—Randy Bloom; End—Gary Rhamy; Tackle—Ed Peterson; Halfback—Jeff Griffin.

SEASON RECORD

	Opp.	VHS
Corning	0	25
East Union	7	27
Bedford	13	13
Mt. Ayr	0	13
Lenos	7	7
Greenfield	0	3
Clarinda	53	6
Avo Ha	34	0





They're giving away free WHAT?



I hate to be anchorman.



I thought YOU timed fourth place!

Coaches



This is our future coach??



And then did you hear the one about the .



10-9-8-7-6-5-FORE

62: Basketball, Girls Bangston, Martha Harris, Lynn Erickson, Bev Means, Lois Means, Colleen Scanlan, Sheri Schremser, Carol Kerr, Connie Gourley, Kathy Haley, Karen Smith, Jeri Scott, Kathy Means, Linda Lyle, Beth Lehmkuhl, Laurie Long, Karen Wilhelm, Judy Harris, Lana Scott, Bill Johnson, Marcia Skahill, Susan Wright, Peggy Gourley, Debbie Gray, Terri Gray, Janice Smith, Jackie McCoy, Nancy Knoke, Pat Fengel, Michele Lane, Susan Dunn, Shelley Bangston, Brenda

Varsity



Coach Johnson, Martha Bangston, Lynn Harris, Bev Erickson, Lois Means, Colleen Means, Sheri Scanlon, Carol Schremser, Connie Kerr, Kathy Gourley, Karen Haley, Jeri Smith, Kathy Scott, Manager Linda Means.

Record—17-7
Third Place Tie in Conference
Jayette Invitational Championship

Third Place in Sectional
Second Place in District
Among Top 32 Teams in State

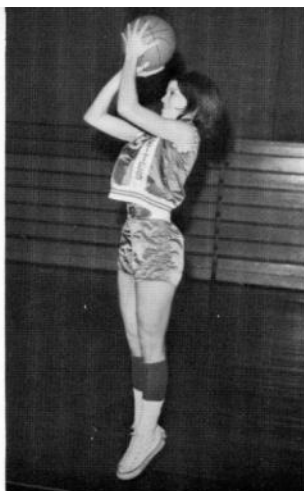
Jr. Varsity



TOP ROW: Beth Lyle, Laurie Lehmkuhl, Karen Long, Judy Wilhelm, Lana Harris, Coach Scott, Manager Marcia Johnson, Susan Skahill, Peggy Wright, Debbie Gourley, Teri Gray. BOTTOM ROW: Jan Gray, Jackie Smith, Nancy McCoy, Pat Knoke, Michelle Fengel, Susie Lane, Shelley Dunn, Brenda Bangston.



Colleen Means
Senior Forward



Lois Means
Senior Forward



Kathy Scott
Sophomore Forward



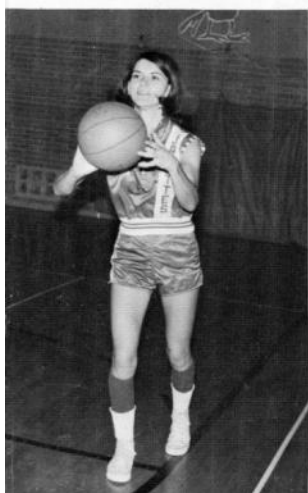
Karen Haley
Sophomore Forward



Jeri Smith
Junior Forward



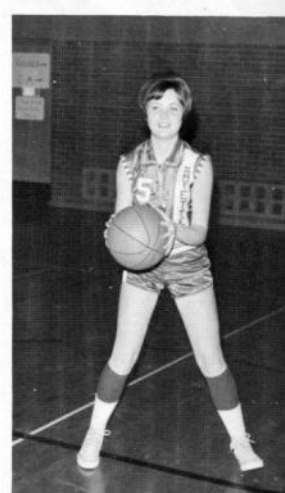
Bev Erickson
Senior Guard



Sheri Scanlon
Senior Guard



Martha Bangston
Sophomore Guard



64: Basketball, Boys Grasmick, Jake Boggess, Bill Griffin, Jeff Stephens, Howard Anderson, Kenneth Peterman, Stan Reents, Jim Fengel, Gale Dunn, Stan Rhamy, Gary Fast, Denny Dunn, Dirk Wolfe, Lynn Muller, Jack



Coach Grasmick, Bill Boggess, Jeff Griffen, Howard Stephens, Kenneth Anderson, Stan Peterman, Jim Reents, Gale Fengel, Stan Dunn, Gary Rhamy, Denny Fast, Dirk Dunn, Lynn Wolfe, Jack Muller (manager).

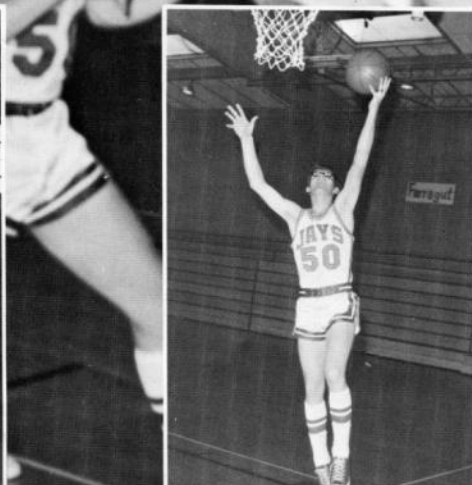
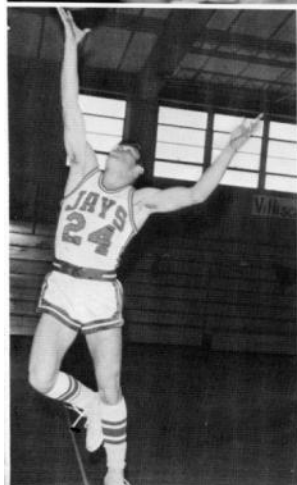
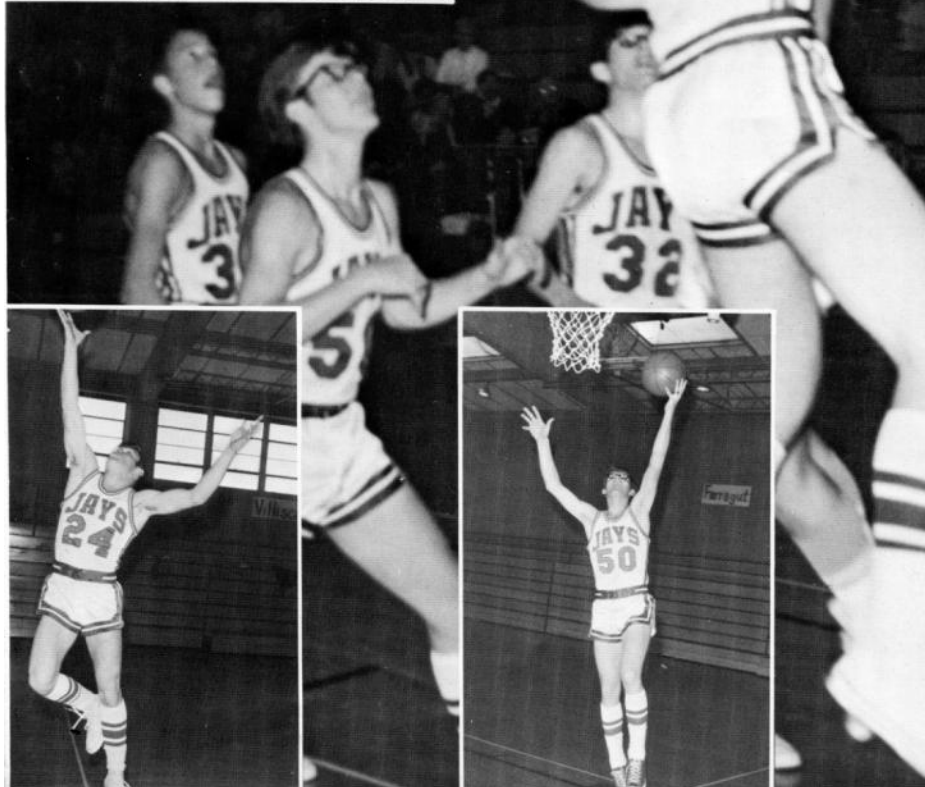
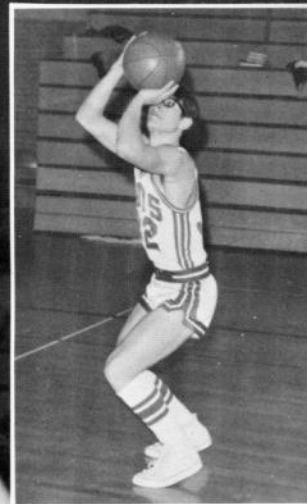
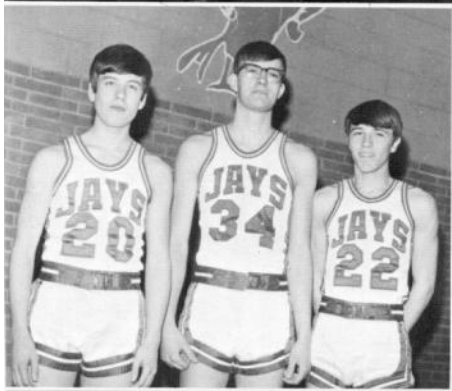
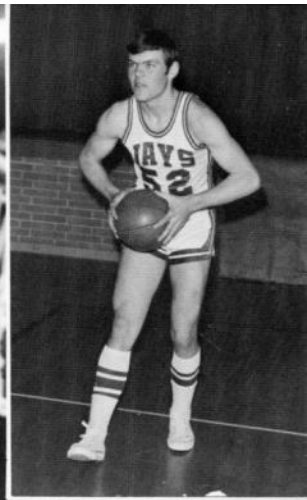
Boy's Basketball

The 1968-69 VHS Varsity Boys Basketball Team had one returning letterman, Gary Rhamy, and was joined by Denny Fast, who transferred to Villisca in time for most of the season.

This season's record was five wins and thirteen losses. High scorer for the year was Stan Dunn, with 252 total points.

By the end of the season ten more boys had lettered. They were, Stan Dunn, Dirk Dunn, Bill Boggess, Denny Fast, Stan Peterman, Kenny Anderson, Howard Stephens, Gale Fengel, Lynn Wolfe, and Jim Reents.



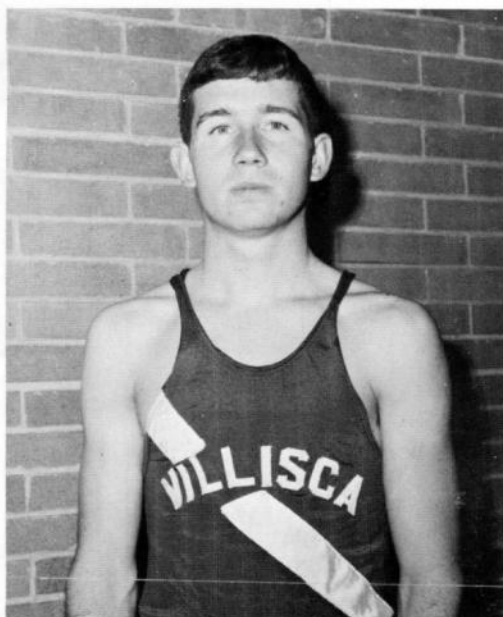


66: Track, Boys Comstock, Phil Russell, Steve Boggess, Dick Parker, Mark McAlpin, Jon Kraft, Roger Boggess, Ed Smith, Dwight McAlpin, David Peterson, Neal Beckett, Greg Doll, Galen Shearer, Rick Reents, Jim Fengel, Gale Lowe, Mike Dunn, Stan Russell, Jim Pollock, Tom O'Rourke, Rick Bloom, Randy Grasmick, Jake

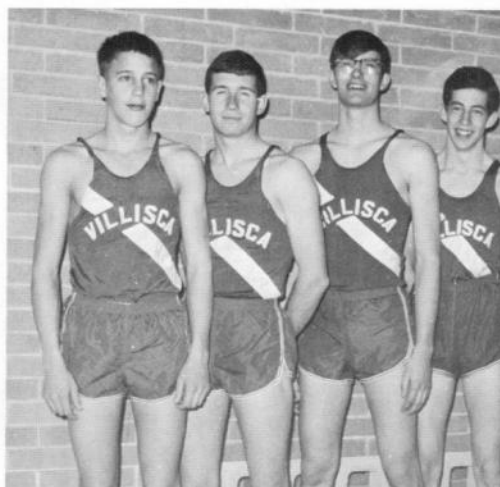
Track



FRONT ROW: Coach Comstock, Steve Russell, Dick Boggess, Mark Parker, Jon McAlpin, Roger Kraft, Ed Boggess, Dwight Smith, Dave McAlpin, Neal Peterson, and Manager Greg Beckett. BACK ROW: Manager Galen Doll, Rick Shearer, Jim Reents, Gale Fengel, Mike Lowe, Stan Dunn, Jim Russell, Tom Pollock, Rick O'Rourke, Randy Bloom, and Coach Grasmick.



Rick O'Rourke—Two Mile State Cross Country Champion and State Two Mile Track Champion. Rick was undefeated in the two mile run this year.



Ken Anderson, Rick O'Rourke, Jim Reents, Rick McAlpin, and Coach Barker.



Shearer, Jon



Gale Fengel—two mile relay team.

68: Track, Girls Softball Bangston, Martha Scott, Kathy Wright, Peggy Smith, Jackie Haley, Karen Boggess, Mary Ward, Jan Fengel, Michele Harris, Lana Means, Nancy Skahill, Susan Scanlan, Sheri Means, Colleen Smith, Jeri Long, Karen

Girls' Track and Softball



FRONT ROW: Martha Bangston, Kathy Scott, Peggy Wright, Jackie Smith, Karen Haley, Mary Boggess, Jan Ward. BACK ROW: Michelle Fengel, Lana Harris, Nancy Means, Susan Skahill, Sheri Scanlon, Colleen Means, Jeri Smith, Karen Long.



1969 Softball Team



Girls in action???

Boys' and Girls' Golf



Hey guys! Where'd my ball go?



Quit puttering around, Wolfe, and putt it in!



Four what??

70: Baseball Rusk, Jim Rhamy, Gary Fast, Denny Dunn, Dirk Boggess, Bill Darnold, Denny Anderson, Kenneth Dunn, Stan Peterman, Stan Smith, Keith Courcier, Jim Blank, Curtis Gray, Lee Reents, Jim Schafer, Marty Peterson, Neal Graham, Bob Smith, Dwight Eno, Mark Williams, Stuart Boggess, Dick Skahill, Mark

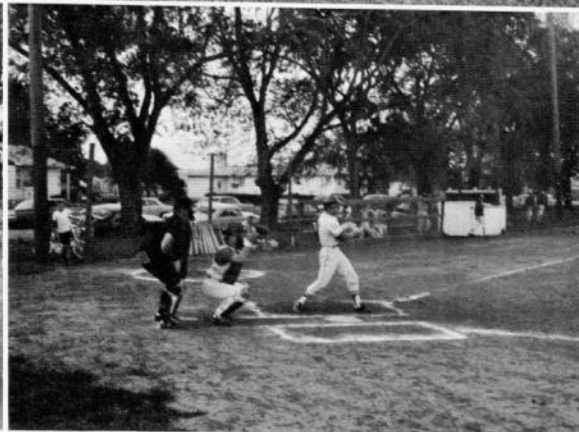
Baseball



FRONT ROW: Jim Rusk, Gary Rhamy, Denny Fast, Dirk Dunn, Bill Boggess, Denny Darnold, Ken-ny Anderson. BACK ROW: Stan Dunn, Stan Pe-terman, Keith Smith, Jim Coucier, Curtis Blank, Lee Pat Gray, Jim Reents.

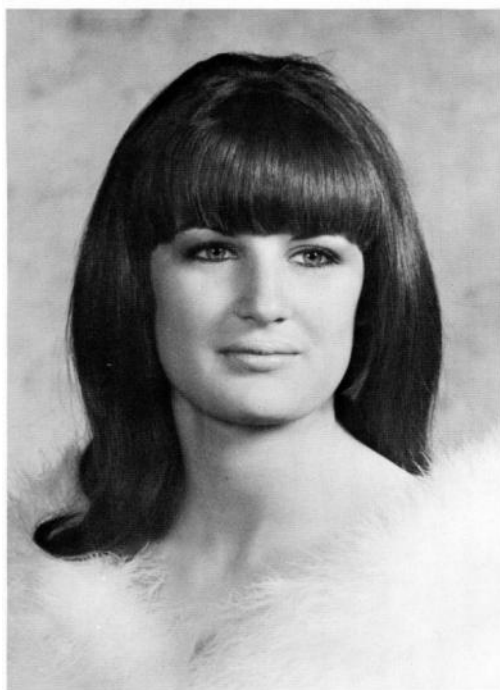


Marty Shaffer, Neal Peterson, Bob Graham, Dwight Smith, Mark Eno, Stuart Williams, Dick Boggess, Mark Skahill.









Jeanne Strain



Pam Bangston



Gloria Buckneberg



Lois Means



VHS Band

Home

6



Queen Candidates



Jeanne Strain, Lois Means



Crown bearer and flower girl



Cheerleaders

Coming

8



Senior Class Float



Queen Pat McConnell, Gloria Buckneberg, Pam Bangston.



Queen Candidates



Football Boys



Junior Class Float



*FFA Sweetheart
Lois Means*



Vicky Brown



Gloria Buckneberg



Linda Means

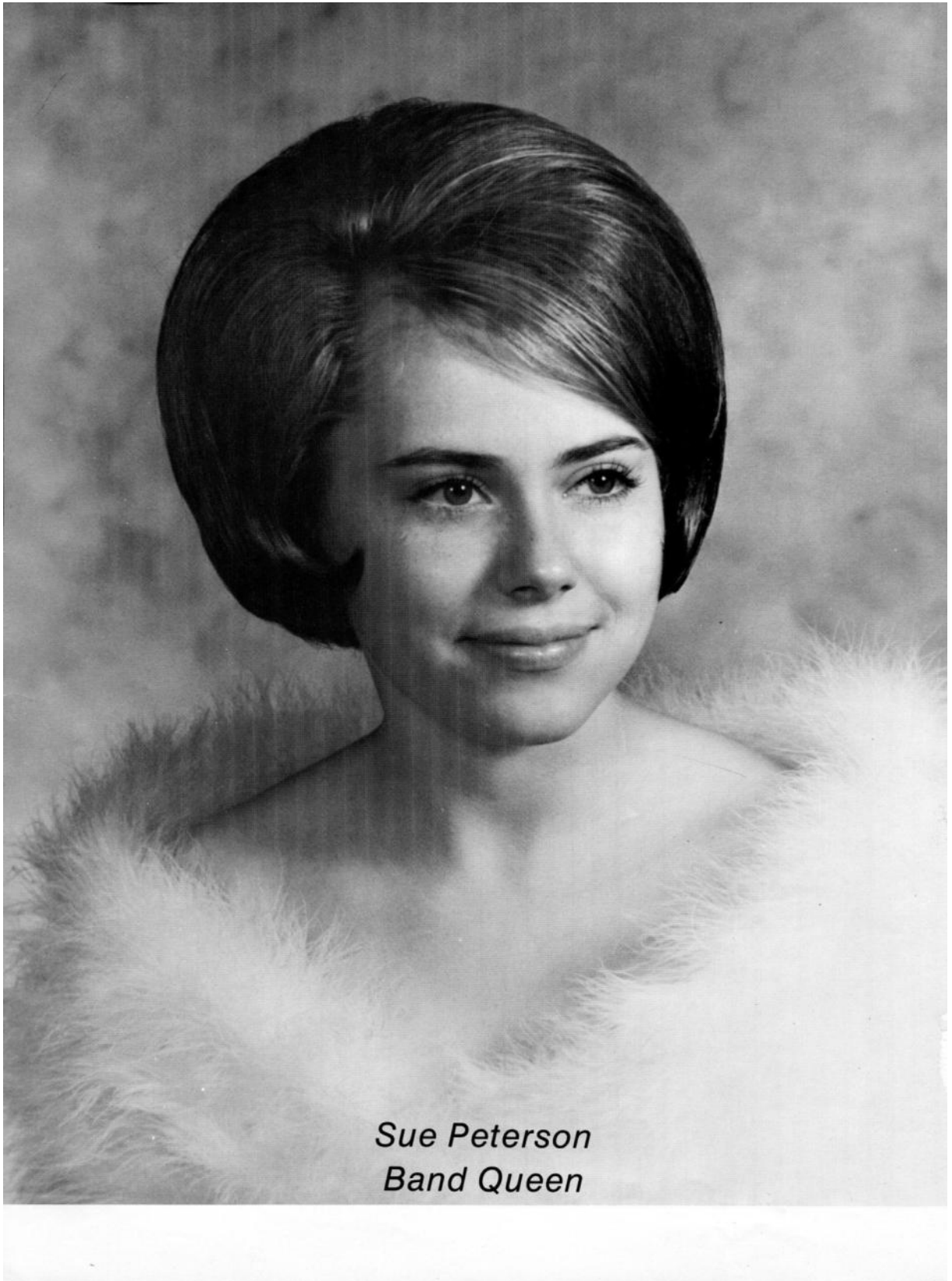


Diana Marckmann



Colleen Means
Track Queen







Pam Bangston, Senior



Bev Erickson, Senior



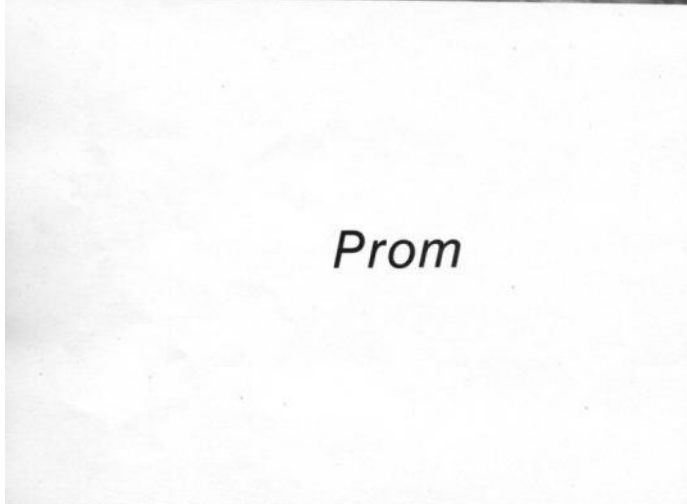
Linda Lovig, Junior



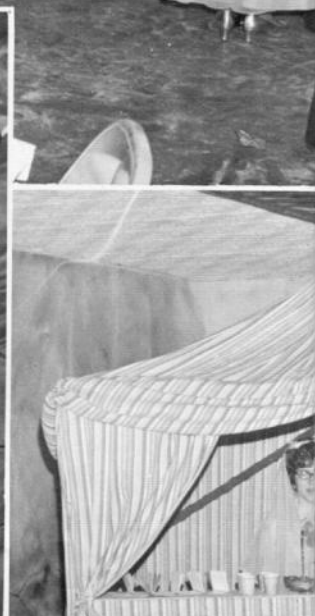
Sherry Gillespie, Junior



*Magic
Ride*



Prom



Carpet



1969



Awards



Miss O'Leary, Annual Dedication



Howard White, Sutphen Memorial Scholarship and Schoreder Scholarship



Thespian Awards



Outstanding Sportsmanship Awards, Randy Bloom and Kathy Gourley



Outstanding Bandsmen, Doug Darnold, Ed Peterson, and Doug Honeyman

Top Scholars



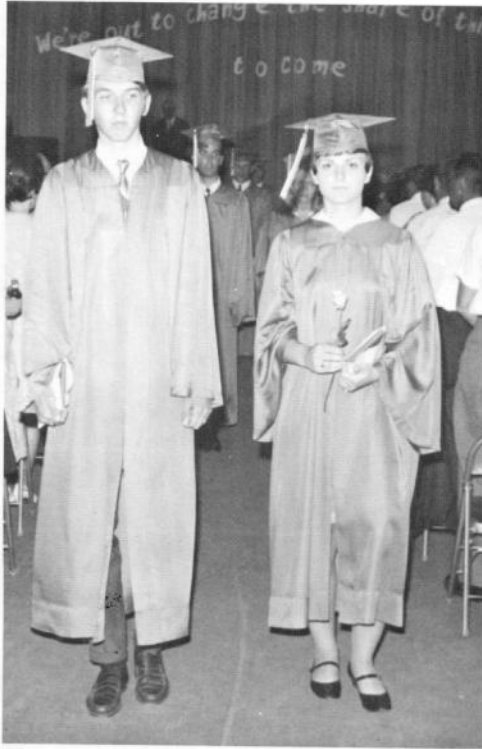
Ed Boggess, Sandy McClelland, Brenda Johnson, Mary Poore, Pat Anderson, Cheryl Frey, Colleen Means, Howard White.



James Rusk, Valedictorian



Ed Boggess, Salutatorian



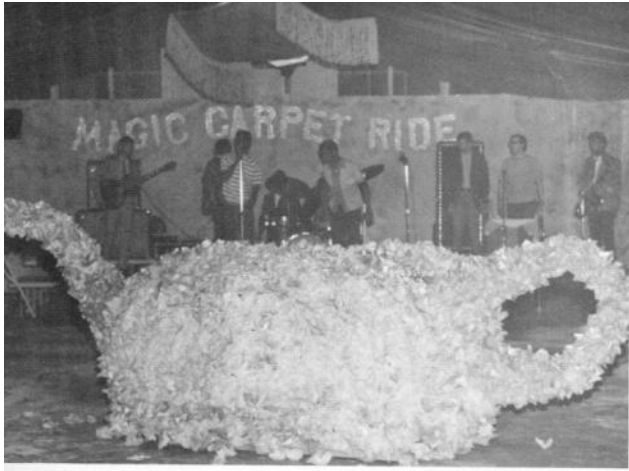
1969





Graduation

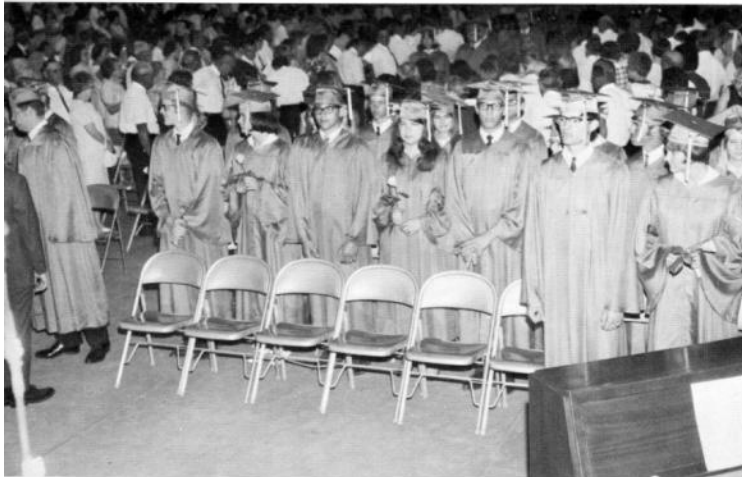




Prom '69



Pat McConnell



Graduation exercises

Mem

V.H.S. Students

Blue Jay
Marching
Band



reigns in '69.



BlueJay Grid Iron Squad

ories



Sue Peterson Band Queen

at work



National
Honor
Society





CO-OP Oil & Supply Assn.

Villisca, Iowa

phone: 712-761-5142

GIVE YOUR BUSINESS THE
BUSINESS-BUY CO-OP



Bryson-Franks Implement

Your Allis-Chalmers Dealer

Come See Our Line

ANDREWS CLOTHING
Villisca, Iowa

NEEDHAM'S GARAGE & BODY
SHOP
phone: 761-5233

FORSYTHE HATCHERY
Hy. 71, 761-5122

SHAVER'S POPCORN
Villisca, Ia. 761-4772

KARLE'S BAKERY
Villisca, Iowa

JIM'S BARBER SHOP
Villisca, Iowa

VILLISCA LAUNDROMAT
Villisca, Iowa

JERRY'S GROCERY
Nodaway, Iowa 761-7131

MARY LOU'S BEAUTY SHOP
Villisca 761-2512

NEAL REAL ESTATE AND
INSURANCE
Villisca, Iowa



PENWELL TRUCKING AND GRAIN
RFD 2 Villisca 761-4682

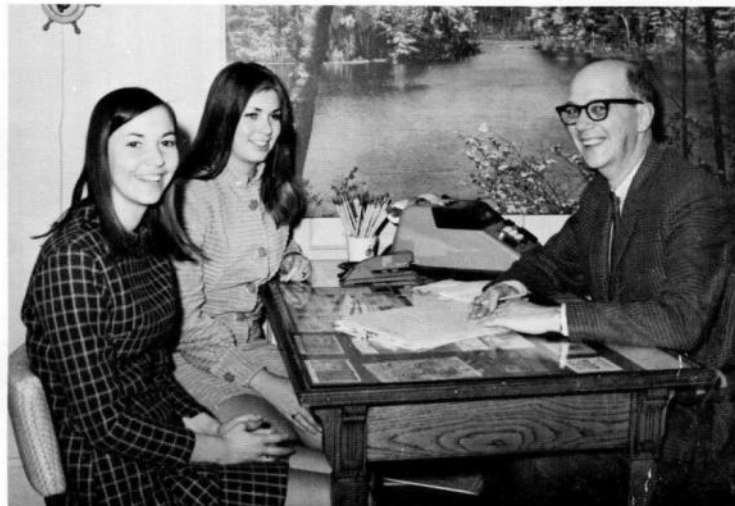


**THERE'S A LOT
GOING FOR YOU
IF YOU SHOP**

Hy-Vee



Gunderman Insurance Agency



Villisca, Iowa 50864
Our 38th Year of Service

CITY VARIETY

409 13 South 3rd Avenue
761-2455

ENO FURNITURE COMPANY

Villisca, Iowa
761-2102

RIALTO THEATRE

Ken and Ethel Oltmann
761-4122 Villisca, Iowa

SIERP OIL COMPANY

Highway 71
Villisca 761-3102



CLARK BROS. GARAGE

137 West 8th Street
Villisca, 761-3353

G & S PLUMBING, HEATING,
AND WIRING

761-5181 or 761-5085
Villisca, Iowa

J & R D-X SERVICE

Villisca, Iowa



GREEN LANTERN CAFE



Villisca, 761-5333

BOB'S SKELLY SERVICE



761-4242



BLUEJAY BARBER SHOP

On the Strip



NODAWAY SERVICE STATION

Oil, Tires, and Accessories
Nodaway, Iowa AAA Service
Bob Rhamy, 761-2221

MARSH CAFE



Steaks—Sandwiches—Seafoods
Villisca, Iowa 761-7426



Dear VHS,

This year's annual is finished as we come to the close of another school year.

The '69 Annual Staff would like to take this opportunity to thank the many people who have helped to make the yearbook possible.

The merchants of Villisca, Nodaway, Red Oak, Shenandoah, and Clarinda who have bought advertisements in order to help finance our needs.

Mr. Baxter and the faculty who put up with our interrupting classes so that we could take pictures.

Mr. Lynn Baldwin, of Stern Studios, who supplied us with many fine pictures.

Mr. Paul Barker, our sponsor, who kept us going when we were growing weary.

And to everyone else who helped to make the 1968-69 edition of the BlueJay possible.

We hope this book has captured some true highlights of Your Year 1969.

Sincerely,
The BlueJay Staff

